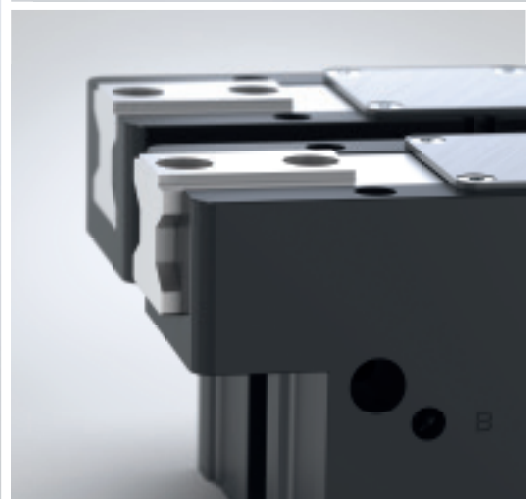
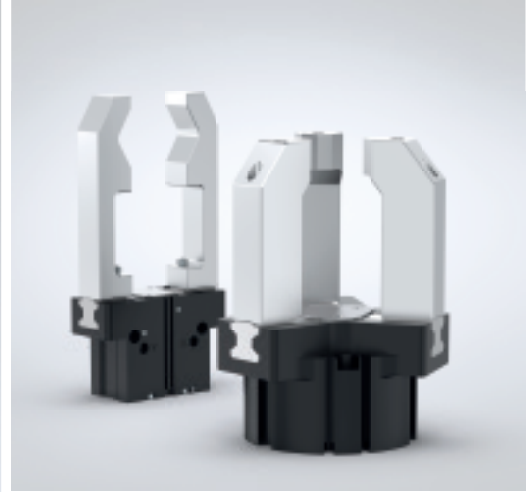




Universal grippers in a class of their own

Series GPP5000
Series GPD5000
Series GPP5000AL
Series GPD5000AL

THE KNOW-HOW FACTORY



PRODUCT COMPARISON

POWERFUL AND FUTURE-PROOF

TOP OF THE CLASS – SERIES 5000

The multiple award-winning premium pneumatic grippers of the 5000 product family feature an extremely rugged, hard-coated, steel-on-steel profile groove guide and can truly take on any role. They were designed for true universal use and have a number of features depending on the variant so that they offer the right solution for every application.

STEEL LINEAR GUIDE

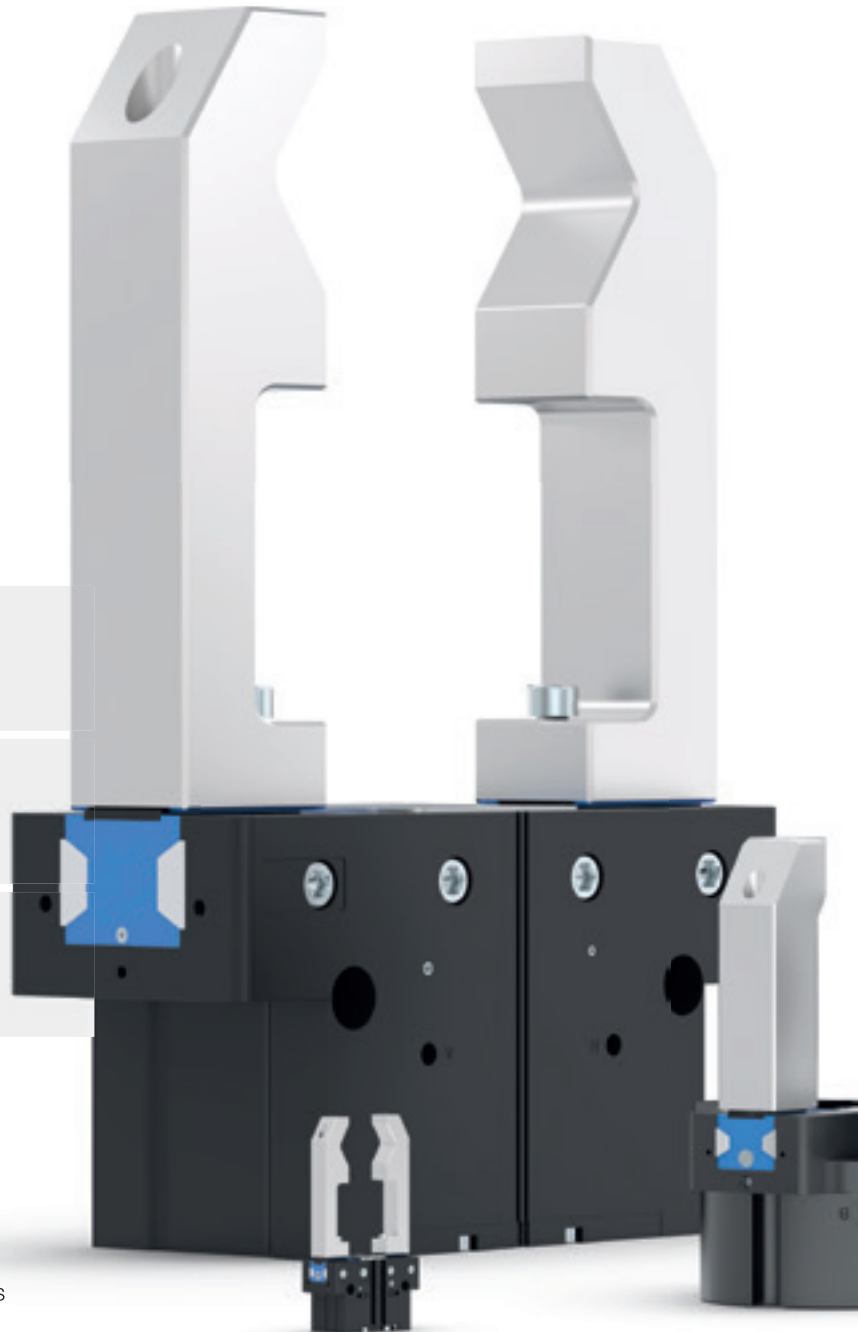
FOR ALL
OPERATING CONDITIONS

HIGHEST
FORCES

LARGEST
TORQUES

RANGE OF APPLICATIONS

- ▶ For moderately to highly contaminated environments
- ▶ Protection class IP64/67
- ▶ Clean room class 5/6
- ▶ S variant with higher gripping force
- ▶ Corrosion-protected
- ▶ Temperature-resistant



THE MONEY SAVERS – SERIES 5000AL

In the 5000 product family, the series equipped with Aluminum Linear Guide offer you maximum variety and flexibility at fair prices. Series GPP5000AL and GPD5000AL offer a combination of technological and economic advantages, helping you to achieve the best balance between performance and costs.



ALUMINUM LINEAR GUIDE

LONGER STROKE
SAME SIZE

HIGHEST
EFFICIENCY

LARGEST
FUNCTIONALITY

RANGE OF APPLICATIONS

- ▶ For clean to slightly dirty environments
- ▶ Protection class IP40
- ▶ Clean room class 4
- ▶ L variant with extended stroke



EFFICIENT ALL-ROUNDER

SERIES GPP5000AL AND GPD5000AL

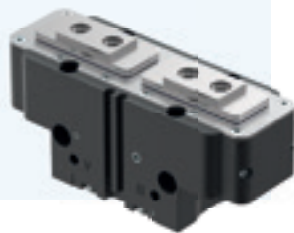
ADVANTAGES THAT MAKE THE DIFFERENCE

Series GPP5000AL and GPD5000AL combine high precision, robustness and maximum efficiency in a single platform concept. We are confident of our products, which is why we offer uncompromising "Made in Germany" quality for all your Series 5000 grippers. This means a full 24-month warranty – for all components and no matter how many cycles. That's a promise!



PROTECTOR VERSION OF THE SERIES 5000AL WITH HIGHER PROTECTION CLASS

If more protection is required, we can offer you a protector version for more demanding environments on request.



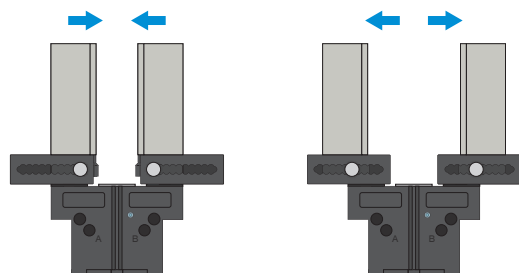
COMPLIANCE WITH STANDARDS AND GUIDELINES SET THE BENCHMARKS IN THIS CLASS

Quality and safety are fundamental elements of our corporate philosophy. Our regularly tested products not only meet the highest quality standards, but also guarantee long-term reliability and safety.

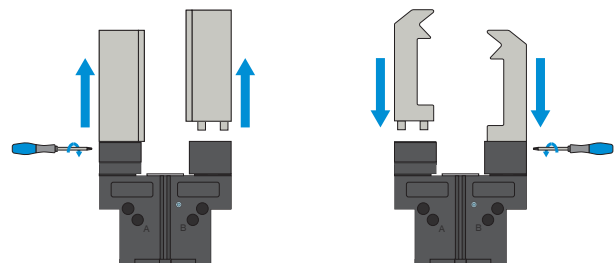


EXTENSIVE ACCESSORIES

Highlights include the adjustable jaws for tool-free adjustment of the gripping range, exchangeable jaws for quick jaw changes and a precise sensor system that reliably monitors the entire stroke range via IO-Link or an analog signal.



*Adjustment jaws – EB5000
For tool-free adaptation of the gripper range*



*Exchangeable jaws – WB5000
Enable fast change of individual gripper fingers*

PRODUCT COMPARISON

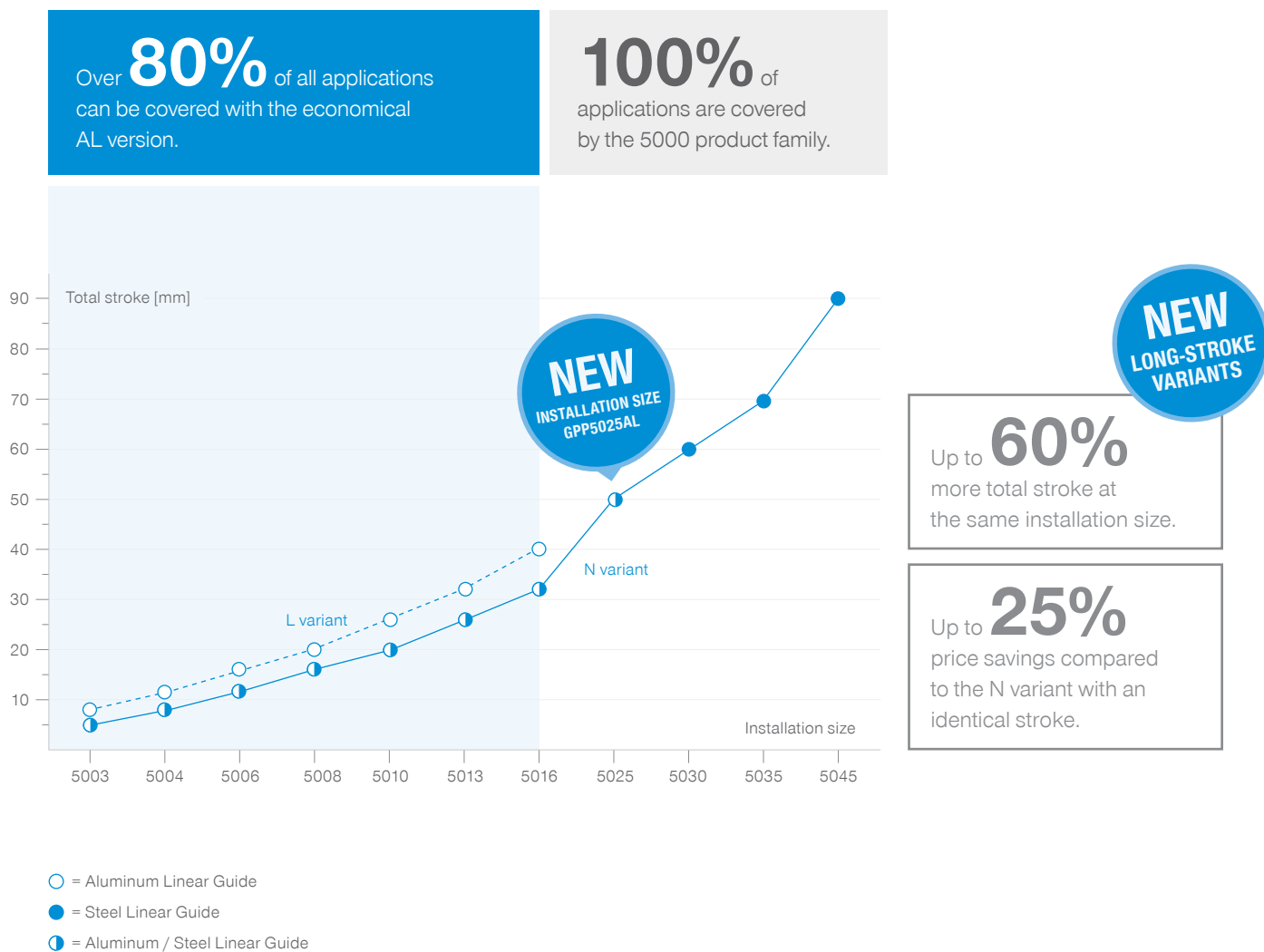
TECHNICAL DATA

STEEL LINEAR GUIDE OR ALUMINUM LINEAR GUIDE – PERFORMANCE AS REQUIRED

The GPP5000 with Steel Linear Guide are premium grippers with protection classes up to IP67, corrosion protection as standard, high temperature resistance and an extremely robust steel guide – ideal for the most demanding applications. The GPP5000AL with aluminum linear guide sets the industry standard: cost-optimized, focused on the essentials

and suitable for 80% of all applications. They also benefit from the superior Linear Guide technology.

Robust or efficient – both variants offer strong performance and precise guidance.



RETURN ON INVESTMENT

MAINTENANCE-FREE AND EFFICIENT

QUALITY AT AN ATTRACTIVE PRICE

With the Aluminum Linear Guide series of the 5000 gripper family, you achieve a very fast return on your investment. The combination of low acquisition costs, maintenance-free design and maximum process reliability permanently reduces operating costs and gives you a clear competitive advantage, both technologically and economically.

MORE INFORMATION

All info at a glance

For details on Series GPP5000AL and GPD5000AL, as well as other series in the 5000 product family, refer to our website.



STEEL LINEAR GUIDE

GPP5000, GPD5000

30 MILLION

CYCLES MAINTENANCE-FREE



ALUMINUM LINEAR GUIDE

GPP5000AL, GPD5000AL

15 MILLION

CYCLES MAINTENANCE-FREE



SERIES GPP5000AL

		► Technical data										
Installation size		5003	5004	5006	5008	5010	5013	5016	5025	5030	5035	5045
N variant	Stroke per jaw [mm]	2.5	4	6	8	10	13	16	25	-	-	-
	Gripping force [N]	205	295	485	750	1320	1920	2990	4710	-	-	-
L variant	Stroke per jaw [mm]	4	6	8	10	13	16	20	-	-	-	-
	Gripping force [N]	125	190	335	570	960	1645	2350	-	-	-	-

SERIES GPP5000

SERIES GPP5000

		► Technical data										
Installation size		5003	5004	5006	5008	5010	5013	5016	5025	5030	5035	5045
N variant	Stroke per jaw [mm]	2.5	4	6	8	10	13	16	25	30	35	45
	Gripping force [N]	215	295	485	750	1320	1920	2990	4710	7060	8200	14200
S variant	Stroke per jaw [mm]	-	2	3	4	5	6	8	14	17	20	26
	Gripping force [N]	-	630	1080	1670	2890	4400	6600	9130	13550	15900	26950

SERIES GPD5000AL

		► Technical data										
Installation size		5003	5004	5006	5008	5010	5013	5016	5025	5030	5035	5045
N variant	Stroke per jaw [mm]	2.5	4	6	8	10	13	16	-	-	-	-
	Gripping force [N]	465	690	1080	1770	3250	5200	9490	-	-	-	-

SERIES GPD5000

SERIES GPD5000

		► Technical data										
Installation size		5003	5004	5006	5008	5010	5013	5016	5025	5030	5035	5045
N variant	Stroke per jaw [mm]	2.5	4	6	8	10	13	16	25	30	35	45
	Gripping force [N]	465	690	1080	1770	3250	5200	9490	11860	16970	23800	37850
S variant	Stroke per jaw [mm]	-	2	3	4	5	6	8	14	17	20	26
	Gripping force [N]	-	1520	2320	3910	7160	11450	20330	22850	32400	45200	72500

WORLDWIDE SERVICE

RELIABLE, FAST AND COMPETENT

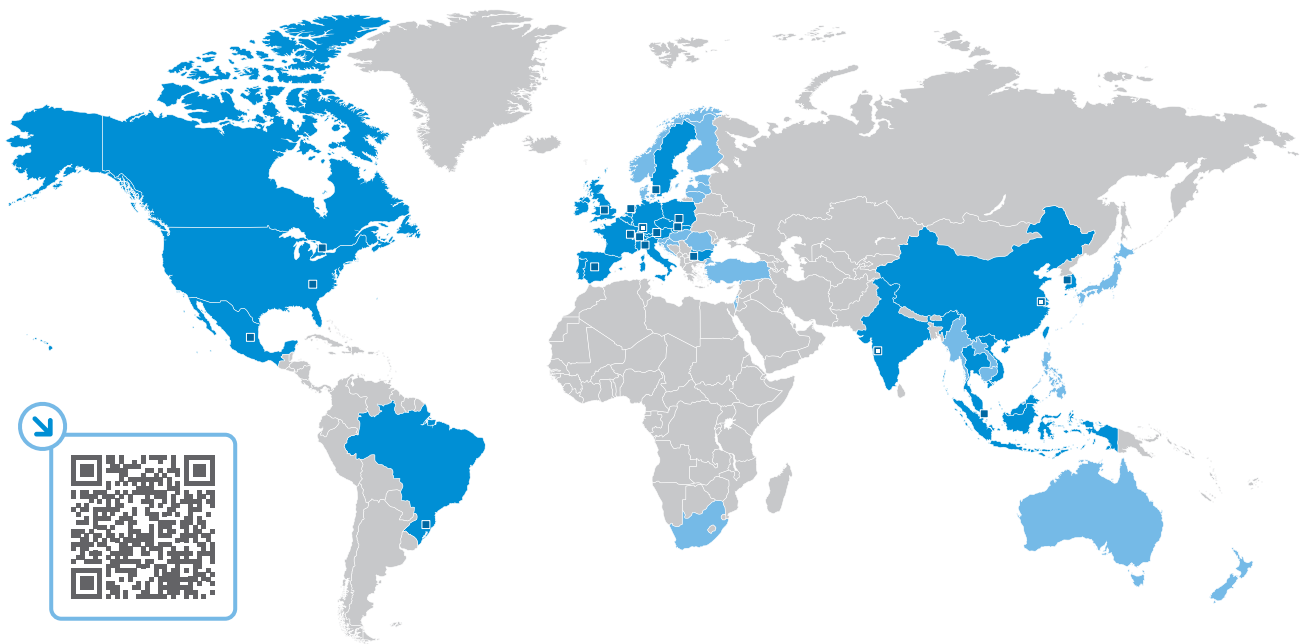
SERVICE THAT MAKES THE DIFFERENCE

Global network

With the Zimmer Group's international network, you get the benefit of direct local support worldwide. Consistent documentation and a well-designed range of accessories also ensure easy handling and maintenance.

Conversion & upgrades

If the operating conditions change, upgrading to Steel Linear Guide or IP-protected variants can be achieved with just a few minor adjustments – efficiently, flexibly and without a redesign. The wide range of accessories and installation sizes in the 5000 product family make this possible.



HOTLINE

- Your personal contact
- Support in the event of malfunctions, process errors, operating problems
- Error analysis via telephone, video or remote



FIELD SERVICE

- Mechanical & electrical installation
- Mechanical & electrical commissioning
- Production support for optimizations
- Maintenance, repair and inspection
- Troubleshooting



REPAIR SERVICE

- Repair of defective assemblies
- Repair and maintenance
- General overhaul



PRE-SALES

- Configurators and Product Finder
- Extensive documentation
- 3D models, technical drawings, exploded drawings with parts lists

ZIMMER GROUP – THE KNOW-HOW FACTORY

OUR KNOW-HOW FACTORY WORKS WITH ALL INDUSTRIES AND DELIVERS EVERYTHING FROM A SINGLE SOURCE. OUR PRODUCT RANGE IS FAR REACHING, BOTH IN ITS DEPTH AND ITS BREADTH.

DO YOU HAVE A DEVELOPMENT PROBLEM? WE'LL SOLVE IT! SET US A CHALLENGE IN RESEARCH AND DEVELOPMENT. COUNTLESS INNOVATIONS ORIGINATE FROM OUR COMPANY. WE ARE ENTHUSIASTIC ABOUT NEW PRODUCTS AND PRIDE OURSELVES ON OUR CORPORATE PIONEERING SPIRIT.

CONTACT – WORLDWIDE

With our current 19 global subsidiaries and partners in over 125 countries, we offer the excellent service of a technology leader. We look forward to hearing from you!

www.zimmer-group.com/en-us/contact



ZIMMER GROUP SYSTEM TECHNOLOGY – THE SPECIALISTS FOR CUSTOM SOLUTIONS

With over 30 years of development experience, the system technology develops special solutions for handling and automation.

www.zimmer-group.com/en-us/system-technology



HERE FOR YOU 24/7/365 – OUR VIRTUAL TRADE SHOW BOOTH

With impressive features such as an animated camera flight, clickable information hotspots and 3D models that can be rotated, we guarantee that you will be thrilled—virtually.

www.zimmer-group.com/en-us/expo



OUR NEW PRODUCTS

Zimmer Group is renowned as an innovator and for its pioneering spirit. Accordingly, each year we can offer new innovative and individual solutions. For current product highlights, refer to:

www.zimmer-group.com/en-us/innovations



HEADQUARTERS:

ZIMMER GROUP

Am Glockenloch 2
DE 77866 Rheinau
T +49 7844 9139-0
F +49 7844 9139-1199
info.de@zimmer-group.com
www.zimmer-group.com

