



Handling technology

Gripper series GH1000
+ 2-Jaw parallel gripper
with long stroke pneumatic

THE KNOW-HOW FACTORY

PRODUCT KEY EXPLANATION

SERIES GH **1** - **125** - **0** - **0** - **01**

Options

01 ...
02 ...
... ..

Synchronisation

0 without synchronisation
1 with synchronisation

Clamping

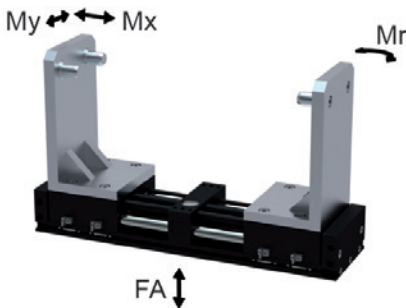
0 without clamping
1 with clamping
2 with 2 clampings

Stroke

125 stroke 125
188 stroke 188
200 stroke 200
250 stroke 250
300 stroke 300

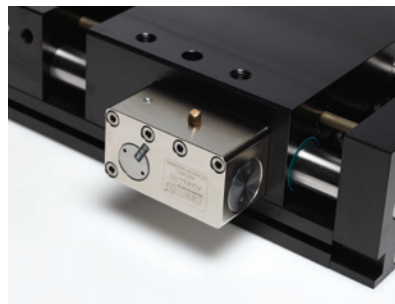
► Force and moment

Displays static forces and moments that can also have an effect, besides the gripping force.



Mr [Nm]	1020
Mx [Nm]	1010
My [Nm]	1020
Fa [N]	18000

► Technical data clamping



opening pressure [bar]	4
holding force [N]	1300

► 2-JAW PARALLEL GRIPPER WITH LONG STROKE PNEUMATIC

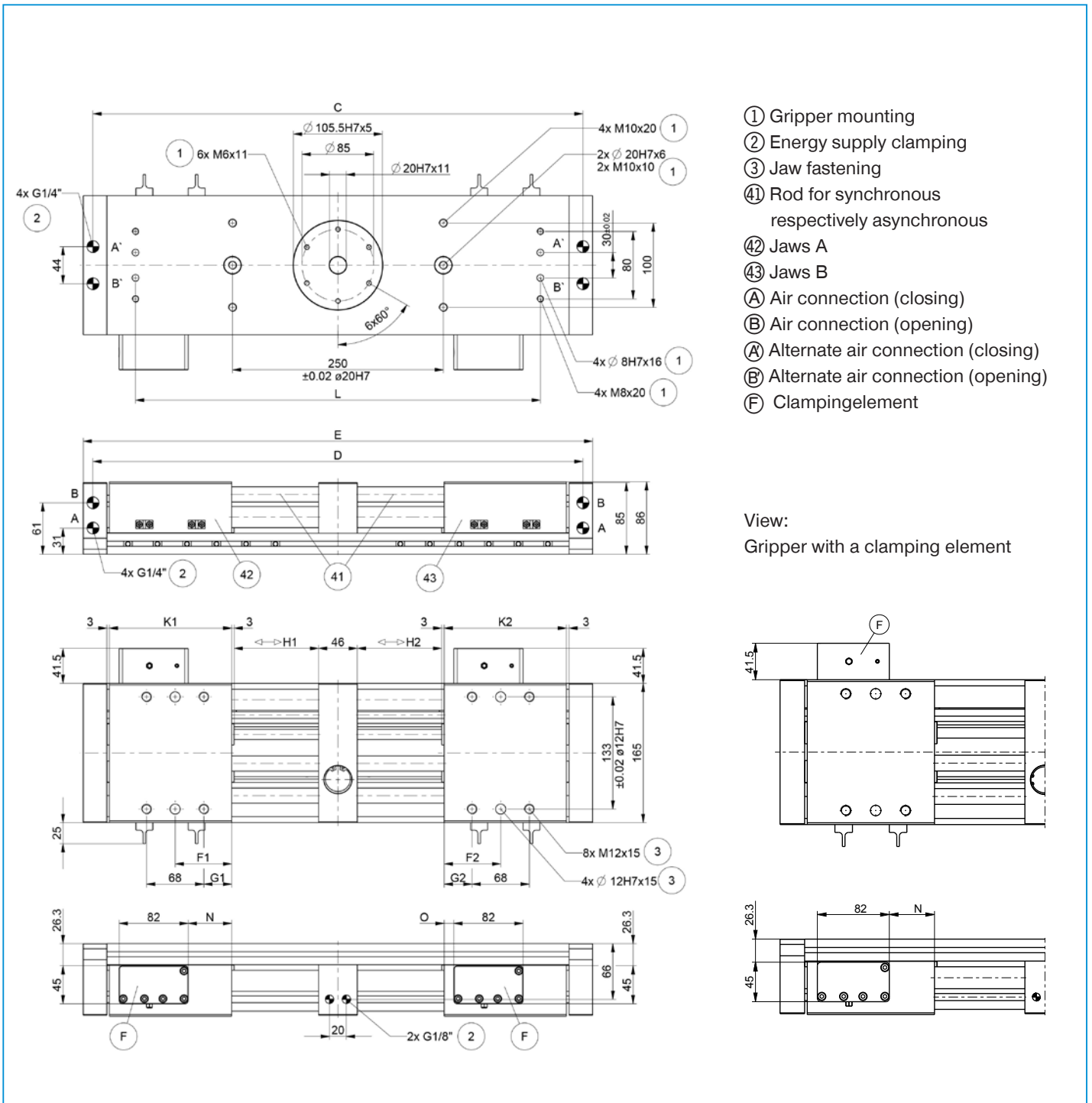
► Technical data

Stroke	Gripping force [N]		Operating pressure [bar]		Operating temperature [°]		Air volume per cycle [cm³]	Weight* [kg]
	closing	opening	min.	max.	min.	max.		
GH1125	2036	2036	3	8	5	80	610	19,2
GH1188	2036	2036	3	8	5	80	814	22,1
GH1200	2036	2036	3	8	5	80	724	20,5
GH1250	2036	2036	3	8	5	80	1018	25,2
GH1300	2036	2036	3	8	5	80	1087	26,1

* depending on version

GRIPPER SERIES GH1000

2-JAW PARALLEL GRIPPER WITH LONG STROKE



▶ 2-JAW PARALLEL GRIPPER WITH LONG STROKE PNEUMATIC

Size	▶ Technical data [mm]													
	C	D	E	F1	F2	G1	G2	H1	H2	K1	K2	L	N	O
GH1125	506	506	529	67 +/- 0,02	67 +/- 0,02	33	33	62,5	62,5	145	145	405	51,5	11,5
GH1188	618,5	618,5	641,5	97,5 +/- 0,02	67 +/- 0,02	63,5	33	125	62,5	195	145	517,5	76,5	11,5
GH1200	581	581	604	67 +/- 0,02	67 +/- 0,02	33	33	100	100	145	145	480	51,5	11,5
GH1250	731	731	754	97,5 +/- 0,02	67 +/- 0,02	63,5	63,5	125	125	195	195	630	76,5	36,5
GH1300	781	781	804	97,5 +/- 0,02	67 +/- 0,02	63,5	63,5	150	150	195	195	680	76,5	36,5