



Handling technology

Module for
YASKAWA robots

THE KNOW-HOW FACTORY

THE KNOW-HOW FACTORY

ZIMMER GROUP COMMITTED TO OUR CUSTOMERS

WE HAVE SUCCEEDED FOR YEARS BY OFFERING OUR CUSTOMERS INNOVATIVE AND INDIVIDUALIZED SOLUTIONS. ZIMMER HAS GROWN CONTINUOUSLY AND TODAY WE HAVE REACHED A NEW MILESTONE: THE ESTABLISHMENT OF THE KNOW-HOW FACTORY. IS THERE A SECRET TO OUR SUCCESS?

Foundation. Excellent products and services have always been the foundation of our company's growth. Zimmer is a source of ingenious solutions and important technical innovations. This is why customers with high expectations for technology frequently find their way to us. When things get tricky, Zimmer Group is in its best form.

Style. We have an interdisciplinary approach to everything we do, resulting in refined process solutions in six technology fields. This applies not just to development but to production. Zimmer Group serves all industries and stands ready to resolve even the most unique and highly individualized problems. Worldwide.

Motivation. Customer orientation is perhaps the most important factor of our success. We are a service provider in the complete sense of the word. With Zimmer Group, our customers have a single, centralized contact for all of their needs. We approach each customer's situation with a high level of competence and a broad range of possible solutions.



HMI – HUMAN MACHINE INTERFACE

EASY TO INTEGRATE – EASY TO USE

SIMPLE OPERATION

Operating Industrie 4.0 components from Zimmer Group is just as easy and flexible as installing them. What originally applied primarily for industrial control systems is now also available for robots.

In doing so, operation is integrated completely into the robot control system. As a result, the Zimmer Group components can now be configured manually using the robot control panel directly and integrated into the robot program sequence. An external PLC control system is not required to do this. The Yaskawa specialists oriented themselves toward the already familiar Zimmer HMI to create a uniform, intuitive user interface for the user.

The user can control the complete IO-Link gripper portfolio from the Zimmer Group using this tailor-made complete system and can use pneumatic, electrical, servo-electric as well as digital Zimmer Group components with the innovative MOTOMAN robots from YASKAWA.

BECAUSE SIMPLE IS SIMPLY BETTER

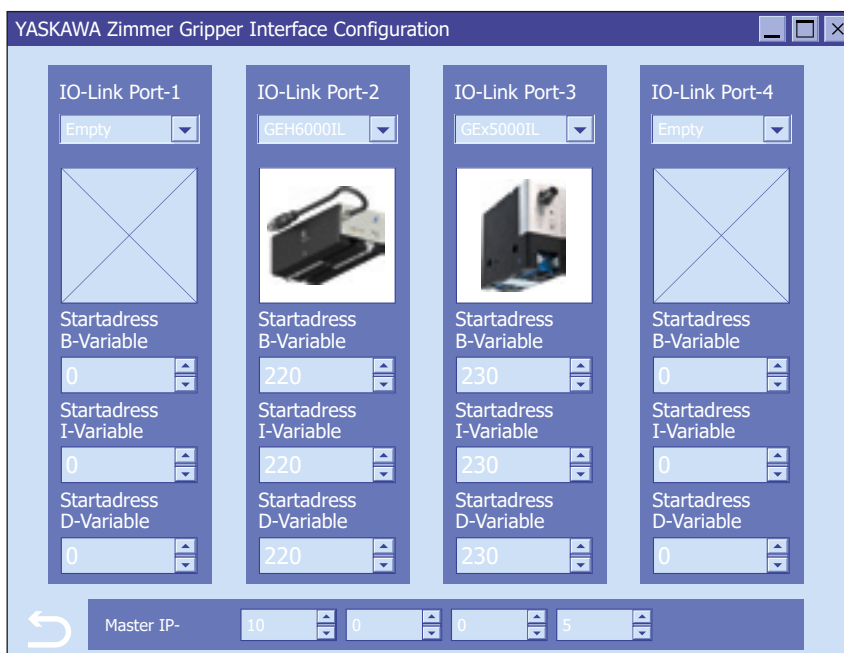
This integration makes it possible for the user to enable maximum levels of flexibility and straightforward adaptation, storage and restoring device parameters during the creation of new application-specific profiles.

Furthermore, the Zimmer HMI supports condition monitoring or predictive maintenance of the components. This makes it possible for any user to implement and commission Zimmer Group components within a few minutes. This simplifies the interaction of robots and handling of components considerably.

CONFIGURATION

► Graphic component selection

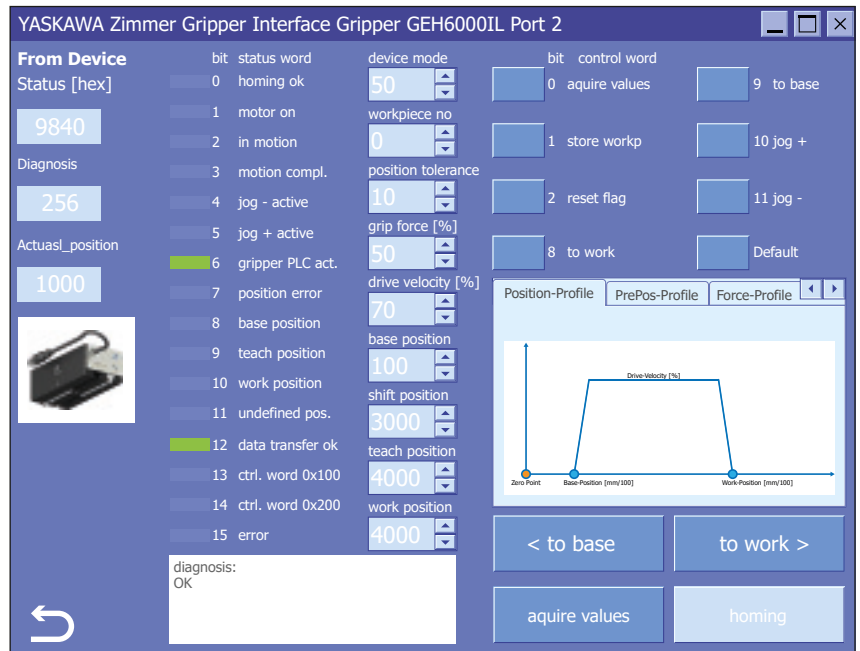
Easiest assignment of a Zimmer gripper to the robot



MANUAL OPERATION

► Generating the gripper process parameters

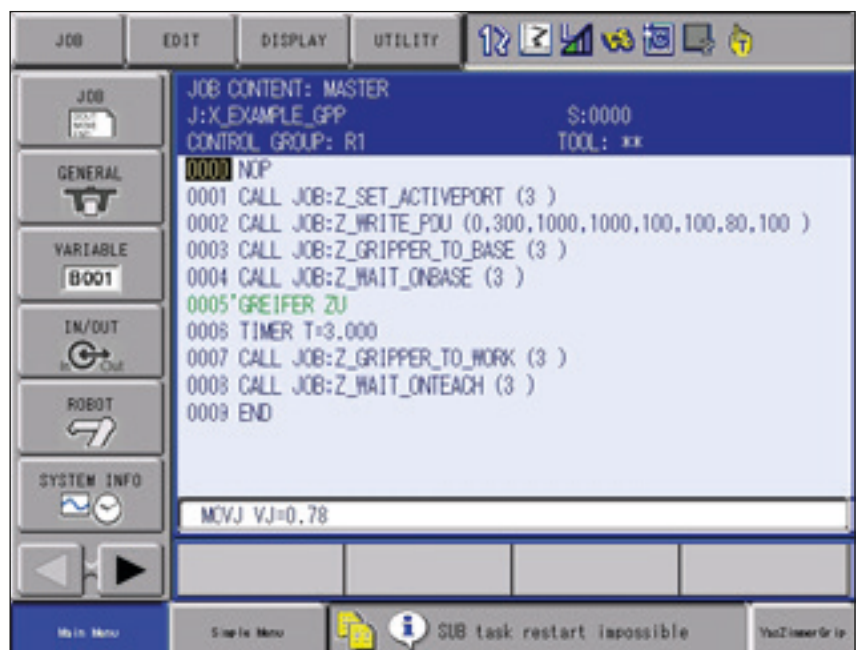
such as gripping forces, gripper positions, gripping speed, etc.



AUTOMATIC MODE ROBOT

► Use of function blocks

such as Open gripper / Close gripper, etc. for easy operation



HUMAN – ROBOT

DIFFERENT FORMS OF INTERACTION

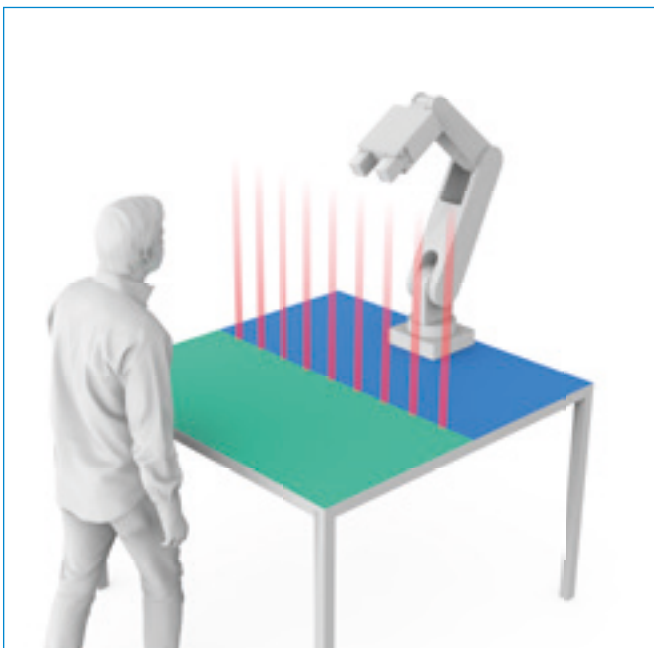
CONVENTIONAL COMPONENTS

► Automation cell



- Separated workspaces
- Workpiece handling in a secure area
- All gripping systems can be used
- Decoupled work
- No contact necessary
- Maximum speed

► Coexistence



- Detection of presence
- Workpiece handling in a secure area
- All gripping systems can be used
- Separated workspaces
- Decoupled work
- No contact necessary
- Reduced speed

HRC COMPONENTS

► Cooperation



- Zones of action
- Workpiece handling in a secure area
- Gripper with special HRC geometry
- Secure holding of the workpiece even if the power supply fails
- Shared workspaces
- Coupled work
- No contact necessary
- Reduced speed

► Collaboration



- Shared workspaces
- Workpiece handling in an unsecure area
- Gripper with special HRC geometry and reliable gripping force limiter
- Gripping force limited to a max. of 140 N as per ISO/TS 15066
- Secure holding of the workpiece even if the power supply fails
- Coupled work
- Contact is necessary
- Reduced speed

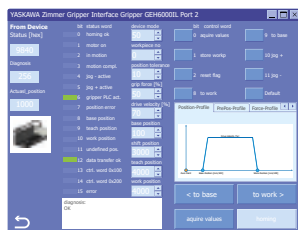
HMI CONFIGURATION PACKAGE

EASY-TO-USE PACKAGE

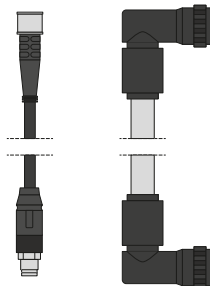
► MAXIMUM PERFORMANCE INCLUDED

The combination of Zimmer Group components, the YASKAWA Easy-to-Use Package and YASKAWA robots ensure the easiest integration as well as intuitive operation.

FOR MORE INFORMATION ABOUT
THE EASY-TO-USE PACKAGE VISIT YASKAWA AT:
www.yaskawa.eu.com



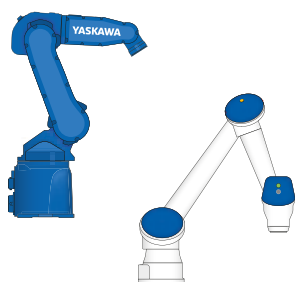
Software



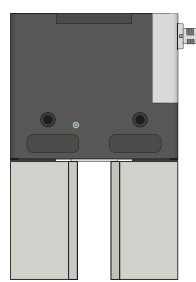
Cables and accessories



IO-Link master



YASKAWA robots*
(industrial / collaborative)



Zimmer Group gripper*

FOR MORE INFORMATION
ABOUT OUR COMPONENTS
VISIT US AT:

www.zimmer-group.com

* Available separately



HUMAN-ROBOT COLLABORATION

EASY TO INTEGRATE – EASY TO HANDLE

WHAT IS HUMAN-ROBOT COLLABORATION?

The demographic development in industrial countries will lead to comprehensive changes in the working world in coming years. In the future, people will collaborate more and more with robots or have their work supported by robots. For this vision of a collaborative working world to become reality, however, we need more than just a new kind of safe robot with overload limiters, comprehensive sensors and fast-reacting control systems. The tool at the end of the robot also has to satisfy comprehensive requirements with respect to occupational safety, work environment, use of equipment, approval and acceptance, etc. The directives concerning specification of the

safety-related requirements for robots, ISO 10218 and their technical specification ISO/TS 15066, currently describe the forms of collaboration. Even though these regulations are currently valid, they are being revisited by both DIN and CEN in the context of collaborative use of robots. That's why a product developed for this purpose should go beyond the current requirements. The HRC gripper series from Zimmer Group have been designed in accordance with recommendations from BG/DGUV (German occupational insurance association/ German Social Accident Insurance).

HRC FROM THE EXPERTS

As a pioneer and one of the world's leading manufacturers of HRC grippers, Zimmer Group develops components specifically for this work environment to reduce the physical load on the

employees, mitigate against monotonous work steps, prevent accidents and increase the efficiency of workflows through human-robot collaboration.



EASY TO INTEGRATE

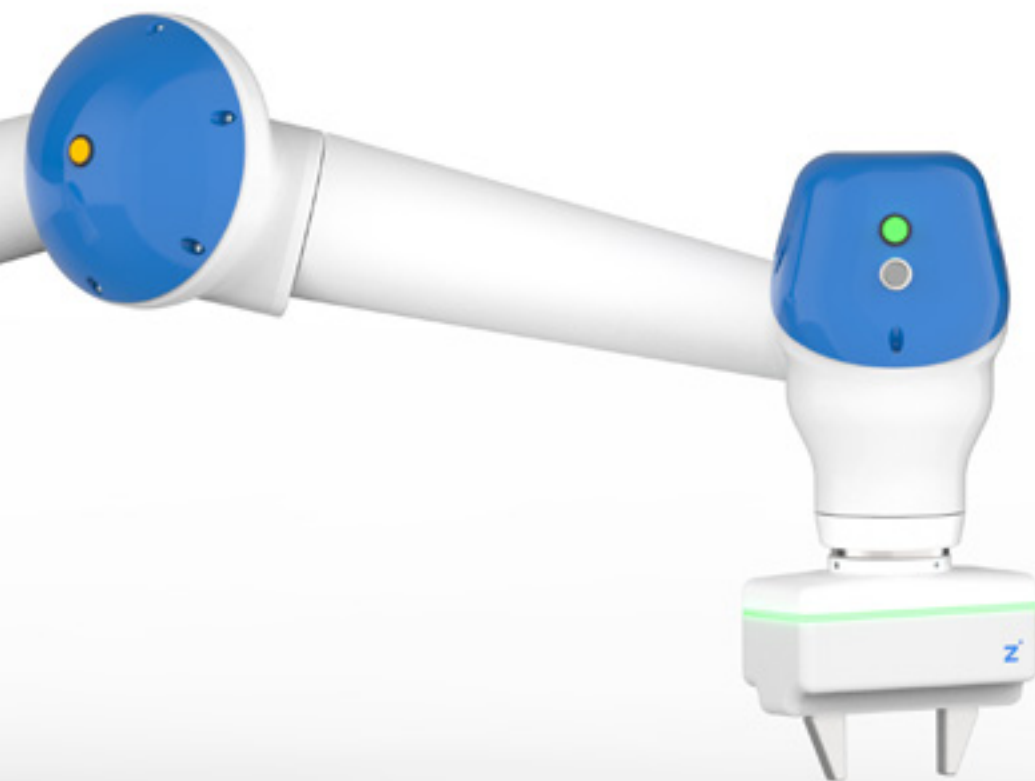
Naturally, however, not only the world's best HRC grippers are available for YASKAWA robots, but also a comprehensive system module specially matched to your model. This provides a broad selection of grippers and handling components with corresponding accessories, so that you don't have to worry about compatibility and integration. Of course, this system

module also includes HRC and Industrie 4.0 components that are compatible with your robot. These open up numerous advantages for you: easy to install, easy to configure, easy to operate, advanced diagnostics and preventive maintenance as well as the ability to make replacements while operation is in progress.

EASY TO HANDLE

The components are operated either using the central control system or, as is the case for most components, using the integrated control panel or via an app. The app offers users the maximum level of flexibility when creating, storing and restoring device parameters and also provides assistance during diagnostics/preventive maintenance. Furthermore, the

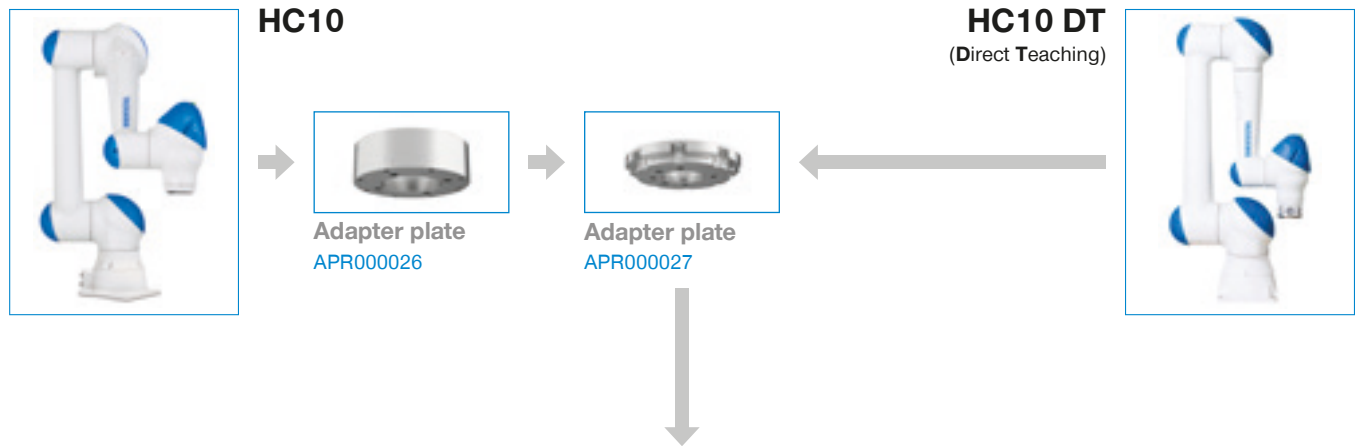
HRC grippers and conventional grippers offer the user practical, pre-programmed movement profiles, which can be adjusted to the individual requirements of the gripping application with just a few mouse clicks. This ensures that complete implementation and commissioning are possible for any user within just a few minutes.

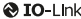

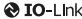

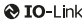



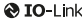





HRC COMPONENTS

THE SERIES AT A GLANCE



2-JAW PARALLEL GRIPPERS					
COOPERATIVE			COLLABORATIVE		
ELECTRIC			ELECTRIC		
HRC-01-072797  	Stroke per jaw: Gripping force: Weight: IP class: Maintenance free (max.):	60 mm 950 N 1.8 kg 40 5 million cycles	HRC-01-072794  	Stroke per jaw: Gripping force (max.): Weight: IP class: Maintenance free (max.):	60 mm < 140 N 2.0 kg 40 5 million cycles
STO safety functions + mechanical self-locking mechanism in the event of a power drop			STO safety functions + mechanical self-locking mechanism in the event of a power drop + safety gripper jaws prevent 140 N from being exceeded		
			HRC-03-080663  	Stroke per jaw: Gripping force (max.): Weight: IP class: Maintenance free (max.):	10 mm < 140 N 0.68 kg 40 10 million cycles
			Mechanical self-locking mechanism in the event of a power drop		
PNEUMATICALLY INTELLIGENT					
			HRC-04-080644  	Stroke per jaw: Gripping force (max.): Weight: IP class: Maintenance free (max.):	6 mm < 140 N 0.76 kg 40 10 million cycles
			Gripping force safety device in case of pressure failure via integrated spring		
2-JAW ANGULAR GRIPPERS					
COLLABORATIVE					
PNEUMATICALLY INTELLIGENT					
			HRC-05-080659  	Stroke per jaw: Gripping force (max.): Weight: IP class: Maintenance free (max.):	37.5° < 140 N 0.82 kg 40 10 million cycles
			Gripping force safety device in case of pressure failure via integrated spring		

CONVENTIONAL COMPONENTS

END OF ARM – CONFIGURATION LEVELS

▶ ROBOT FLANGE

For mechanical connection to the follow-on tools. The energy supply for the components installed on the robot flange is arranged internally or externally, depending on the robot type. Control signals as well as pneumatic, electric and hydraulic media can be passed through this.

▶ ROBOT FLANGE ADAPTER PLATE – MULTI-FUNCTION LEVEL

Adapter plate between specific robot flange and ISO partial mounting circle.

▶ MULTI-FUNCTION LEVEL

Multi-function components with ISO partial mounting circle for changing, compensating, protecting and executing. Energy elements for signal transmission and media transfer are also available for the tool changers.



Rotary distributor



Axis compensation modules



Collision protection



Angle flange



Tool changer



Energy elements

▶ MULTI-FUNCTION LEVEL ADAPTER PLATE – AUTOMATION COMPONENT

Adapter plate between ISO partial mounting circle and automation component.

▶ AUTOMATION COMPONENTS

Various versions of automation components.

2-JAW PARALLEL GRIPPERS



GEP2000
Electric



GEP2000
Electric IL



GPP5000
Pneumatic



GPP5000
Pneumatic IL



GEP5000
Electric



GEP5000
Electric IL



GEH6000IL
Electrically
positionable

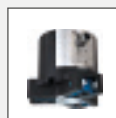
3-JAW CONCENTRIC GRIPPERS



GPD5000
Pneumatic



GPD5000
Pneumatic IL



GED5000
Electric

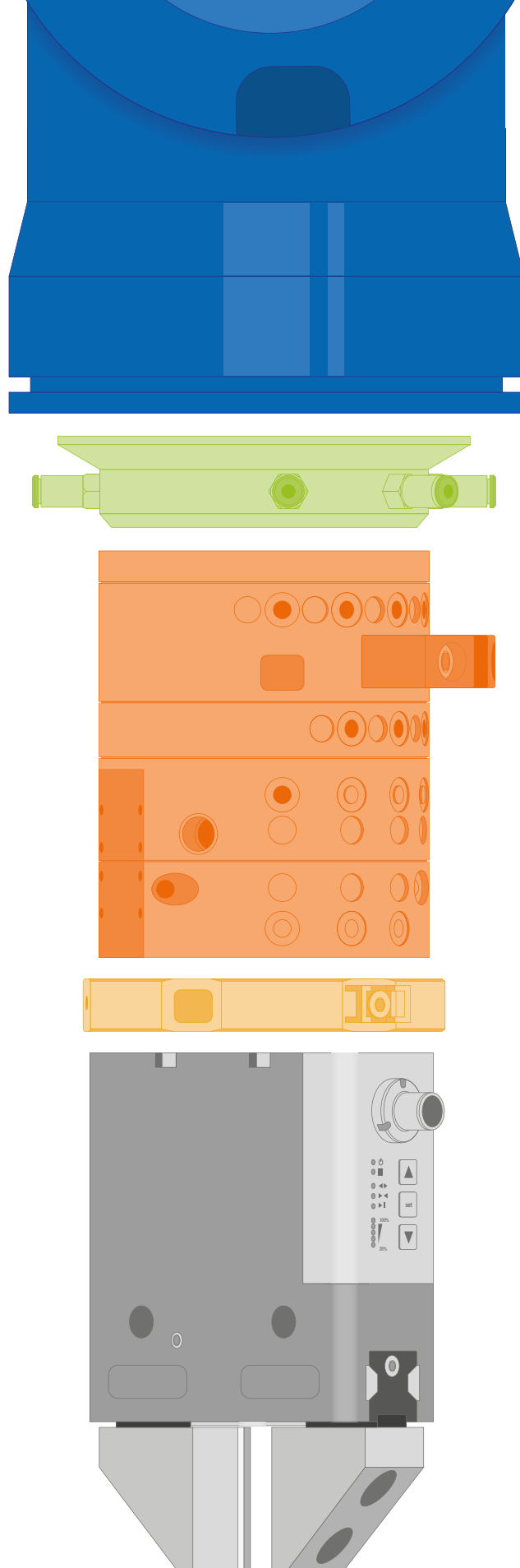


GED5000
Electric IL

2-JAW ANGULAR GRIPPERS

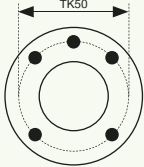






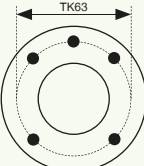
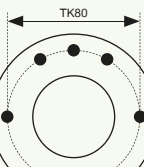


GPW5000
Pneumatic

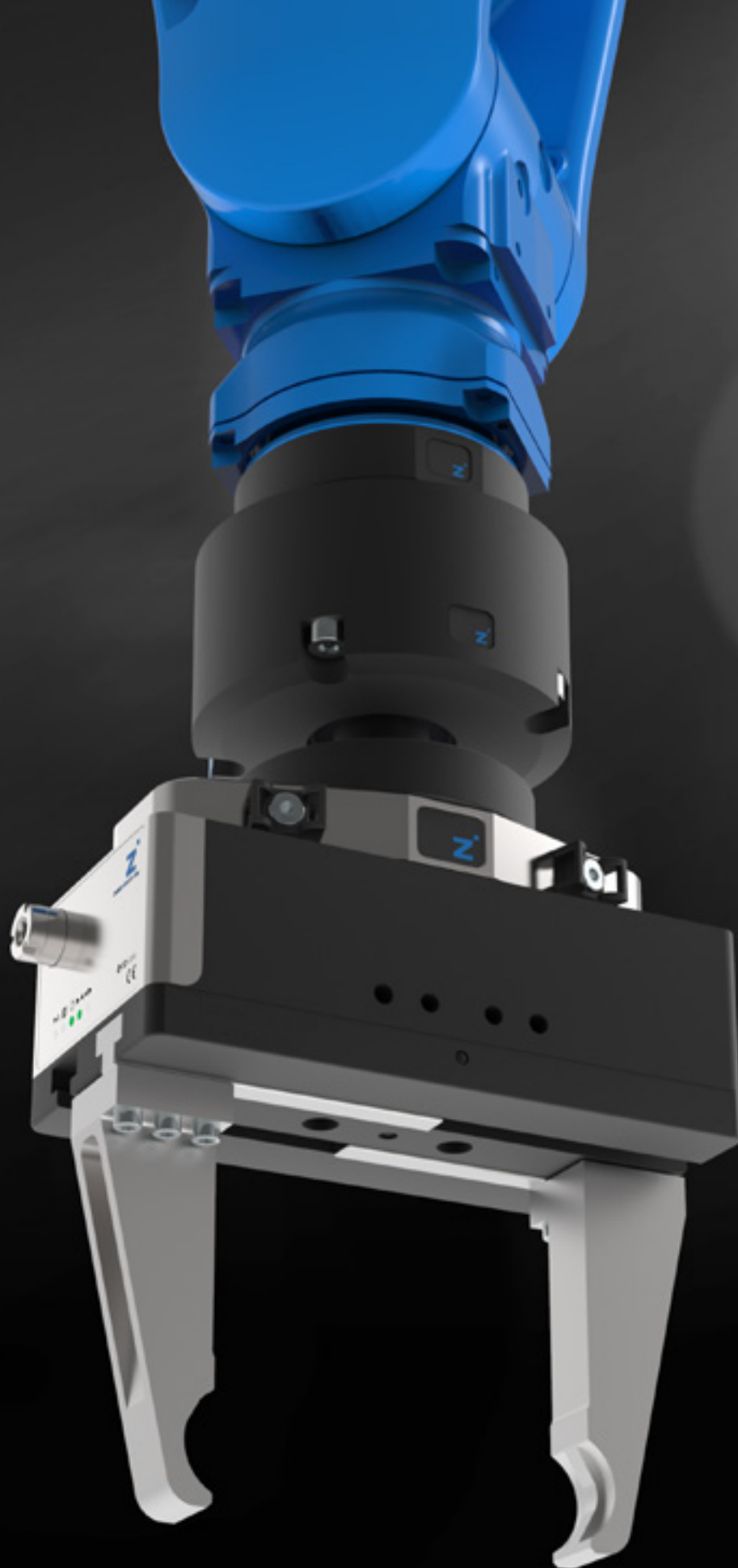


CONVENTIONAL COMPONENTS

COMBINATION OPTIONS

ROBOTS (Handling weight in kg)	ADAPTER PLATE TO BE USED YASKAWA > ISO 9409-01	MULTI-FUNCTION LEVEL (Select to match the respective pitch circle) OPTIONAL	MULTI-FUNCTION LEVEL ADAPTER PLATE
MH5 (5 kg) GP7 (7 kg) GP8 (8 kg)	APR000007 TK50 	 ROTARY DISTRIBUTOR DVR and / or  AXIS COMPENSATION MODULE XYR and / or  AXIS COMPENSATION MODULE ARP and / or  COLLISION PROTECTION CSR and / or  TOOL CHANGER WWR or  ANGLE FLANGE WFR	APR000017 APR000001 APR000018 APR000002 APR000009 APR000025 APR000010 APR000011 APR000012 APR000013 APR000014
GP12 (12 kg) MH12 (12 kg) MH24 (24 kg) GP25 (25 kg)	APR000008 TK63 		
GP50 (50 kg) MH50 (50 kg)	None (already ISO) TK80 		

Standard combination options. Further combinations available on request.



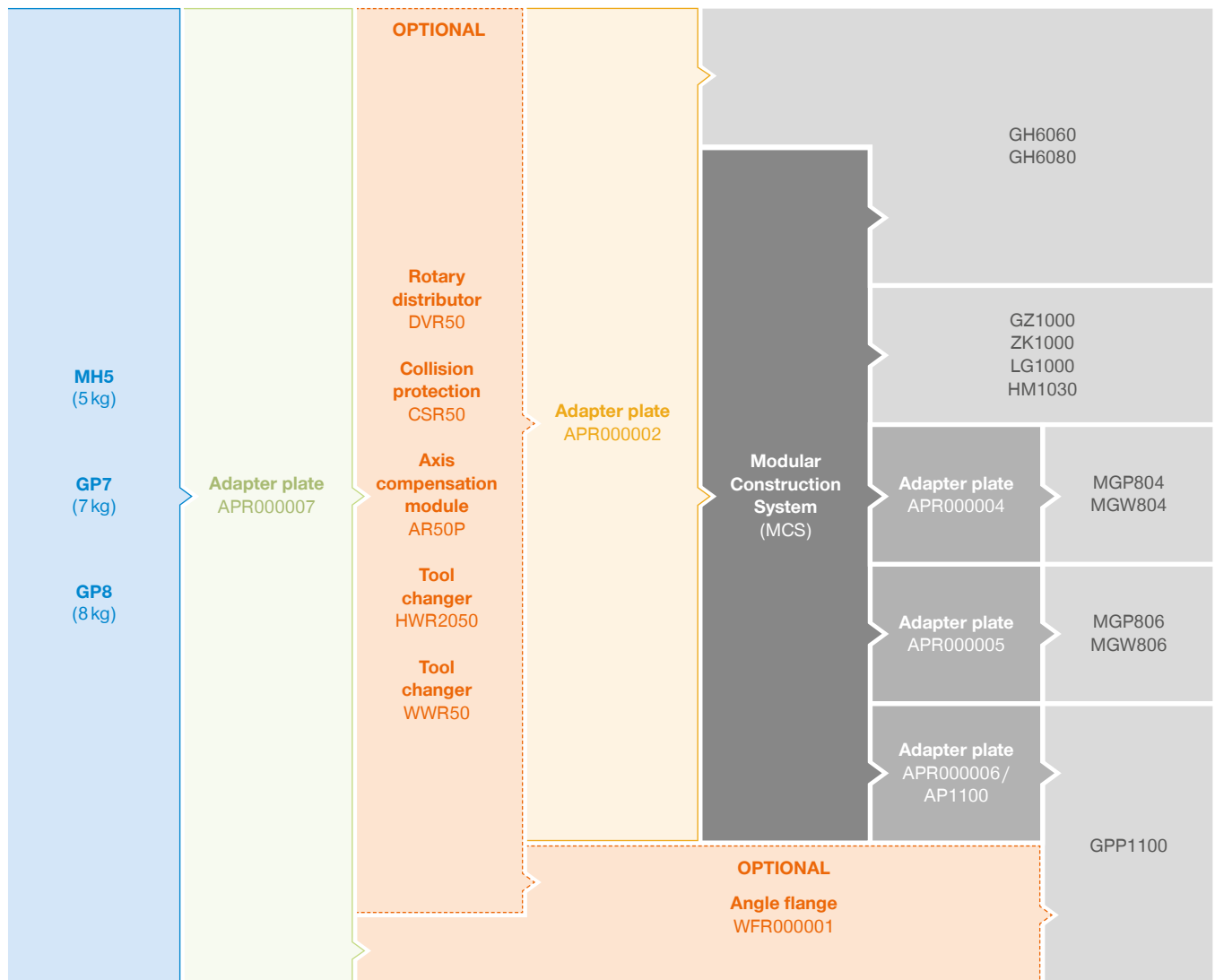
CONVENTIONAL COMPONENTS

THE SERIES AT A GLANCE

2-JAW PARALLEL GRIPPERS					
PNEUMATIC		ELECTRIC			
GPP1000 	Number of installation sizes:	1	GEP2000 	Number of installation sizes:	3
	Stroke per jaw:	4 mm - 16 mm		Stroke per jaw:	10 mm - 16 mm
	Gripping force:	100 N		Gripping force:	50 N - 500 N
	Weight:	0.16 kg - 0.20 kg		Weight:	0.31 kg - 0.9 kg
	IP class:	30		IP class:	40
	Maintenance free (max.):	2 million cycles		Maintenance free (max.):	10 million cycles
GPP5000 	Number of installation sizes:	11	GEP5000 	Number of installation sizes:	3
	Stroke per jaw:	2 mm - 45 mm		Stroke per jaw:	6 mm - 10 mm
	Gripping force:	140 N - 26950 N		Gripping force:	540 N - 1520 N
	Weight:	0.08 kg - 50 kg		Weight:	0.79 kg - 1.66 kg
	IP class:	64/67		IP class:	64
	Maintenance free (max.):	30 million cycles		Maintenance free (max.):	30 million cycles
PNEUMATICALLY INTELLIGENT					
GPP5000IL 	Number of installation sizes:	3			
	Stroke per jaw:	3 mm - 10 mm			
	Gripping force:	330 N - 2890 N			
	Weight:	0.45 kg - 1.45 kg			
	IP class:	64			
	Maintenance free (max.):	30 million cycles			
2-JAW PARALLEL GRIPPERS WITH LONG STROKE					
ELECTRIC					
GEH6000IL 	Number of installation sizes:	2			
	Stroke per jaw:	up to 80 mm			
	Gripping force:	100 N - 2400 N			
	Weight:	0.7 kg - 2.6 kg			
	IP class:	54			
	Maintenance free (max.):	5 million cycles			
3-JAW CONCENTRIC GRIPPERS					
PNEUMATIC			ELECTRIC		
GPD5000 	Number of installation sizes:	11	GED5000 	Number of installation sizes:	3
	Stroke per jaw:	2 mm - 45 mm		Stroke per jaw:	6 mm - 10 mm
	Gripping force:	310 N - 72500 N		Gripping force:	540 N - 1520 N
	Weight:	0.14 kg - 99.9 kg		Weight:	1.09 kg - 2.33 kg
	IP class:	64/67		IP class:	64
	Maintenance free (max.):	30 million cycles		Maintenance free (max.):	30 million cycles
PNEUMATICALLY INTELLIGENT					
GPD5000IL 	Number of installation sizes:	3			
	Stroke per jaw:	3 mm - 10 mm			
	Gripping force:	740 N - 7160 N			
	Weight:	0.75 kg - 2.5 kg			
	IP class:	64			
	Maintenance free (max.):	30 million cycles			
2-JAW ANGULAR GRIPPERS					
PNEUMATIC					
GPW5000 	Number of installation sizes:	3			
	Stroke per jaw:	+15° / -2°			
	Gripping force:	1450 N - 14500 N			
	Weight:	0.9 kg - 12.1 kg			
	IP class:	64			
	Maintenance free (max.):	30 million cycles			

CONVENTIONAL COMPONENTS

CONNECTION VIA MCS

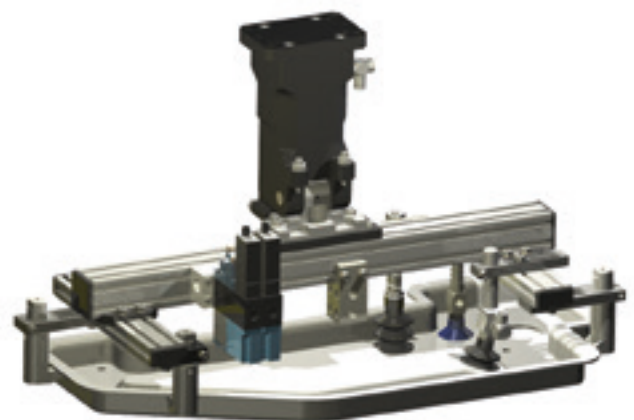


MCS – MODULAR CONSTRUCTION SYSTEM

The modular construction system (MCS) can be used to create a workpiece-specific solution without increased engineering efforts. This is made possible by the harmonized individual components.

The product portfolio includes profiles, compensation modules, suction cup mounts as well as gripper fingers that guarantee a secure grip on the workpiece during motion.

For a complete overview of all the MCS components, refer to our "Handling technology 3" catalog or visit us online at www.zimmer-group.com.



CONVENTIONAL COMPONENTS

THE SERIES AT A GLANCE

2-JAW PARALLEL GRIPPERS

PNEUMATIC

GPP1000



Number of installation sizes: 1
Stroke per jaw: 4 mm - 16 mm
Gripping force: 100 N
Weight: 0.16 kg - 0.20 kg
IP class: 30
Maintenance free (max.): 2 million cycles

MGP800



Number of installation sizes: 8
Stroke per jaw: 1 mm - 12 mm
Gripping force: 6 N - 400 N
Weight: 0.008 kg - 0.46 kg
IP class: 40
Maintenance free (max.): 10 million cycles

2-JAW PARALLEL GRIPPERS WITH LONG STROKE

PNEUMATIC

GH6000



Number of installation sizes: 5
Stroke per jaw: 20 mm - 200 mm
Gripping force: 120 N - 3400 N
Weight: 0.3 kg - 22.7 kg
IP class: 40
Maintenance free (max.): 10 million cycles

2-JAW ANGULAR GRIPPERS

PNEUMATIC

GZ1000



Number of installation sizes: 3
Stroke per jaw: 8° - 11°
Gripping force: 62 N - 315 N
Weight: 0.015 kg - 0.125 kg
IP class: 30
Maintenance free (max.): 10 million cycles

MGW800



Number of installation sizes: 8
Stroke per jaw: 37.5°
Gripping force: 5 N - 325 N
Weight: 0.01 kg - 0.45 kg
IP class: 30
Maintenance free (max.): 10 million cycles

GRIPPERS FOR SPECIAL TASKS

INTERNAL GRIPPER

LG1000



Total stroke in Ø: 2.5 mm - 3.5 mm
Gripping diameter (min.): 8 mm - 15 mm
Gripping diameter (max.): 10.5 mm - 18.5 mm
Slip force (max.): 53 N - 58 N
Weight: 0.028 kg - 0.041 kg

MAGNETIC GRIPPER

HM1000



Adhesive force (max.): 27 N - 450 N
Weight: 0.06 kg - 2.2 kg

CUTTING TONGS

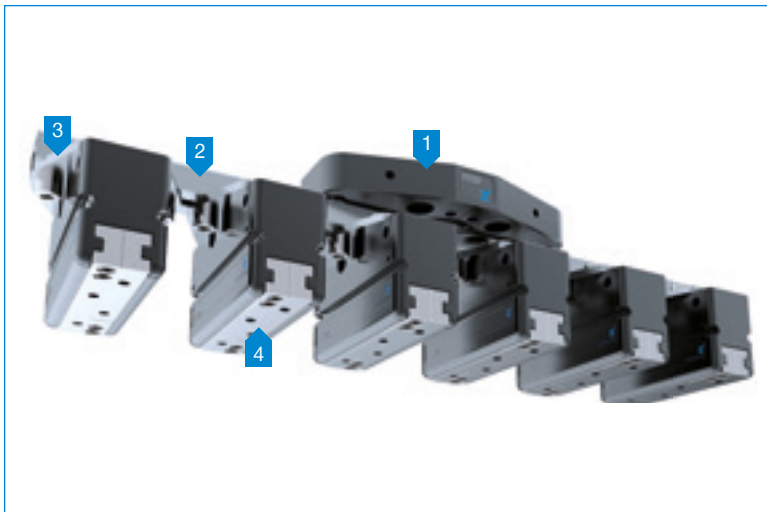
ZK1000



Stroke per jaw: 4.25° - 13°
Gripping moment in closing: 14 Nm - 400 Nm
Weight: 0.08 kg - 0.67 kg

MODULAR CONSTRUCTION SYSTEM (MCS)

CONNECTION EXAMPLES



* See the Handling technology 3 catalog

CONNECTION EXAMPLE GPP1000 SERIES

YASKAWA ROBOTS GP7 / GP8 / GP12

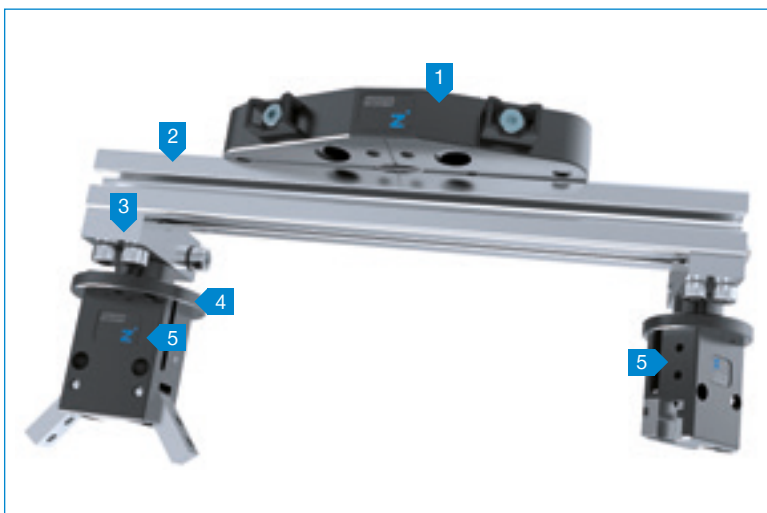
Adapter plate [APR000007](#)

1 Adapter plate [APR000002](#)

2 MCS Profile*

3 Adapter plate [APR000006](#)

4 Series [GPP1000](#)



* See the Handling technology 3 catalog

CONNECTION EXAMPLE MGP800 and MGW800 SERIES

YASKAWA ROBOTS GP7 / GP8 / GP12

Adapter plate [APR000007](#)

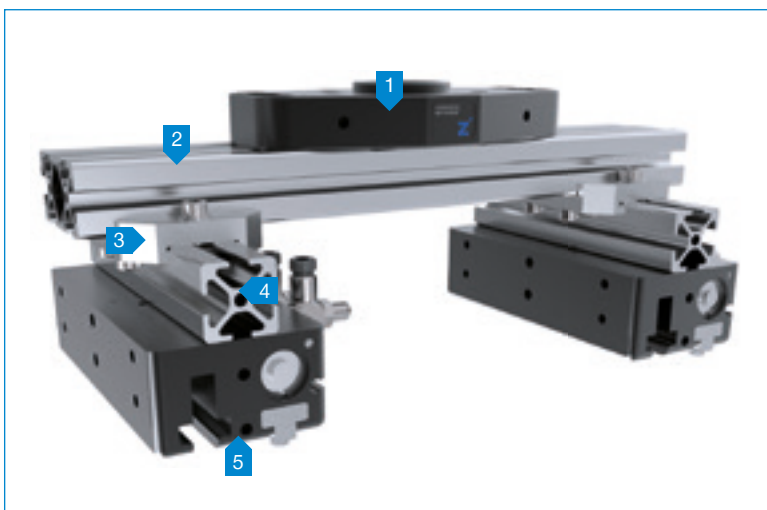
1 Adapter plate [APR000002](#)

2 MCS Profile*

3 MCS Clamp [SO-23120022*](#)

4 Adapter plate [APR000004/APR000005](#)

5 Series [MGP800 and MGW800](#)



* See the Handling technology 3 catalog

CONNECTION EXAMPLE GEH6000IL / GH6000 SERIES

YASKAWA ROBOTS GP7 / GP8 / GP12

Adapter plate [APR000007](#)

1 Adapter plate [APR000002](#)

2 MCS Profile*

3 MCS Cross clamp*

4 MCS Profile*

5 Series [GEH6000IL/GH6000](#)

USAGE NOTE

GENERAL INFORMATION

The contents of this catalog are not legally binding and are intended solely for informational purposes. Any final agreement will be in the form of a written order confirmation from Zimmer GmbH, which occurs only subject to the respective current General Terms and Conditions of Sale and Delivery of Zimmer GmbH. These can be found online at www.zimmer-group.com.

All of the products listed in this catalog are designed for their intended use, e.g. machines for automation. The recognized technical regulations for safety and professional work must be followed for use and installation. Furthermore, the respective laws, guidelines from TÜV, guidelines from the respective trade association and VDE stipulations shall apply.

The technical data listed in this catalog must be observed by the user. The user must not exceed or fail to meet the specified data. If that information is missing, it cannot be assumed that there are no upper or lower limits or no limitations for specific use cases. Consultation is always required for unusual use cases.

Disposal is not included in the price, which would have to be taken into account accordingly in the event of return to or disposal by Zimmer GmbH.

TECHNICAL DATA AND FIGURES

The technical data and figures have been compiled with great care and to the best of our knowledge. We cannot guarantee that the information is up to date, correct or complete.

The specifications and information—such as figures, drawings, descriptions, dimensions, weights, materials, technical and other performance data and the described products and services—contained in general product descriptions, Zimmer GmbH catalogs, brochures and price lists in any form are subject to change and may be modified or updated at any time without prior notification. They are binding only to the extent expressly specified in a contract or order confirmation. Slight deviations from such descriptive product information shall be considered approved and shall not affect fulfillment of agreements insofar as they are reasonable for the customer.

LIABILITY

Products from Zimmer Group are subject to the German Product Liability Act. This catalog does not contain any guarantees, assurances of quality or procurement agreements for the products it depicts, neither expressly nor implied, including for the availability of products. Advertising statements relating to quality features, properties or applications for the products are not legally binding.

To the extent permitted by law, Zimmer GmbH is exempt from any liability for direct or indirect damage, subsequent damage and requests of any kind or on any legal basis resulting from the use of information contained in this catalog.

TRADEMARK, COPYRIGHT AND REPRODUCTION

The depiction of commercial property rights in this catalog—such as brands, logos, registered trademarks or patents—does not include the granting of licenses or use rights. Their use is not permitted without the express written agreement of Zimmer GmbH. All contents of this catalog are the intellectual property of Zimmer GmbH. For the purposes of copyright, any unlawful use of intellectual property, including excerpts, is prohibited. Reprinting, copying or translating (including in the form of excerpts) are permitted only with the prior written consent of Zimmer GmbH.

STANDARDS

Zimmer Group has a quality management system certified in accordance with ISO 9001:2008. Zimmer Group has an environmental management system certified in accordance with ISO 14001:2017.

The contents and data correspond to the status as of printing. Edition 06/2018.

This catalog was created with great care and all information has been checked for accuracy. However, we assume no liability for incorrect or incomplete information.

Zimmer Group reserves the right to technical changes and improvements through constant ongoing development of products and services.

All text, images, depictions and illustrations in this catalog are the property of Zimmer Group and protected by copyright. Any duplicating, editing, changing, translating, filming, processing or saving in electronic systems is prohibited without the consent of Zimmer Group.