



INSTALLATION INSTRUCTIONS

Magic Cups

DDOC02522

THE KNOW-HOW FACTORY

Content

1	Introduction	3
1.1	Supporting documents	3
1.2	Notices and graphics in the installation and operating instructions	3
1.3	Figures	3
2	Proper use	3
3	Design	4
4	Installing the product	5
4.1	Connecting the suction lip with the connecting element	5
4.2	Connecting the bellows with the connecting element	5
4.3	Connecting the bellows with the suction lip	6
4.4	Inserting the filter disk into the bellows with thread	6
4.5	Connecting the bellows with thread to the suction lip	7
5	Appendix	8
5.1	Determining the structural side	8

1 Introduction

1.1 Supporting documents

NOTICE



Read through the installation instructions before installing or working with the product.

The installation instructions contain important notices for your personal safety. They must be read and understood by all persons who work with or handle the product during any phase of the product lifetime.



The documents listed below are available for download on our website www.zimmer-group.com:

- Installation instructions
- Catalogs, drawings, CAD data, performance data
- Information on accessories
- Technical data sheets
- General Terms and Conditions (GTCs), including warranty information.

⇒ Only the documents currently available on the website are valid.

In these installation and operating instructions, “product” replaces the product designation on the title page.

1.2 Notices and graphics in the installation and operating instructions

NOTICE



This notice warns of possible material and environmental damage. Ignoring these notices can result in damage to the product or the environment.

► You absolutely must comply with the described measures for avoiding these dangers.

INFORMATION



This category contains useful tips for handling the product efficiently. Failure to observe these tips will not result in damage to the product. This information does not include any information relevant to health or workplace safety.

1.3 Figures

The figures may deviate from the actual state.

2 Proper use

NOTICE



The product is only to be used in its original state with its original accessories, with no unauthorized changes and within the stipulated parameter limits and operating conditions.

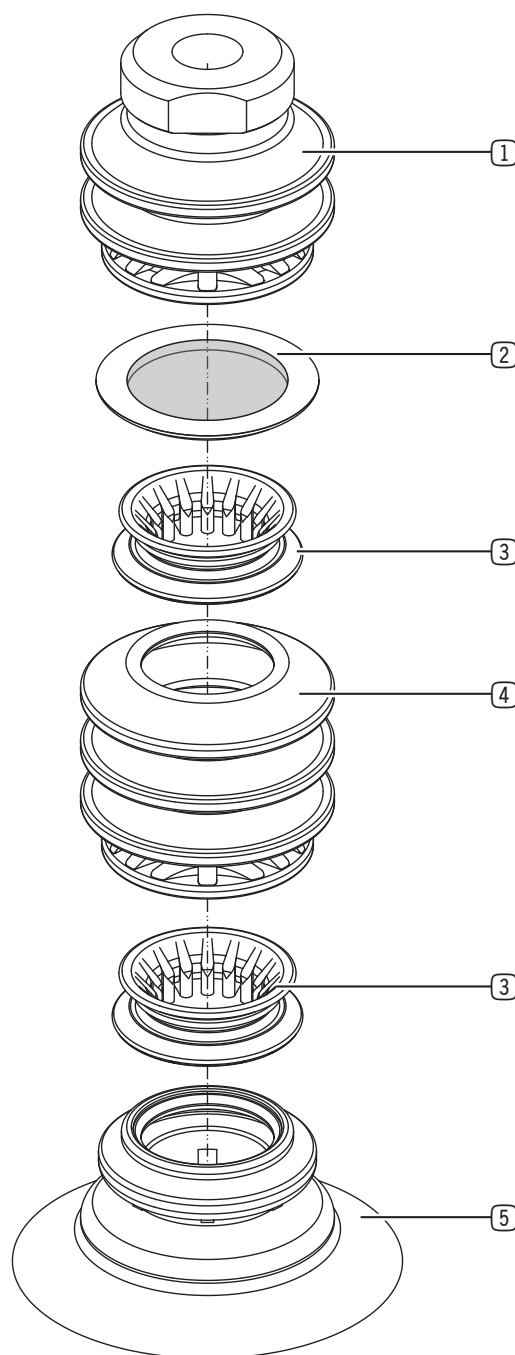
Any other or secondary use is deemed improper.

- Operate the product only in compliance with the associated installation instructions.
- Operate the product only when it is in a technical condition that corresponds to the guaranteed parameters and operating conditions.

⇒ Zimmer Group GmbH accepts no liability for any damage caused by improper use. The operator bears sole responsibility.

3 Design

- ① Bellows with thread
- ② Filter element
- ③ Connection element
- ④ Bellows
- ⑤ Suction lip



4 Installing the product

NOTICE



Risk of material damage due to sharp objects

- Do not use any sharp objects for installation.

INFORMATION



- Alternatively, you can find information on installation in the video on our website.

INFORMATION

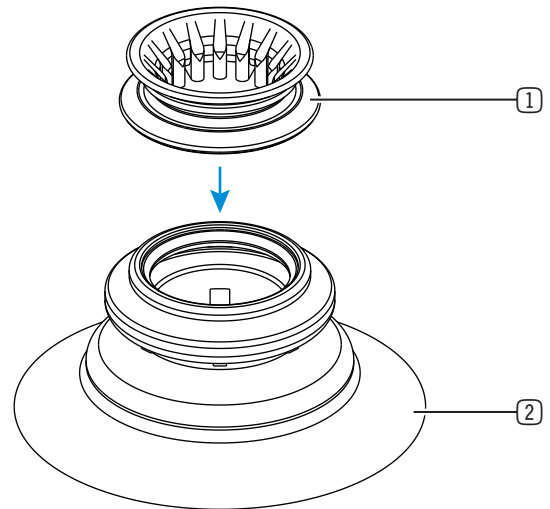


The connecting element is already fitted to the following type of suction lip:

- S

4.1 Connecting the suction lip with the connecting element

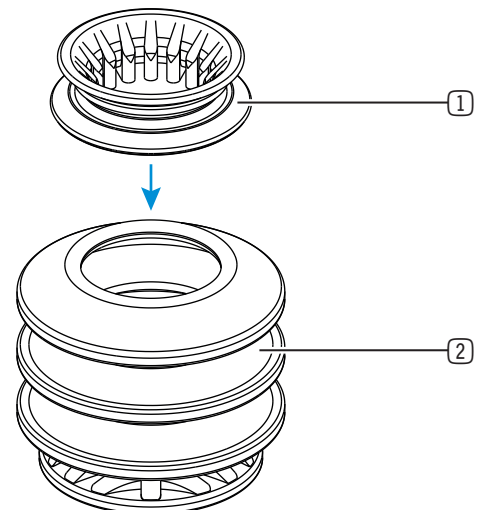
- Pull the suction lip over the structural side of the connecting element.
- Please note section „5.1 Bestimmung der Stukturseite“.



- ① Connection element
- ② Suction lip

4.2 Connecting the bellows with the connecting element

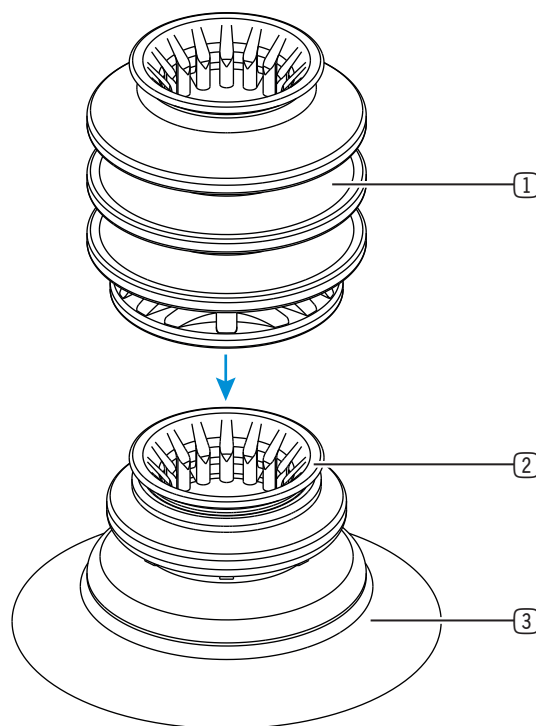
- Carry out the following steps if your configuration includes a second bellows.
- Please note that two bellows are always connected with a type D connecting element.
- Pull the bellows over the structural side of the connecting element.
- Please note section „5.1 Bestimmung der Stukturseite“.



- ① Connection element
- ② Bellows

4.3 Connecting the bellows with the suction lip

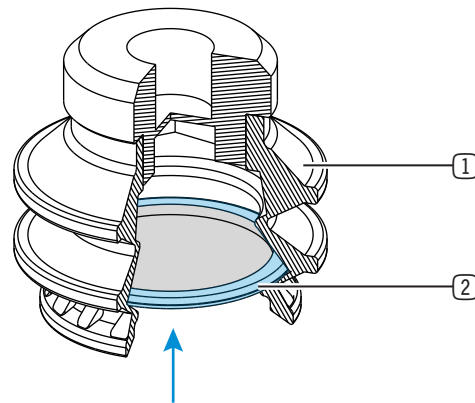
- Carry out the following steps if your configuration includes a second bellows.
- Slide the connecting element with the suction lip into the bellows.
 - If necessary, tilt the connecting element with the suction lip slightly and insert it with one side first.



- ① Bellows
- ② Connection element
- ③ Suction lip

4.4 Inserting the filter disk into the bellows with thread

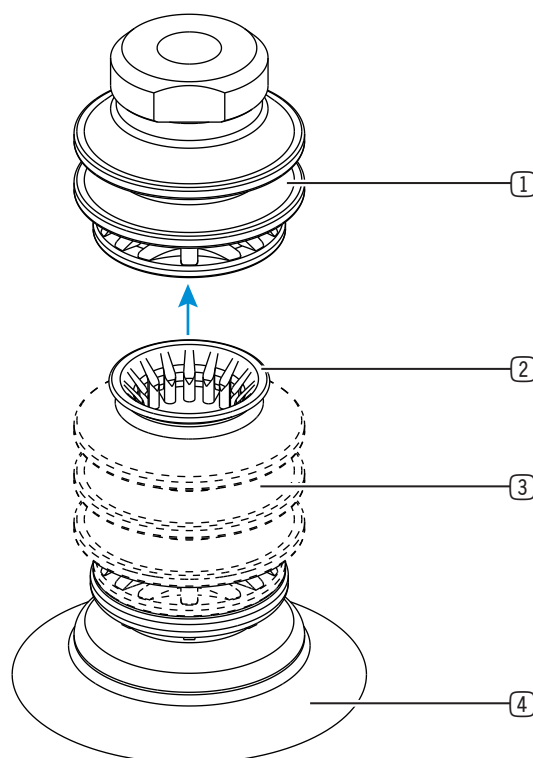
- Carry out the following steps if you have selected a filter disk in your configuration.
- Insert the filter disk into the bellows.
 - Make sure that the filter disk is positioned in the bellows as shown in the adjacent picture.



- ① Bellows
- ② Filter disk

4.5 Connecting the bellows with thread to the suction lip

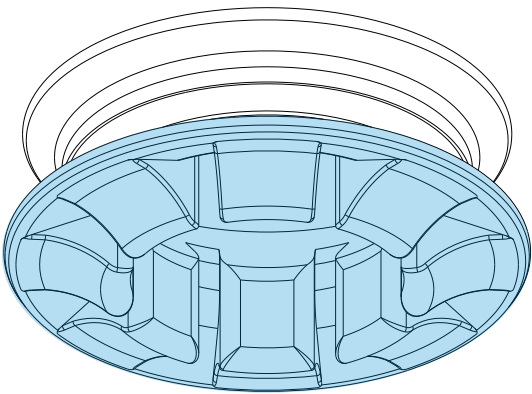
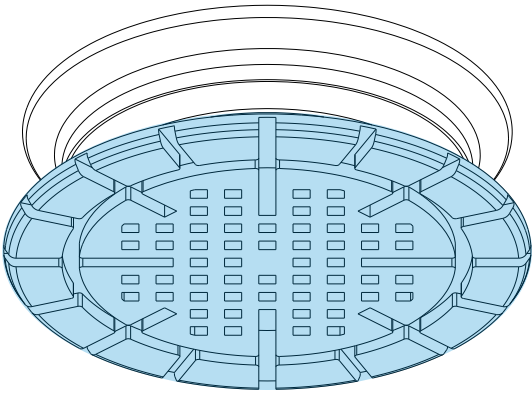
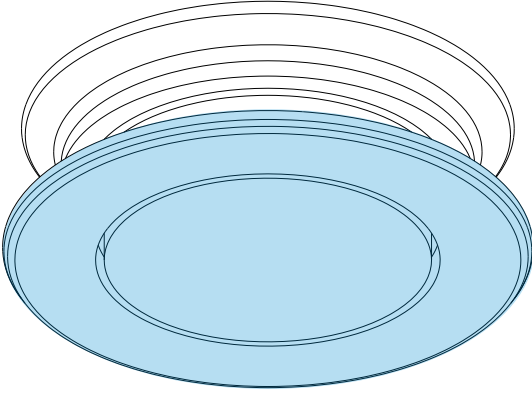
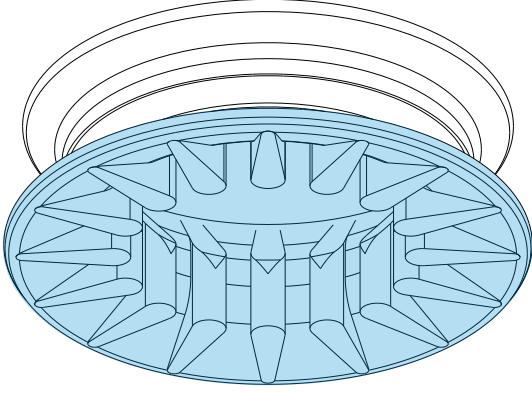
- Please note that, depending on the configuration selected, a bellows is already fitted to the suction lip.
- Pull the bellows with thread over the connection element.



- ① Bellows with thread
- ② Connection element
- ③ Bellows
- ④ Suction lip

5 Appendix

5.1 Determining the structural side

Type	Structural side
A	
B	
C	
D	

Type	Structural side
G	