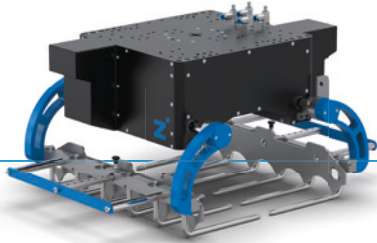


# BAG GRIPPER

## SERIES BAG1000


### ▶ PRODUCT ADVANTAGES





- ▶ Synchronous, pneumatically operated jaw movement and force conservation keep the bag centered and ensure a long service life
- ▶ Large drive cylinders for fast cycle times of up to 20 cycles per minute, depending on the robot and travel distance
- ▶ Optional functions such as hold-down equipment, intermediate layer handling and pallet handling
- ▶ Special forks for foodstuffs or for hazardous/chemical materials
- ▶ Palletizing and depalletizing software for Yaskawa/ABB robots available


### ▶ SERIES CHARACTERISTICS

**IP 54** IP54

 Pneumatic

 External gripping

 Gripper jaws are synchronized

 Gripping force safety device for pressure maintenance

### ▶ CHALLENGE AND SOLUTION

- ▶ Long life and low maintenance thanks to synchronous drive via gear pinion mechanism
- ▶ Fast cycle time for high productivity with powerful drive cylinders for fast cycle times
- ▶ Short changeover times even with different items thanks to flexibly adjustable gripper jaws
- ▶ Various jaw materials and shapes allow a wide range of applications, regardless of the bag material and contents
- ▶ Modular accessories for various process steps – such as top pressure units or grippers for intermediate layers and pallets, etc.
- ▶ High rigidity and holding force with the pressure holding mechanism ensure adequate pressure when gripping workpieces
- ▶ Mechanical cover for entire mechanism allows use in dusty and humid environments

### ▶ BAG GRIPPER APPLICATIONS

- ▶ Food
- ▶ Flours / spices / powdery materials
- ▶ Chemical / fertilizer / petrochemical industry
- ▶ Cement / building materials
- ▶ Consumer products

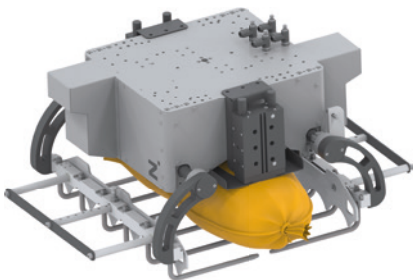


## ► TECHNICAL DATA – STANDARD

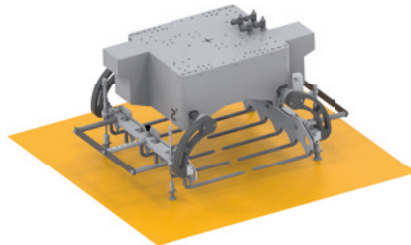
Order no.	BAG1000-137256-A	BAG1000-137855-A	BAG1000-165171-A
Type of drive	pneumatic	pneumatic	pneumatic
Connection	Robots	Robots	Robots
Movement type of the gripper	Palletizing mode	Palletizing mode	Palletizing mode
Gripper type	Form fit	Form fit	Form fit
Gripping concept	Undergrip	Undergrip	Undergrip
Gripper jaws are synchronized	Yes	Yes	Yes
Closing time / Opening time [s]	0.6 / 0.6	0.6 / 0.6	0.6 / 0.6
Query type part available	capacitive	capacitive	capacitive
Arrangement of the workpieces	Stack	Stack	Stack
Number of workpieces in the gripper	1	1	2
Workpiece length [mm]	600 - 600	700 - 700	600 - 600
Workpiece width [mm]	170 - 430	300 - 500	170 - 430
Workpiece height [mm]	75 - 150	100 - 175	75 - 150
Workpiece weight max. [kg]	25	50	25
Nominal operating pressure [bar]	6	6	6
Certifications	LABS / REACH / RoHS	LABS / REACH / RoHS	LABS / REACH / RoHS
Protection to IEC 60529	IP54	IP54	IP54
Weight [kg]	45	45	130

## ► OPTIONS

Hold-down device



Intermediate layer gripper



Pallet lifter



## ► INDIVIDUAL REQUEST



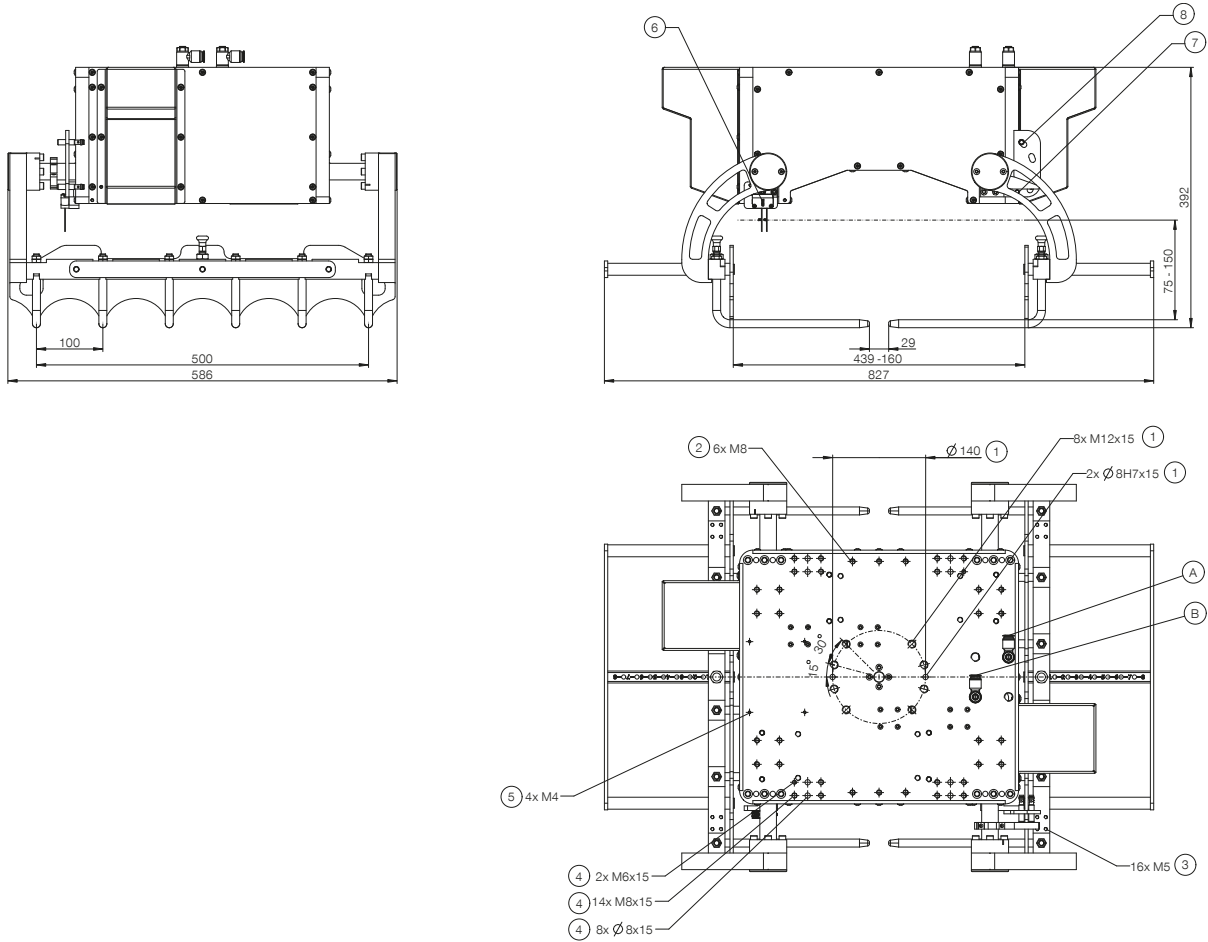
Use the checklist on our website to request your individual product.

# BAG GRIPPER

## SERIES BAG1000

### ► TECHNICAL DRAWING

BAG1000-137256-A

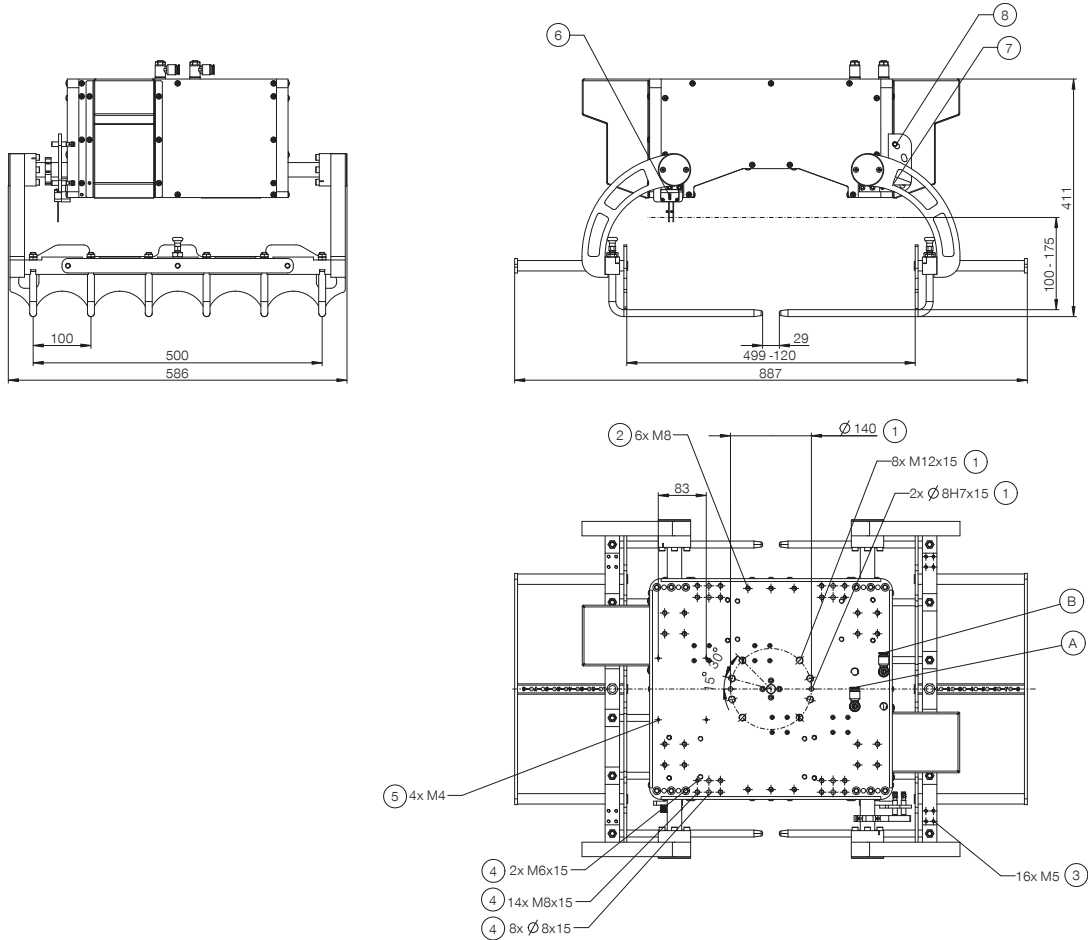


Workpiece weight max. [kg] 25

- ① Gripper attachment
- ② Fixing hold-down device
- ③ Fastening intermediate layer lifter
- ④ Pallet lifter attachment
- ⑤ Fastening pneumatic valve
- ⑥ Sensor (workpiece available)
- ⑦ Sensor (gripper closed)
- ⑧ Sensor (gripper open)
- A) Air connection (open)
- B) Air connection (close)

## ▶ TECHNICAL DRAWING

BAG1000-137855-A



Workpiece weight max. [kg] 50

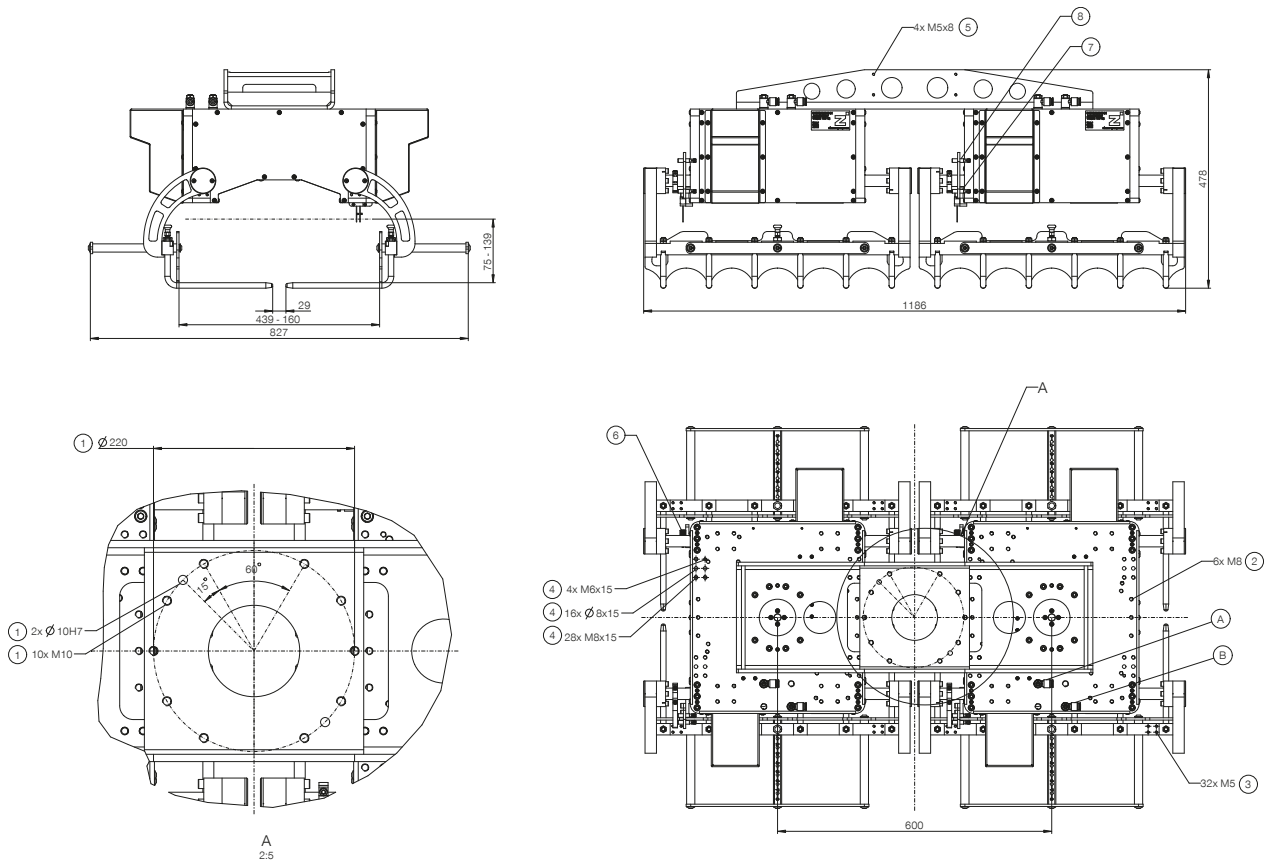
- |                                       |                                |
|---------------------------------------|--------------------------------|
| ① Gripper attachment                  | ⑥ Sensor (workpiece available) |
| ② Fixing hold-down device             | ⑦ Sensor (gripper closed)      |
| ③ Fastening intermediate layer lifter | ⑧ Sensor (gripper open)        |
| ④ Pallet lifter attachment            | Ⓐ Air connection (open)        |
| ⑤ Fastening pneumatic valve           | Ⓑ Air connection (close)       |

# BAG GRIPPER

## SERIES BAG1000

### ► TECHNICAL DRAWING

BAG1000-165171-A



Workpiece weight max. [kg] 25

- |                                       |                                |
|---------------------------------------|--------------------------------|
| ① Gripper attachment                  | ⑥ Sensor (workpiece available) |
| ② Fixing hold-down device             | ⑦ Sensor (gripper closed)      |
| ③ Fastening intermediate layer lifter | ⑧ Sensor (gripper open)        |
| ④ Pallet lifter attachment            | Ⓐ Air connection (open)        |
| ⑤ Fastening pneumatic valve           | Ⓑ Air connection (close)       |