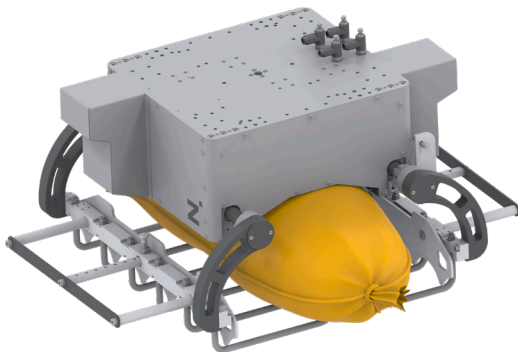


BAG GRIPPER

BAG

► PRODUCT ADVANTAGES



- Rigid, durable and fast bag gripper for end-of-line pick and place or palletizing solution
- Modular gripper which handles a variety of bags and materials
- Easily adaptable, ready-to-install accessories provide efficiency and increased productivity
- Lightweight and ready-to-mount solutions can help get projects done faster
- Proven industry-standard solution ensures longevity, uptime- and easy maintenance

► SERIES CHARACTERISTICS



IP54



Pneumatic



External gripping



Gripper jaws are synchronized



Gripping force safety device for pressure maintenance

► CHALLENGE AND SOLUTION

- Long life and low maintenance thanks to synchronous drive via gear pinion mechanism
- Fast cycle time for high productivity with powerful drive cylinders for fast cycle times
- Short changeover times even with different items thanks to flexibly adjustable gripper jaws
- Various jaw materials and shapes allow a wide range of applications, regardless of the bag material and contents
- Modular accessories for various process steps – such as top pressure units or grippers for intermediate layers and pallets, etc.
- High rigidity and holding force with the pressure holding mechanism ensure adequate pressure when gripping workpieces
- Mechanical cover for entire mechanism allows use in dusty and humid environments

► WORKPIECE PARAMETERS

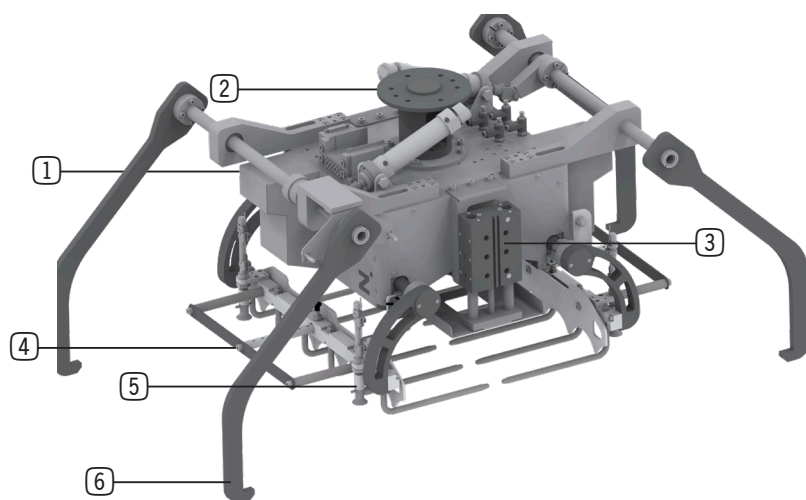
- Workpiece weight up to 50 kg
- Length: 600-700 mm
- Width: 170-540 mm
- Height: 75-175 mm

► BAG GRIPPER APPLICATIONS

- Food
- Flours / spices / powdery materials
- Chemical-, fertilizer-, and petrochemical industries
- Cement and building materials
- Consumer products



► BENEFITS IN DETAIL



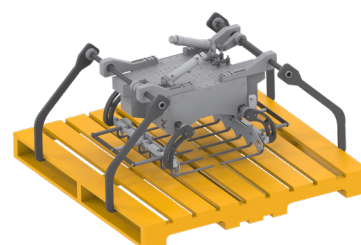
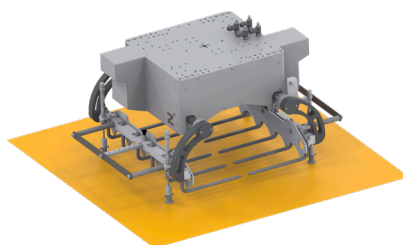
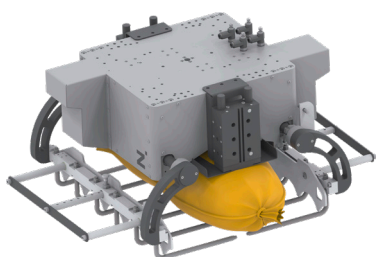
- ① Accessories: Valve terminal
- ② Accessories: Robot connecting flange
- ③ Accessories: Hold-down device (height 75-150 mm)
- ④ Adjustable jaw (width 170-430 mm)
- ⑤ Accessories: Intermediate layer gripper
- ⑥ Accessories: Pallet lifter

► MORE INFORMATION/CROSS REFERENCES

► Hold-down device
Z135374 and Z137857

► Intermediate layer gripper
Z135343

► Pallet lifter
Z135371



► TECHNICAL DATA - STANDARD

| | Unit | Workpiece weight max. | Workpiece dimensions max. (L x W x H) | Workpiece dimensions min. (L x W x H) | System weight max. | Closing time/Opening time |
|------------------|--------------------|-----------------------|---------------------------------------|---------------------------------------|--------------------|---------------------------|
| Order no. | | [kg] | [mm] | [mm] | [kg] | [sec] |
| BAG137256 | Bag gripper | 25 | 600 x 430 x 150 | 600 x 170 x 75 | 45 | 0.6 |
| BAG137855 | Bag gripper | 50 | 700 x 500 x 175 | 700 x 300 x 100 | 55 | 0.6 |
| BAG165171 | Double bag gripper | 25+25 | 600 x 430 x 150 + 600 x 430 x 150 | 600 x 170 x 75 + 600 x 170 x 75 | 115 | 0.6 |

► TECHNICAL DATA - OPTIONS

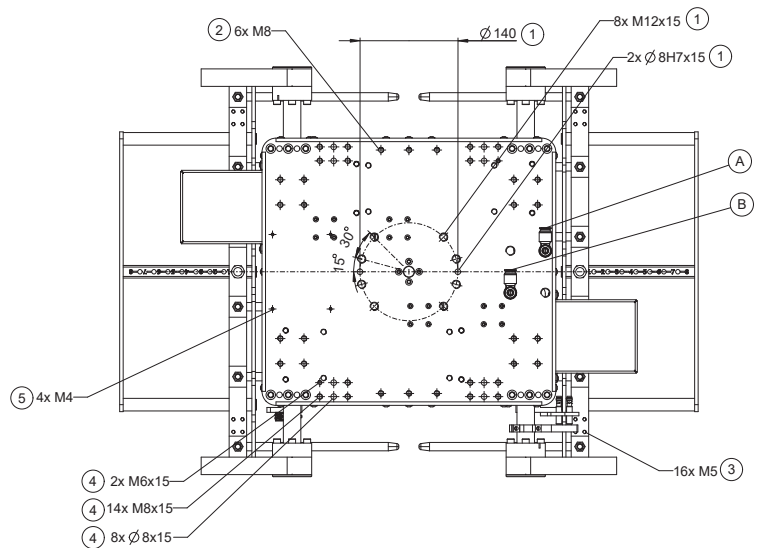
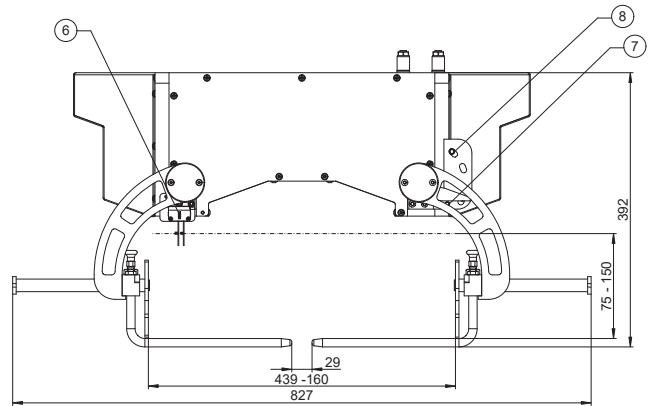
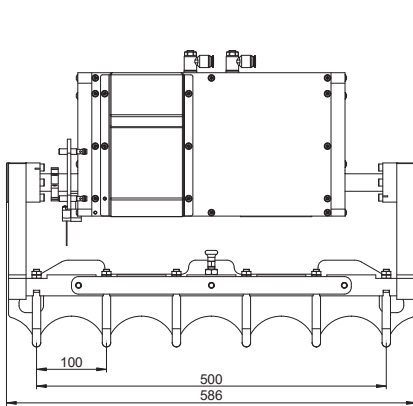
| | Unit | Workpiece weight max. | Workpiece dimensions max. (L x W x H) | Workpiece dimensions min. (L x W x H) | System weight max. | Closing time/Opening time |
|----------------------------------|---|-----------------------|---------------------------------------|---------------------------------------|--------------------|---------------------------|
| Order no. | | [kg] | [mm] | [mm] | [kg] | [sec] |
| Z135374 | Hold-down device [Accessory] | 25 | 600 x 430 x 150 | 600 x 170 x 75 | 15 | 0.5 |
| Z137857 | Hold-down device [Accessory] | 50 | 700 x 500 x 175 | 700 x 300 x 100 | 15 | 0.5 |
| Z135343 | Intermediate layer gripper [Accessory] | - | 1200 x 1200 | 1000 x 1000 | 5 | 0.5 |
| Z135371 | Pallet lifter [Accessory] | - | 1200 x 1200 | 1000 x 1000 | 30 | 2 |
| Z165169* (on request) | Robot adapter Plate type | - | - | - | 3 | N/A |
| Z165170* (on request) | Robot adapter Structure type | - | - | - | 5.5 | N/A |
| Z165147** (on request) | Pneumatic arrangements (valve, banks, etc.) | - | - | - | - | - |

* Z165169 and Z165170 as reference numbers. Specific numbers for respective robot on request.

** Z165147 as reference number. Specific numbers for different combinations on request.

► TECHNICAL DRAWINGS

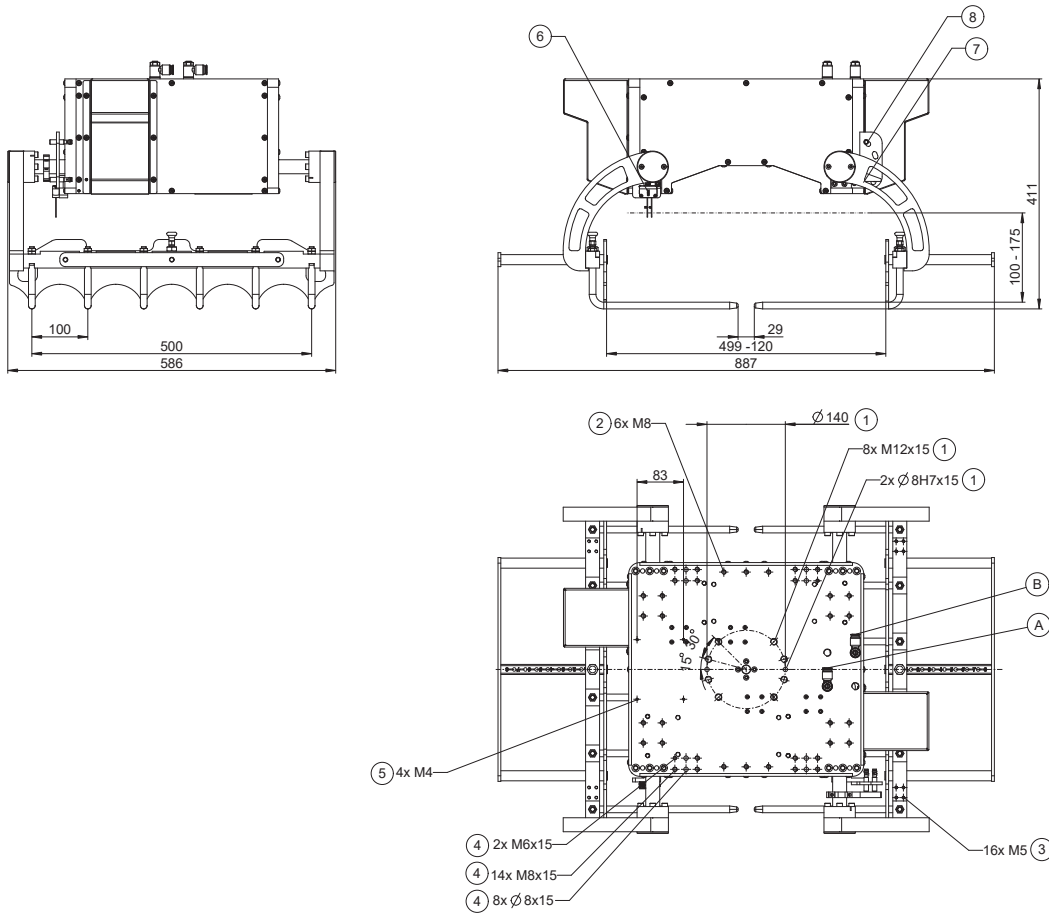
BAG137256



- ① Attachment gripper
- ② Attachment Hold-down device
- ③ Attachment Intermediate layer gripper
- ④ Attachment Pallet lifter
- ⑤ Attachment Pneumatic valve/Valve bank
- ⑥ Sensor (Component present)
- ⑦ Sensor (Gripper closed)
- ⑧ Sensor (Gripper opened)
- A Air Connection (Open)
- B Air Connection (Closed)

► TECHNICAL DRAWINGS

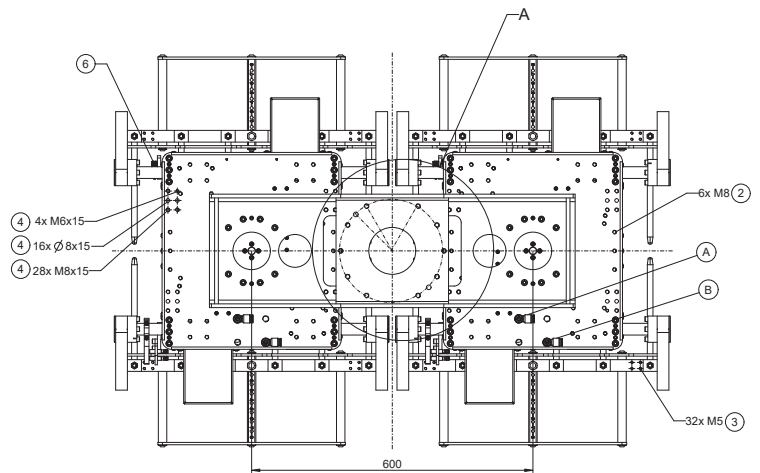
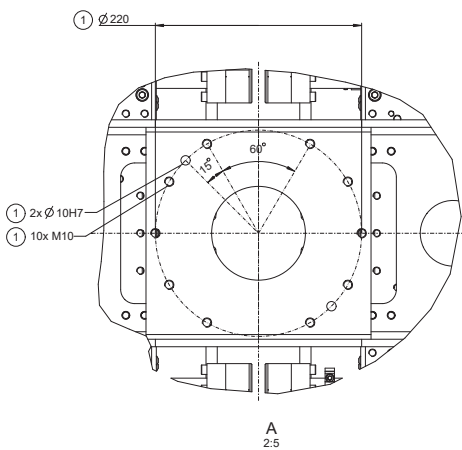
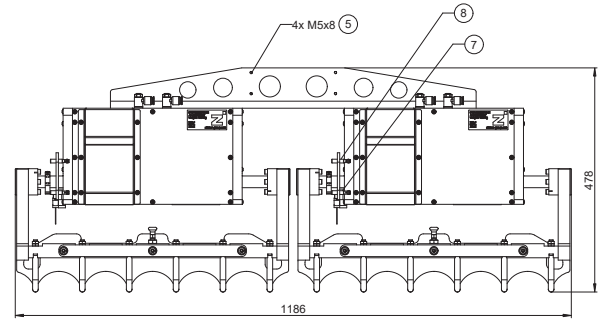
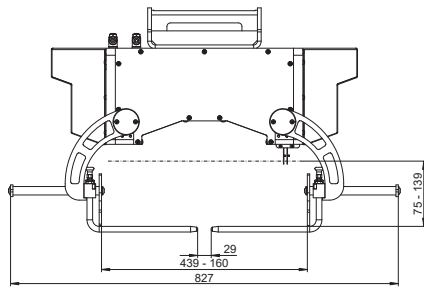
BAG137855



- ① Attachment gripper
- ② Attachment Hold-down device
- ③ Attachment Intermediate layer gripper
- ④ Attachment Pallet lifter
- ⑤ Attachment Pneumatic valve/Valve bank
- ⑥ Sensor (Component present)
- ⑦ Sensor (Gripper closed)
- ⑧ Sensor (Gripper opened)
- A Air Connection (Open)
- B Air Connection (Closed)

► TECHNICAL DRAWINGS

BAG165171



- ① Attachment gripper
- ② Attachment Hold-down device
- ⑤ Attachment Pneumatic valve/Valve bank
- ⑥ Sensor (Component present)
- ⑦ Sensor (Gripper closed)
- ⑧ Sensor (Gripper opened)
- A Air Connection (Open)
- B Air Connection (Close)