

BRIDGE COMMUNICATION MODULE

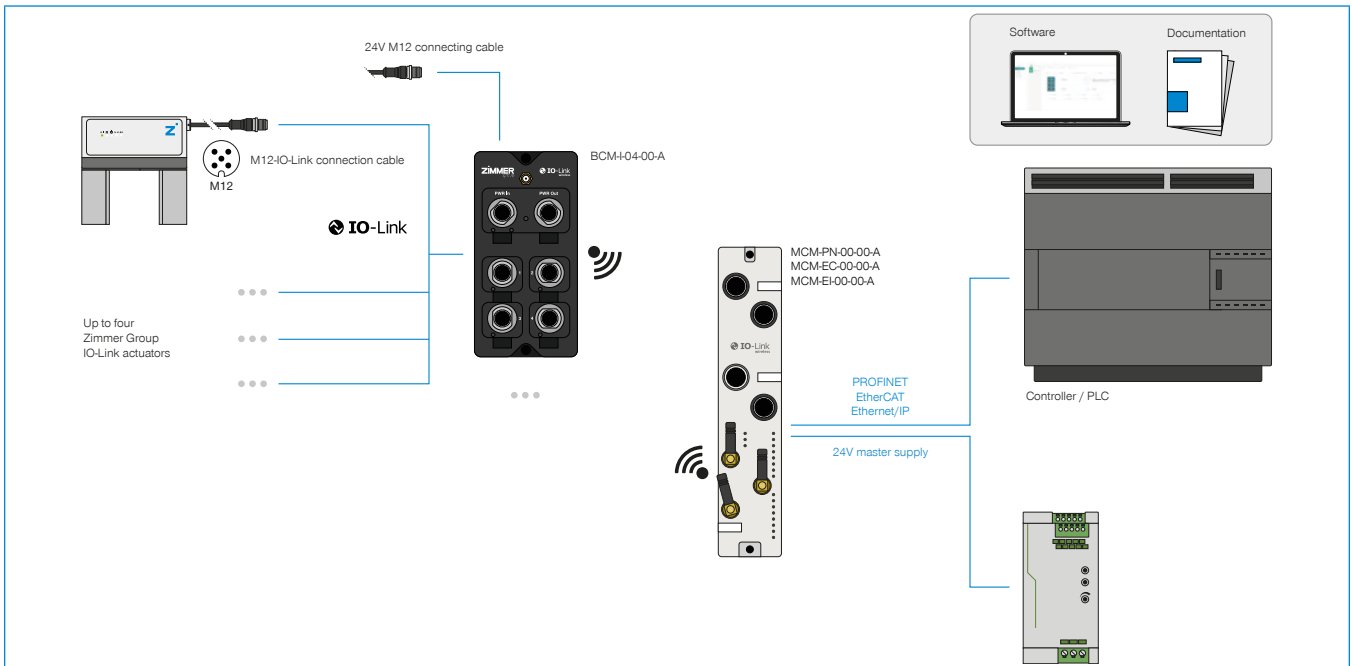
BCM-I-04-00-A

▶ PRODUCT SPECIFICATIONS



- ▶ All Zimmer Group IO-Link components can be used, regardless of the structure of the existing robot / system base
- ▶ No complex cable routing through the robot or system (slip rings, contact elements etc. not required)
- ▶ No source of error due to moving data cable (mechanical obstacle, broken wire) wearing part eliminated
- ▶ Wireless range of point-to-point communication up to 10 m, up to 30 m with unobstructed view
- ▶ 2 advanced grippers, 4 basic grippers or 6 digital devices
- ▶ Industrial design
- ▶ IP65 certified

▶ DEVICE CONNECTIVITY



▶ RECOMMENDED ACCESSORIES

CONNECTIONS / OTHER



CSTE01604
Straight connecting cable 2 m - M12 socket, 5-pin, L-coded



CONNECTIONS / OTHER



CELE03175
TigoEngine



CSTE01877
Straight connection cable 5 m - M12 socket, 5-pin, L-coded



Order no.	► Technical Data
Control	IO-Link wireless
Number of grippers, max.	4
IO-Link class	Class A/B
IO-Link version	1.1
Frequency range [GHz]	2.4
Antenna	SMA screw connector
Supply voltage [V DC]	18 ... 32
Continuous current load supply [A]	2
Load supply peak current [A]	4
Supported transmission protocol	COM 3
Mounting options	Screw mounting
Operating temperature [°C]	-25 ... +60
Protection to IEC 60529	IP65
Weight [g]	222

PWR IN	PIN	SIGNAL
	1	1L
	2	2M
	3	1M
	4	2L
	5	FE

PWR OUT	PIN	SIGNAL
	1	1L
	2	2M
	3	1M
	4	2L
	5	FE

1 / 2	PIN	SIGNAL
	1	1L
	2	2L
	3	1M
	4	IO-Link C/Q
	5	2M

3 / 4	PIN	SIGNAL
	1	1L
	2	DO/DI
	3	1M
	4	IO-Link C/Q
	5	N.C.

PWR IN	PIN	SIGNAL
	1	1L
	2	2M
	3	1M
	4	2L
	5	FE

PWR OUT	PIN	SIGNAL
	1	1L
	2	2M
	3	1M
	4	2L
	5	FE

1 / 2	PIN	SIGNAL
	1	1L
	2	2L
	3	1M
	4	IO-Link C/Q
	5	2M

3 / 4	PIN	SIGNAL
	1	1L
	2	DO/DI
	3	1M
	4	IO-Link C/Q
	5	N.C.

