

# CLAMPING AND BRAKING ELEMENTS

## INDIVIDUALIZATION STAINLESS-STEEL DESIGN

### ► SPECIFICATIONS COMPARED TO STANDARD PRODUCT



- Stainless steel version
- Use of special greases

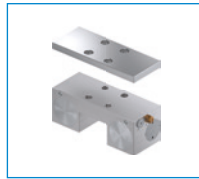
### ► CUSTOMIZABLE SERIES



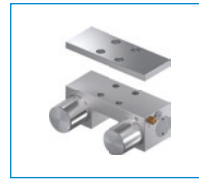
**Series HK**  
Clamping element



**Series HKR**  
Clamping element



**Series MK**  
Clamping element



**Series MKS**  
Clamping element



**Series MKRS**  
Clamping element

### ► APPLICATION DESCRIPTION

- By using stainless steel for all components that are exposed to external influences, clamping elements can also be used in areas with special hygiene or cleaning requirements.
- Cleanroom certification extends the range of applications accordingly.