

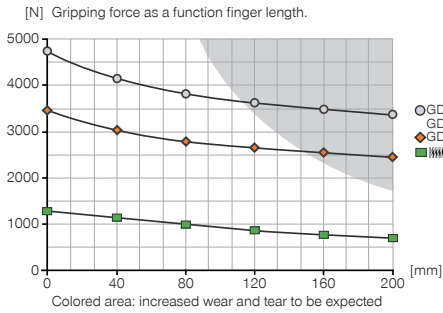
3-JAW CONCENTRIC GRIPPERS

INSTALLATION SIZE GD1716

▶ PRODUCT SPECIFICATIONS

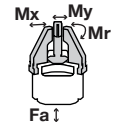


▶ Gripping force diagram



▶ Forces and moments

Displays static forces and moments that can also have an effect, besides the gripping force.



Mr	95
Mx	100
My	85
Fa	5200

▶ INCLUDED IN DELIVERY



Mounting block

KB8-46



Centering Disc

DST41600



Switch cam + screws

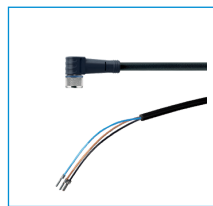
SN0004

▶ RECOMMENDED ACCESSORIES



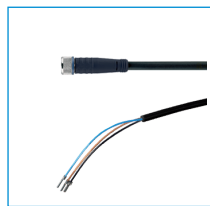
Straight Fittings - Quick Connect Style

GV1-8X6



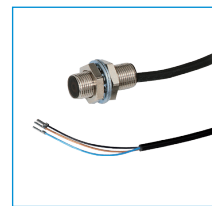
Plug-in connector Angled Cable 5m - Socket M8 (female)

KAW500



Plug-in connector Straight Cable 5m - Socket M8 (female)

KAG500



Inductive proximity switch - Cable 5 m

NJ8-E2



Inductive proximity switch - Connector M8

NJ8-E2S



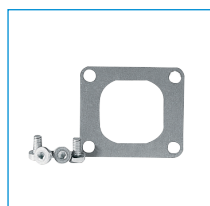
Universal Jaw Aluminium

UB1716



Universal Jaw Steel

UB1716ST



Cover plate

ADB1716-B



Pressure piece N / S

ADS1716N-S



Pressure piece N / S

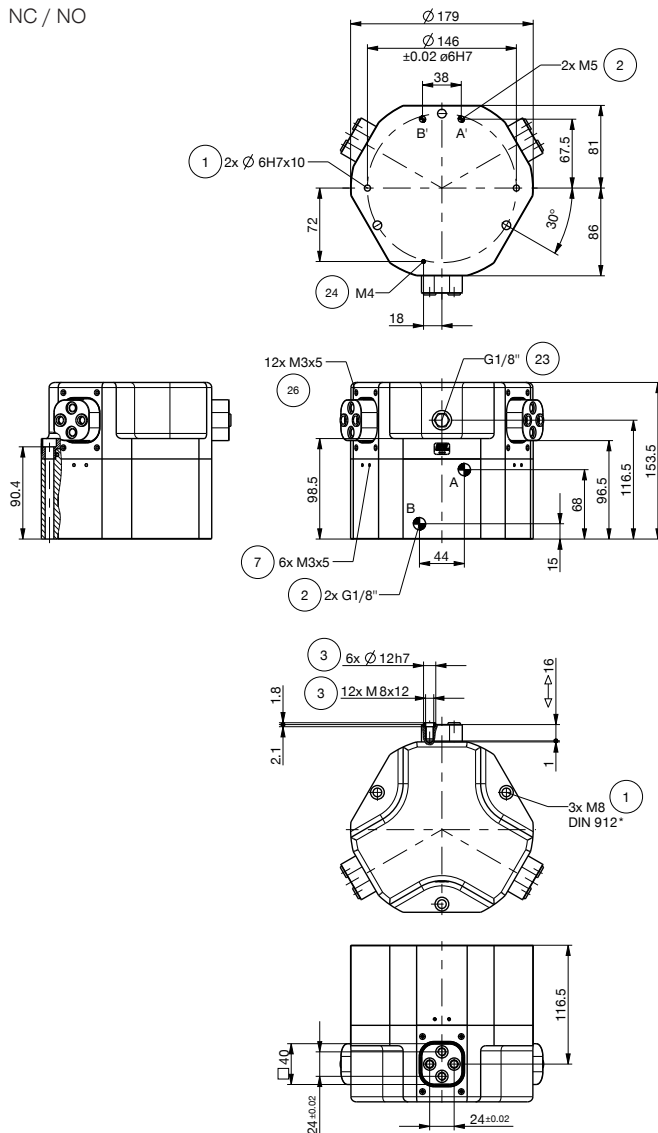
ADS1716C-O

Order no.	► Technical Data*		
	GD1716N-B	GD1716NC-B	GD1716NO-B
Stroke per jaw [mm]	16	16	16
Gripping force in closing [N]**	3500	4700	-
Gripping force in opening [N]**	3500	-	4700
Gripping force secured by spring min. [N]	-	1200	1200
Closing time [s]	0.3	0.4	0.4
Opening time [s]	0.3	0.4	0.4
Repetition accuracy +/- [mm]	0.05	0.05	0.05
Operating pressure min. [bar]	3	5	5
Operating pressure max. [bar]	8	8	8
Operating temperature min. [°C]	5	5	5
Operating temperature max. [°C]	80	80	80
Air volume per cycle [cm³]	465	750	750
Weight [kg]	6.5	8.5	8.5

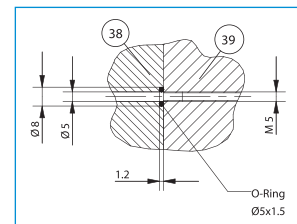
*All data measured at 6 bar

**

NC / NO



- ① Gripper attachment
- ② Energy supply
- ③ Fixing for gripper finger
- ⑦ Fixing for mounting block
- ②③ Ventilation or purged air connection
- ②④ Ventilation or purged air connection (alternate)
- ②⑥ Fixing plate
- ③⑧ Adapter
- ③⑨ Gripper
- Ⓐ Air connection (close)
- Ⓑ Air connection (open)
- Ⓐ Air connection, alternative (close)
- Ⓑ Air connection, alternative (open)



Hoseless air feed-through

