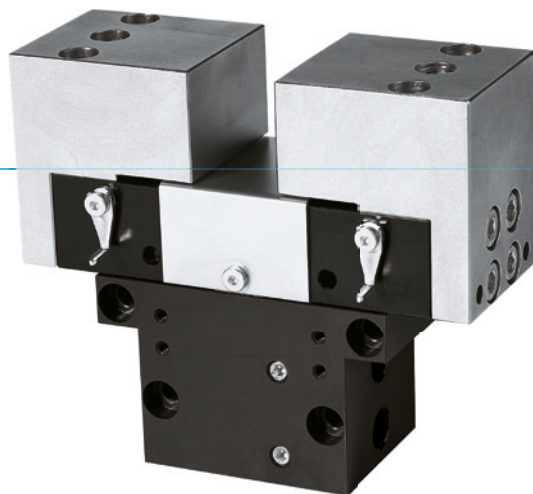


2-JAW PARALLEL GRIPPERS

SERIES GP

▶ PRODUCT ADVANTAGES



“The enduring”

▶ Proven technology

We have more than 20 years of proven reliability, which ensures uninterrupted production for you

▶ Very short cycle times

Low-friction circular guides enable very short cycle times and, therefore, high component output for your machine

▶ Failure-free continuous operation

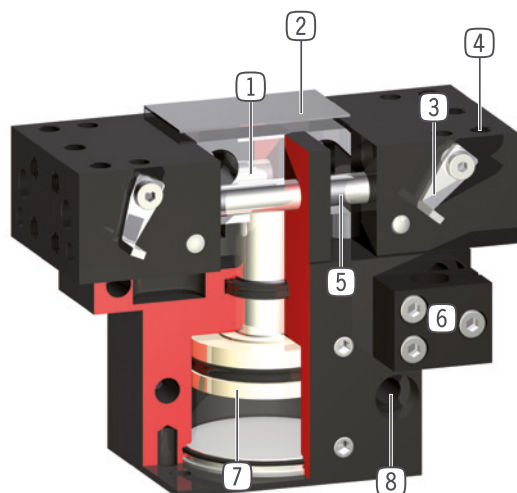
Our uncompromising “Made in Germany” quality guarantees up to 10 million maintenance-free cycles

▶ SERIES CHARACTERISTICS

Installation size	Version	
GPXXX	-	S
Spring closing C		•
High-strength S		•
10 million maintenance-free cycles (max.)	•	•
Inductive sensor	•	•
IP30	•	•



► BENEFITS IN DETAIL



- ① **Wedge hook mechanism**
 - synchronized the movement of the gripper jaws
 - high force transfer
- ② **Adjustable switch cam**
 - for protection of the guide and mechanics (from GP45)
- ③ **Adjustable switch cam**
 - for protection of the gripper mounting
- ④ **Roller jaw**
 - for individual gripping and finger sequencing
- ⑤ **Roller block**
 - for lowering the inactive sequence
- ⑥ **Mounting block**
 - double acting pneumatic cylinder switch
- ⑦ **Mounting and positioning**
 - double acting pneumatic cylinder for versatile positioning
- ⑧ **Mounting and positioning**
 - mounting and positioning of various fields of use

► TECHNICAL DATA

Installation size	Stroke per jaw [mm]	Gripping force [N]	Weight [kg]	IP class
GP12	3	8,4	0,033	IP30
GP19	4	36	0,081	IP30
GP30	5	94	0,15	IP30
GP45	5	118 - 190	0,255 - 0,3	IP30
GP75	10	220 - 275	0,45 - 0,5	IP30
GP100	8 - 13	450 - 5250	1,3	IP30

► FURTHER INFORMATION IS AVAILABLE ONLINE

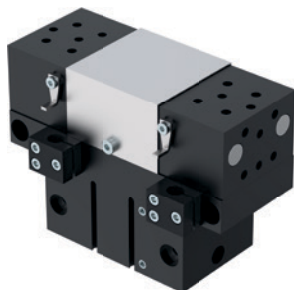


All information just a click away at: www.zimmer-group.com. Find data, illustrations, 3D models and operating instructions for your installation size using the order number for your desired product. Quick, clear and always up-to-date.

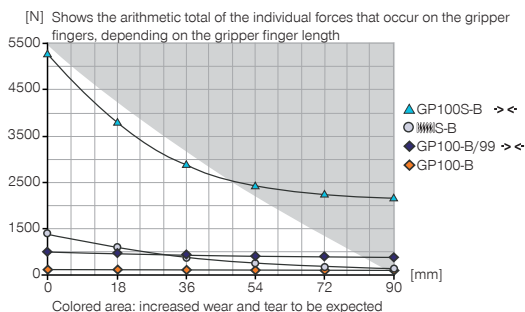
2-JAW PARALLEL GRIPPERS

INSTALLATION SIZE GP100

▶ PRODUCT SPECIFICATIONS

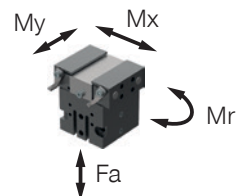


▶ Gripping force diagram



▶ Forces and moments

Displays static forces and moments that can also have an effect, besides the gripping force.



Mr [Nm]	10
Mx [Nm]	10
My [Nm]	10
Fa [N]	400

▶ INCLUDED IN DELIVERY



2 [piece]
 Mounting block
 KB8K

▶ RECOMMENDED ACCESSORIES



GRIPPING COMPONENTS



UB100
 Universal jaw set aluminium



SENSORS



NJ8-E2
 Inductive proximity switch - Cable 5 m



ENERGY SUPPLY



GV1-8X8
 Straight Fittings - Quick Connect Style



NJ8-E2S
 Inductive proximity switch - Connector M8



CONNECTIONS / OTHER



WV1-8X8
 Angled Fittings - Quick Connect Style



KAG500
 Plug-in connector Straight Cable 5m - Socket M8 (female)



DEV08
 Quick Exhaust Valve



ZE30H7X4
 Centering Disc

Order no.	► Technical data		
	GP100-B	GP100-B-99	GP100S-B
Stroke per jaw [mm]	13	13	8
Gripping force in closing [N]	450	450	5250
Gripping force in opening [N]		450	
Gripping force secured by spring min. [N]	70		250
Closing time [s]	0.05	0.04	0.05
Opening time [s]	0.05	0.04	0.05
Repetition accuracy +/- [mm]	0.05	0.05	0.05
Operating pressure min. [bar]	5	4	5
Operating pressure max. [bar]	8	8	8
Nominal operating pressure [bar]	6	6	6
Operating temperature min. [°C]	+5	+5	+5
Operating temperature max. [°C]	+80	+80	+80
Air volume per cycle [cm³]	30	30	30
Weight [kg]	1.4	1.4	1.4

