

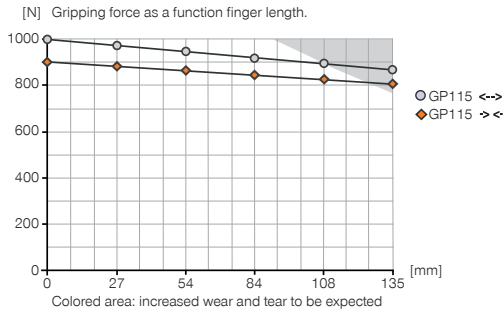
2-JAW PARALLEL GRIPPERS

INSTALLATION SIZE GP115

▶ PRODUCT SPECIFICATIONS

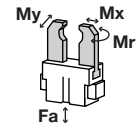


▶ Gripping force diagram



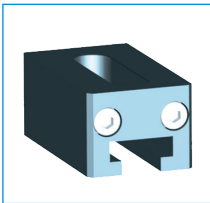
▶ Forces and moments

Displays static forces and moments that can also have an effect, besides the gripping force.



Mr	15
Mx	15
My	15
Fa	700

▶ INCLUDED IN DELIVERY



Mounting block

KB8-26



Centering Disc

DST11500

▶ RECOMMENDED ACCESSORIES



Straight Fittings - Quick Connect Style

GV1-8X8



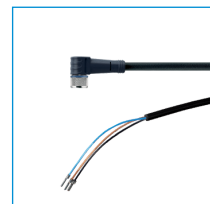
Inductive proximity switch - Cable 5 m

NJ8-E2



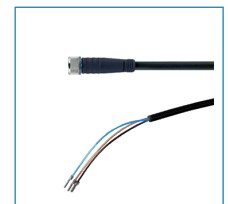
Inductive proximity switch - Connector M8

NJ8-E2S



Plug-in connector Angled Cable 5m - Socket M8 (female)

KAW500



Plug-in connector Straight Cable 5m - Socket M8 (female)

KAG500



Universal Jaw Aluminium

UB115



Universal Jaw Steel

UB115ST

Order no.		▶ Technical Data*
Stroke per jaw [mm]	15	GP115
Gripping force in closing [N]	930	
Gripping force in opening [N]	1000	
Closing time [s]	0.04	
Opening time [s]	0.04	
Repetition accuracy +/- [mm]	0.05	
Operating pressure min. [bar]	3	
Operating pressure max. [bar]	8	
Operating temperature min. [°C]	5	
Operating temperature max. [°C]	80	
Air volume per cycle [cm ³]	57	
Weight [kg]	2.3	

*All data measured at 6 bar

