

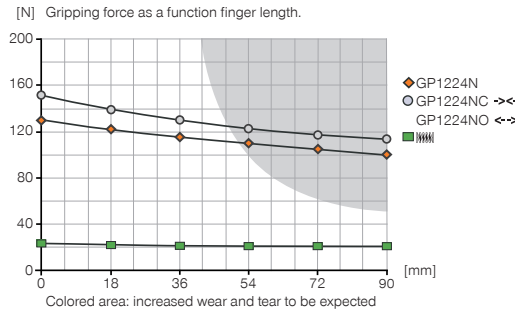
# 2-JAW PARALLEL GRIPPERS

## INSTALLATION SIZE GP1224

### ▶ PRODUCT SPECIFICATIONS

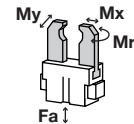


#### ▶ Gripping force diagram



#### ▶ Forces and moments

Displays static forces and moments that can also have an effect, besides the gripping force.



Mr	8
Mx	15
My	8
Fa	250

### ▶ INCLUDED IN DELIVERY



Mounting block

KB6.5-01



Centering Disc

DST40600



Switch cam + screws

SN0005



Stroke adjustment screw

HES0004

### ▶ RECOMMENDED ACCESSORIES



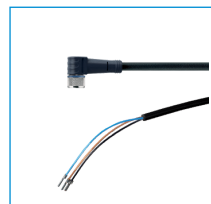
Inductive proximity switch  
- Cable 5 m

NJ6.5-E2-01



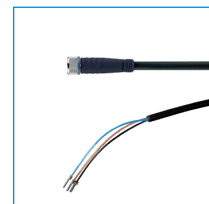
Inductive proximity switch  
- Connector M8

NJ6.5-E2S



Plug-in connector Angled  
Cable 5m - Socket M8  
(female)

KAW500



Plug-in connector Straight  
Cable 5m - Socket M8  
(female)

KAG500



Magnetic field sensor  
Angled Cable 5 m

MFS103KHC



Magnetic field sensor Angled  
Cable 0,3 m - Connector M8

MFS103SKHC



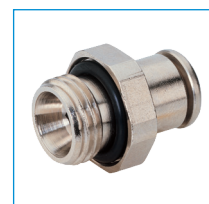
Magnetic field sensor  
Straight Cable 5 m

MFS204KHC



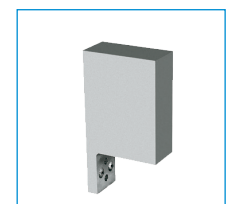
Magnetic field sensor Straight  
Cable 0,3 m - Connector M8

MFS204SKHC



Straight Fittings - Quick  
Connect Style

GVM5



Universal Jaw Aluminium

UB1224

Order no.	▶ Technical Data*		
	GP1224N	GP1224NC	GP1224NO
Stroke per jaw [mm]	12	12	12
Gripping force in closing [N]	130	155	-
Gripping force in opening [N]	130	-	155
Gripping force secured by spring min. [N]	-	25	25
Closing time [s]	0.04	0.05	0.05
Opening time [s]	0.04	0.05	0.05
Repetition accuracy +/- [mm]	0.05	0.05	0.05
Operating pressure min. [bar]	3	5	5
Operating pressure max. [bar]	8	8	8
Operating temperature min. [°C]	5	5	5
Operating temperature max. [°C]	80	80	80
Air volume per cycle [cm³]	12	17.5	17.5
Weight [kg]	0.48	0.55	0.55

\*All data measured at 6 bar

