

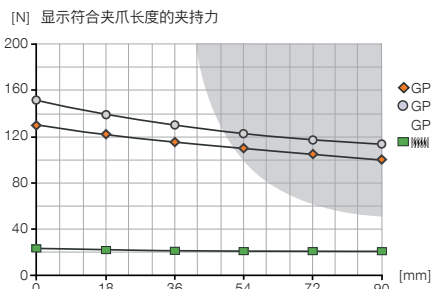
2指平行抓手

安装尺寸 GP1224

产品规格

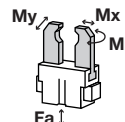


夹持力图表



力和扭矩

显示除夹持力外可能作用的静力和力矩。



Mr	8
Mx	15
My	8
Fa	250

包含在供货范围内



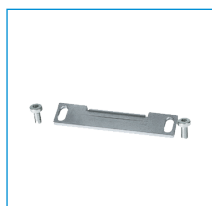
安装块

KB6.5-01



定位环

DST40600



接近开关检测快+螺丝

SN0005



行程调节螺丝

HES0004

配件建议



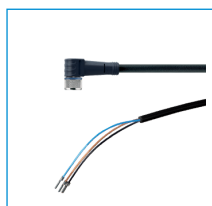
接近开关 - 电缆 5 m

NJ6.5-E2-01



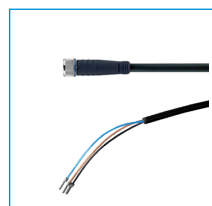
接近开关 - M8连接头

NJ6.5-E2S



插入式弯角接头电缆 5 m - M8插头(母头)

KAW500



插入式直连接头电缆 5 m - M8插头(母头)

KAG500



磁性传感器弯头电缆 5 m

MFS103KHC



磁性传感器弯头电缆0.3 m - M8连接头

MFS103SKHC



磁性传感器直电缆 5 m

MFS204KHC



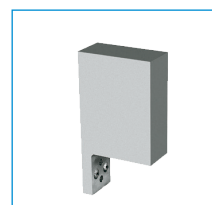
磁性传感器直电缆0.3 m - M8连接头

MFS204SKHC



直插接头-快接式

GVM5



通用铝手指

UB1224

