

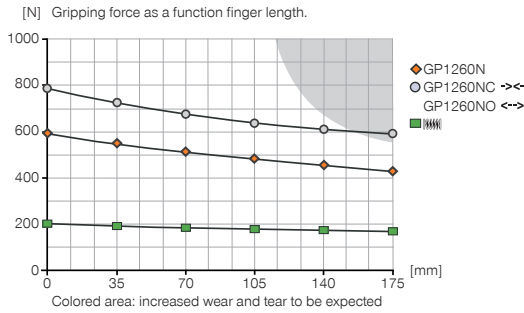
# 2-JAW PARALLEL GRIPPERS

## INSTALLATION SIZE GP1260

### ▶ PRODUCT SPECIFICATIONS

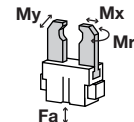


#### ▶ Gripping force diagram



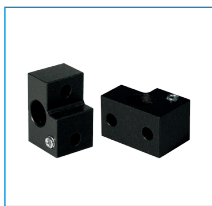
#### ▶ Forces and moments

Displays static forces and moments that can also have an effect, besides the gripping force.



Mr	25
Mx	45
My	25
Fa	600

### ▶ INCLUDED IN DELIVERY



Mounting block

KB8-07



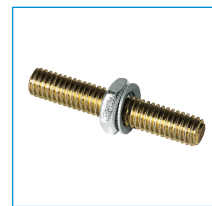
Centering Disc

BDST40800



Switch cam + screws

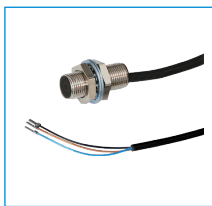
SN0007



Stroke adjustment screw

HES0005

### ▶ RECOMMENDED ACCESSORIES



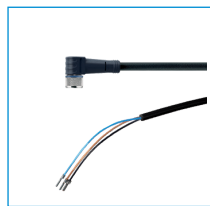
Inductive proximity switch  
- Cable 5 m

NJ8-E2



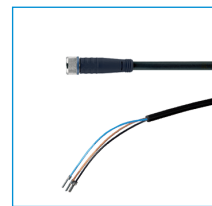
Inductive proximity switch  
- Connector M8

NJ8-E2S



Plug-in connector Angled  
Cable 5m - Socket M8  
(female)

KAW500



Plug-in connector Straight  
Cable 5m - Socket M8  
(female)

KAG500



Magnetic field sensor  
Angled Cable 5 m

MFS103KHC



Magnetic field sensor Angled  
Cable 0,3 m - Connector M8

MFS103SKHC



Magnetic field sensor  
Straight Cable 5 m

MFS204KHC



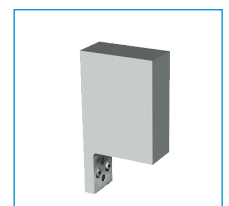
Magnetic field sensor Straight  
Cable 0,3 m - Connector M8

MFS204SKHC



Straight Fittings - Quick  
Connect Style

GV1-8X8



Universal Jaw Aluminium

UB1260

Order no.	▶ Technical Data*		
	GP1260N	GP1260NC	GP1260NO
Stroke per jaw [mm]	30	30	30
Gripping force in closing [N]	580	780	-
Gripping force in opening [N]	580	-	780
Gripping force secured by spring min. [N]	-	200	200
Closing time [s]	0.09	0.15	0.15
Opening time [s]	0.09	0.15	0.15
Repetition accuracy +/- [mm]	0.05	0.05	0.05
Operating pressure min. [bar]	3	5	5
Operating pressure max. [bar]	8	8	8
Operating temperature min. [°C]	5	5	5
Operating temperature max. [°C]	80	80	80
Air volume per cycle [cm³]	115	145	145
Weight [kg]	3.9	4.2	4.2

\*All data measured at 6 bar

