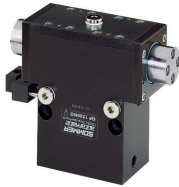


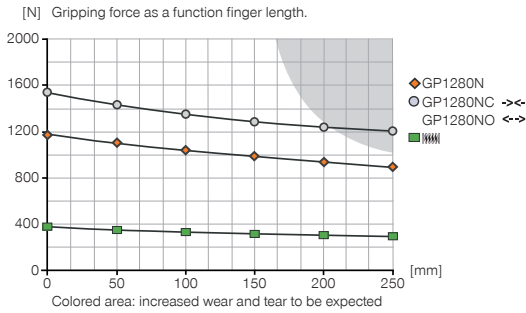
2-JAW PARALLEL GRIPPERS

INSTALLATION SIZE GP1280

▶ PRODUCT SPECIFICATIONS

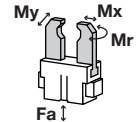


▶ Gripping force diagram



▶ Forces and moments

Displays static forces and moments that can also have an effect, besides the gripping force.



Mr	40
Mx	75
My	40
Fa	1000

▶ INCLUDED IN DELIVERY



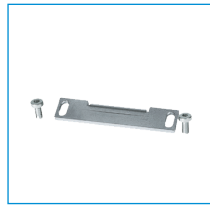
Mounting block

KB8-07



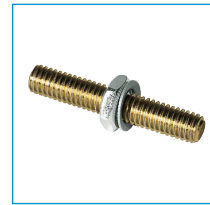
Centering Disc

DST41600



Switch cam + screws

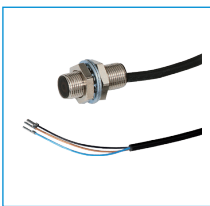
SN0007



Stroke adjustment screw

HES0014

▶ RECOMMENDED ACCESSORIES



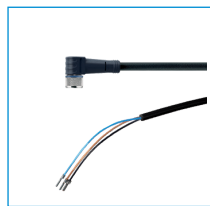
Inductive proximity switch
- Cable 5 m

NJ8-E2



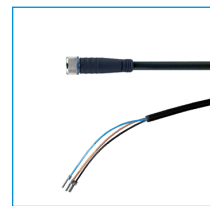
Inductive proximity switch
- Connector M8

NJ8-E2S



Plug-in connector Angled
Cable 5m - Socket M8
(female)

KAW500



Plug-in connector Straight
Cable 5m - Socket M8
(female)

KAG500



Magnetic field sensor
Angled Cable 5 m

MFS103KHC



Magnetic field sensor Angled
Cable 0,3 m - Connector M8

MFS103SKHC



Magnetic field sensor
Straight Cable 5 m

MFS204KHC



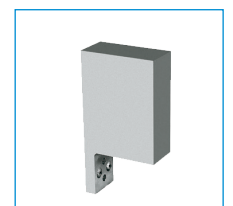
Magnetic field sensor Straight
Cable 0,3 m - Connector M8

MFS204SKHC



Straight Fittings - Quick
Connect Style

GV1-8X8



Universal Jaw Aluminium

UB1280

Order no.	▶ Technical Data*		
	GP1280N	GP1280NC	GP1280NO
Stroke per jaw [mm]	40	40	40
Gripping force in closing [N]	1160	1550	-
Gripping force in opening [N]	1160	-	1550
Gripping force secured by spring min. [N]	-	390	390
Closing time [s]	0.2	0.3	0.3
Opening time [s]	0.2	0.3	0.3
Repetition accuracy +/- [mm]	0.05	0.05	0.05
Operating pressure min. [bar]	3	5	5
Operating pressure max. [bar]	8	8	8
Operating temperature min. [°C]	5	5	5
Operating temperature max. [°C]	80	80	80
Air volume per cycle [cm³]	300	380	380
Weight [kg]	9.4	10.5	10.5

*All data measured at 6 bar

