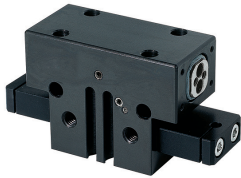


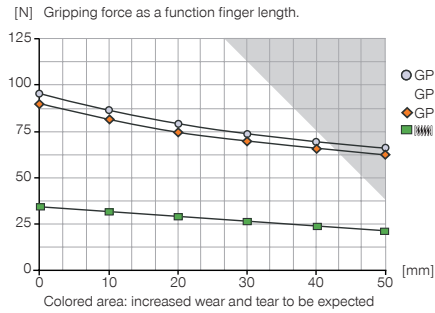
2-JAW PARALLEL GRIPPERS

INSTALLATION SIZE GP1803

▶ PRODUCT SPECIFICATIONS

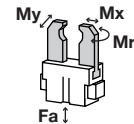


▶ Gripping force diagram



▶ Forces and moments

Displays static forces and moments that can also have an effect, besides the gripping force.



Mr	3
Mx	8
My	4
Fa	150

▶ INCLUDED IN DELIVERY



Centering Disc

DST80310

▶ RECOMMENDED ACCESSORIES



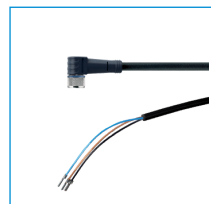
Inductive proximity switch
- Cable 5 m

NJ3-E2



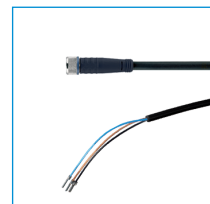
Inductive Proximity Switch
Cable 0,3 m - Connector
M8

NJ3-E2SK



Plug-in connector Angled
Cable 5m - Socket M8
(female)

KAW500



Plug-in connector Straight
Cable 5m - Socket M8
(female)

KAG500



Magnetic field sensor
Angled Cable 5 m

MFS103KHC



Magnetic field sensor Angled
Cable 0,3 m - Connector M8

MFS103SKHC



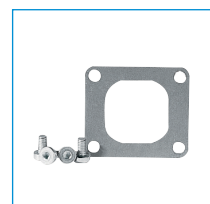
Straight Fittings - Quick
Connect Style

GVM5



Mounting block

KB1800-01



Cover plate

ADB1803-B



Switch cam + screws

SN0001

Order no.	▶ Technical Data*		
	GP1803N-B	GP1803NC-B	GP1803NO-B
Stroke per jaw [mm]	3	3	3
Gripping force in closing [N]**	85	90	-
Gripping force in opening [N]**	85	-	90
Gripping force secured by spring min. [N]	-	32	32
Closing time [s]	0.015	0.02	0.02
Opening time [s]	0.015	0.02	0.02
Repetition accuracy +/- [mm]	0.01	0.01	0.01
Operating pressure min. [bar]	3	5	5
Operating pressure max. [bar]	8	8	8
Operating temperature min. [°C]	5	5	5
Operating temperature max. [°C]	80	80	80
Air volume per cycle [cm³]	3.2	3	3
Weight [kg]	0.12	0.13	0.13

*All data measured at 6 bar

**

