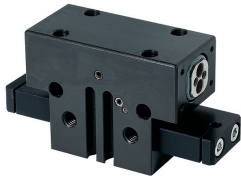


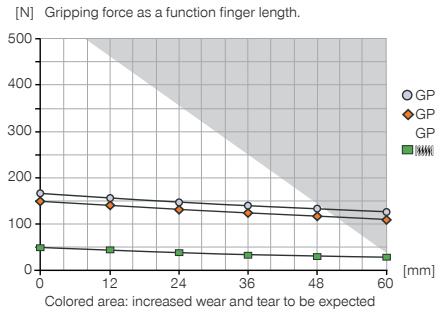
2-JAW PARALLEL GRIPPERS

INSTALLATION SIZE GP1804

▶ PRODUCT SPECIFICATIONS

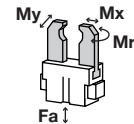


▶ Gripping force diagram



▶ Forces and moments

Displays static forces and moments that can also have an effect, besides the gripping force.



Mr	6
Mx	12
My	7
Fa	250

▶ INCLUDED IN DELIVERY



Centering Disc

DST40400

▶ RECOMMENDED ACCESSORIES



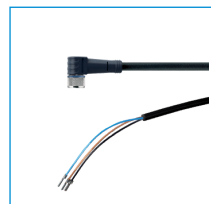
Inductive proximity switch
- Cable 5 m

NJ3-E2



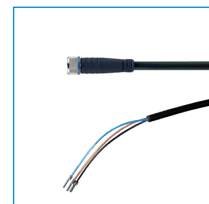
Inductive Proximity Switch
Cable 0,3 m - Connector
M8

NJ3-E2SK



Plug-in connector Angled
Cable 5m - Socket M8
(female)

KAW500



Plug-in connector Straight
Cable 5m - Socket M8
(female)

KAG500



Magnetic field sensor
Angled Cable 5 m

MFS103KHC



Magnetic field sensor Angled
Cable 0,3 m - Connector M8

MFS103SKHC



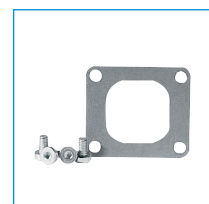
Straight Fittings - Quick
Connect Style

GVM5



Mounting block

KB1800-02



Cover plate

ADB1804-B



Switch cam + screws

SN0002

Order no.	► Technical Data*		
	GP1804N-B	GP1804NC-B	GP1804NO-B
Stroke per jaw [mm]	4	4	4
Gripping force in closing [N]**	160	155	-
Gripping force in opening [N]**	160	-	155
Gripping force secured by spring min. [N]	-	40	40
Closing time [s]	0.015	0.02	0.02
Opening time [s]	0.015	0.02	0.02
Repetition accuracy +/- [mm]	0.01	0.01	0.01
Operating pressure min. [bar]	3	5	5
Operating pressure max. [bar]	8	8	8
Operating temperature min. [°C]	5	5	5
Operating temperature max. [°C]	80	80	80
Air volume per cycle [cm³]	4.5	5	5
Weight [kg]	0.19	0.22	0.22

*All data measured at 6 bar

**

