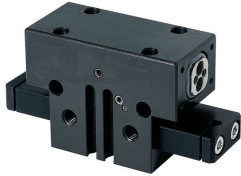


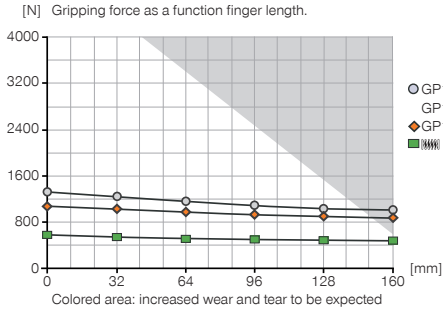
2-JAW PARALLEL GRIPPERS

INSTALLATION SIZE GP1812

▶ PRODUCT SPECIFICATIONS

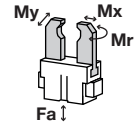


▶ Gripping force diagram



▶ Forces and moments

Displays static forces and moments that can also have an effect, besides the gripping force.



Mr	50
Mx	90
My	60
Fa	2000

▶ INCLUDED IN DELIVERY



Centering Disc

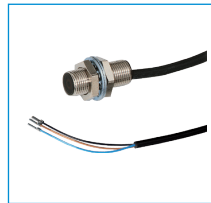
DST41000

▶ RECOMMENDED ACCESSORIES



Alternate proximity bracket

KHA1812-B-8



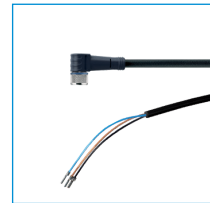
Inductive proximity switch - Cable 5 m

NJ8-E2



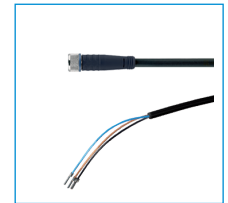
Inductive proximity switch - Connector M8

NJ8-E2S



Plug-in connector Angled Cable 5m - Socket M8 (female)

KAW500



Plug-in connector Straight Cable 5m - Socket M8 (female)

KAG500



Magnetic field sensor Angled Cable 5 m

MFS103KHC



Magnetic field sensor Angled Cable 0,3 m - Connector M8

MFS103SKHC



Magnetic field sensor Straight Cable 5 m

MFS204KHC



Magnetic field sensor Straight Cable 0,3 m - Connector M8

MFS204SKHC



Straight Fittings - Quick Connect Style

GV1-8X6

Order no.	▶ Technical Data*		
	GP1812N-B	GP1812NC-B	GP1812NO-B
Stroke per jaw [mm]	12	12	12
Gripping force in closing [N]**	1165	1400	-
Gripping force in opening [N]**	1165	-	1400
Gripping force secured by spring min. [N]	-	500	500
Closing time [s]	0.15	0.2	0.2
Opening time [s]	0.15	0.2	0.2
Repetition accuracy +/- [mm]	0.01	0.01	0.01
Operating pressure min. [bar]	3	5	5
Operating pressure max. [bar]	8	8	8
Operating temperature min. [°C]	5	5	5
Operating temperature max. [°C]	80	80	80
Air volume per cycle [cm³]	72	100	100
Weight [kg]	1.6	2.2	2.2

*All data measured at 6 bar

**

