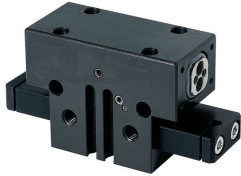


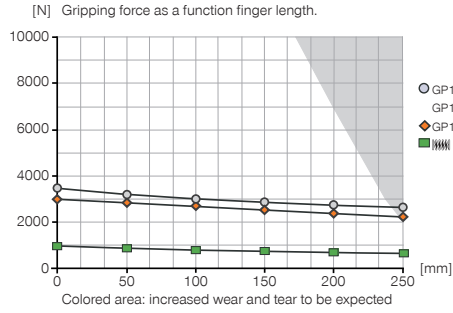
2-JAW PARALLEL GRIPPERS

INSTALLATION SIZE GP1820

▶ PRODUCT SPECIFICATIONS

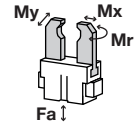


▶ Gripping force diagram



▶ Forces and moments

Displays static forces and moments that can also have an effect, besides the gripping force.



Mr	110
Mx	170
My	130
Fa	6000

▶ INCLUDED IN DELIVERY



Centering Disc

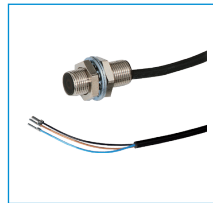
DST42000

▶ RECOMMENDED ACCESSORIES



Alternate proximity bracket

KHA1820-B-8



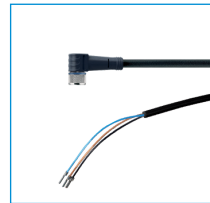
Inductive proximity switch - Cable 5 m

NJ8-E2



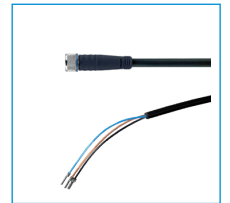
Inductive proximity switch - Connector M8

NJ8-E2S



Plug-in connector Angled Cable 5m - Socket M8 (female)

KAW500



Plug-in connector Straight Cable 5m - Socket M8 (female)

KAG500



Magnetic field sensor Angled Cable 5 m

MFS103KHC



Magnetic field sensor Angled Cable 0,3 m - Connector M8

MFS103SKHC



Magnetic field sensor Straight Cable 5 m

MFS204KHC



Magnetic field sensor Straight Cable 0,3 m - Connector M8

MFS204SKHC



Straight Fittings - Quick Connect Style

GV1-4X8

Order no.	▶ Technical Data*		
	GP1820N-B	GP1820NC-B	GP1820NO-B
Stroke per jaw [mm]	20	20	20
Gripping force in closing [N]**	3085	3200	-
Gripping force in opening [N]**	3085	-	3200
Gripping force secured by spring min. [N]	-	900	900
Closing time [s]	0.3	0.04	0.04
Opening time [s]	0.3	0.04	0.04
Repetition accuracy +/- [mm]	0.01	0.02	0.02
Operating pressure min. [bar]	3	5	5
Operating pressure max. [bar]	8	8	8
Operating temperature min. [°C]	5	5	5
Operating temperature max. [°C]	80	80	80
Air volume per cycle [cm³]	310	583	583
Weight [kg]	6	7.65	7.65

*All data measured at 6 bar

**

