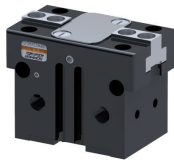


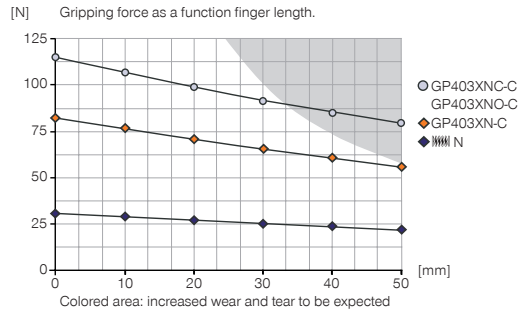
# 2-JAW PARALLEL GRIPPERS

## INSTALLATION SIZE GP403X

### ▶ PRODUCT SPECIFICATIONS

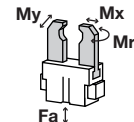


#### ▶ Gripping force diagram



#### ▶ Forces and moments

Displays static forces and moments that can also have an effect, besides the gripping force.



Mr [Nm]	6
Mx [Nm]	12
My [Nm]	12
Fa [N]	500

### ▶ INCLUDED IN DELIVERY



Mounting block

KB3-03



Centering Disc

DST40400

### ▶ RECOMMENDED ACCESSORIES



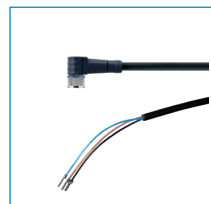
Universal Jaw Aluminium

UB403

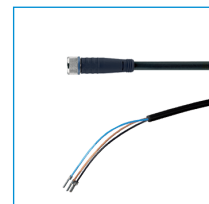


Universal Jaw Steel

UB403ST



Plug-in connector Angled Cable 5m - Socket M8 (female)  
KAW500



Plug-in connector Straight Cable 5m - Socket M8 (female)  
KAG500



Magnetic field sensor Angled Cable 5 m

MFS103KHC



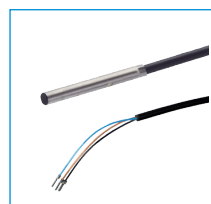
Magnetic field sensor Angled Cable 0,3 m - Connector M8

MFS103SKHC



Straight Fittings - Quick Connect Style

GVM5



Inductive proximity switch - Cable 5 m

NJ3-E2



Inductive Proximity Switch Cable 0,3 m - Connector M8

NJ3-E2SK



Quick Exhaust Valve

DEV04

Order no.	► Technical Data*		
	GP403XN-C	GP403XNC-C	GP403XNO-C
Stroke per jaw [mm]	3	3	3
Gripping force in closing [N]	85	115	-
Gripping force in opening [N]	100	-	115
Gripping force secured by spring min. [N]	-	32	32
Closing time [s]	0.015	0.01	0.02
Opening time [s]	0.015	0.02	0.01
Repetition accuracy +/- [mm]	0.01	0.01	0.01
Operating pressure min. [bar]	3	4	4
Operating pressure max. [bar]	8	8	8
Operating temperature min. [°C]	5	5	5
Operating temperature max. [°C]	80	80	80
Air volume per cycle [cm³]	1.8	3.3	3.3
Weight [kg]	0.08	0.1	0.1

\*All data measured at 6 bar

