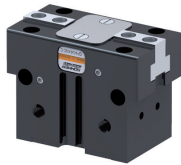


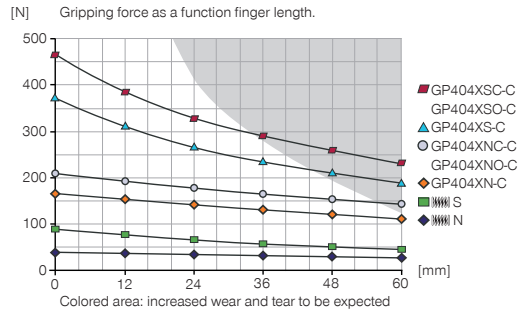
# 2-JAW PARALLEL GRIPPERS

## INSTALLATION SIZE GP404X

### ▶ PRODUCT SPECIFICATIONS

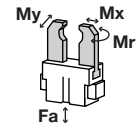


#### ▶ Gripping force diagram



#### ▶ Forces and moments

Displays static forces and moments that can also have an effect, besides the gripping force.



Mr	8
Mx	18
My	15
Fa	700

### ▶ INCLUDED IN DELIVERY



Mounting block

KB3-08



Centering Disc

DST40400

### ▶ RECOMMENDED ACCESSORIES



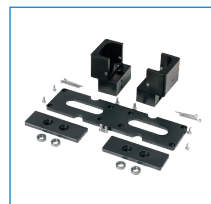
Universal Jaw Aluminium

UB404



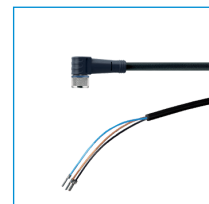
Universal Jaw Steel

UB404ST

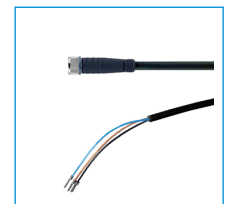


Dust protection

PR404-B



Plug-in connector Angled Cable 5m - Socket M8 (female)  
KAW500



Plug-in connector Straight Cable 5m - Socket M8 (female)  
KAG500



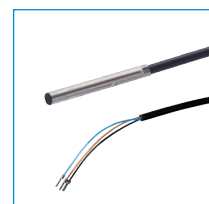
Magnetic field sensor Angled Cable 5 m  
MFS103KHC



Magnetic field sensor Angled Cable 0,3 m - Connector M8  
MFS103SKHC



Straight Fittings - Quick Connect Style  
GVM5



Inductive proximity switch - Cable 5 m  
NJ3-E2



Inductive Proximity Switch Cable 0,3 m - Connector M8  
NJ3-E2SK

Order no.	► Technical Data*					
	GP404XN-C	GP404XNC-C	GP404XNO-C	GP404XS-C	GP404XSC-C	GP404XSO-C
Stroke per jaw [mm]	4	4	4	2	2	2
Gripping force in closing [N]	170	210	-	375	465	-
Gripping force in opening [N]	185	-	225	410	-	500
Gripping force secured by spring min. [N]	-	40	40	-	90	90
Closing time [s]	0.02	0.15	0.025	0.02	0.15	0.025
Opening time [s]	0.02	0.025	0.015	0.02	0.025	0.015
Repetition accuracy +/- [mm]	0.01	0.01	0.01	0.01	0.01	0.01
Operating pressure min. [bar]	3	4	4	3	4	4
Operating pressure max. [bar]	8	8	8	8	8	8
Operating temperature min. [°C]	5	5	5	5	5	5
Operating temperature max. [°C]	80	80	80	80	80	80
Air volume per cycle [cm <sup>3</sup> ]	4.1	6.9	6.9	4.1	6.9	6.9
Weight [kg]	0.14	0.16	0.16	0.14	0.16	0.16

\*All data measured at 6 bar

