

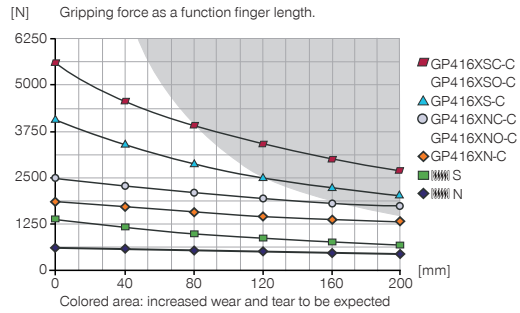
# 2-JAW PARALLEL GRIPPERS

## INSTALLATION SIZE GP416X

### ▶ PRODUCT SPECIFICATIONS

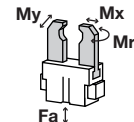


#### ▶ Gripping force diagram



#### ▶ Forces and moments

Displays static forces and moments that can also have an effect, besides the gripping force.



Mr	140
Mx	190
My	180
Fa	5000

### ▶ INCLUDED IN DELIVERY



Mounting block

KB8K



Centering Disc

DST41600

### ▶ RECOMMENDED ACCESSORIES



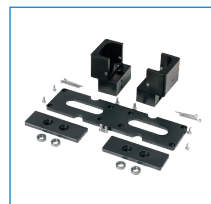
Universal Jaw Aluminium

UB416



Universal Jaw Steel

UB416ST



Dust protection

PR416-B



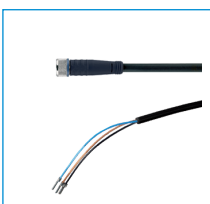
Alternate proximity bracket

KHA416-B-8



Plug-in connector Angled Cable 5m - Socket M8 (female)

KAW500



Plug-in connector Straight Cable 5m - Socket M8 (female)

KAG500



Magnetic field sensor Angled Cable 5 m

MFS103KHC



Magnetic field sensor Straight Cable 0,3 m - Connector M8

MFS103SKHC



Magnetic field sensor Straight Cable 5 m

MFS204KHC



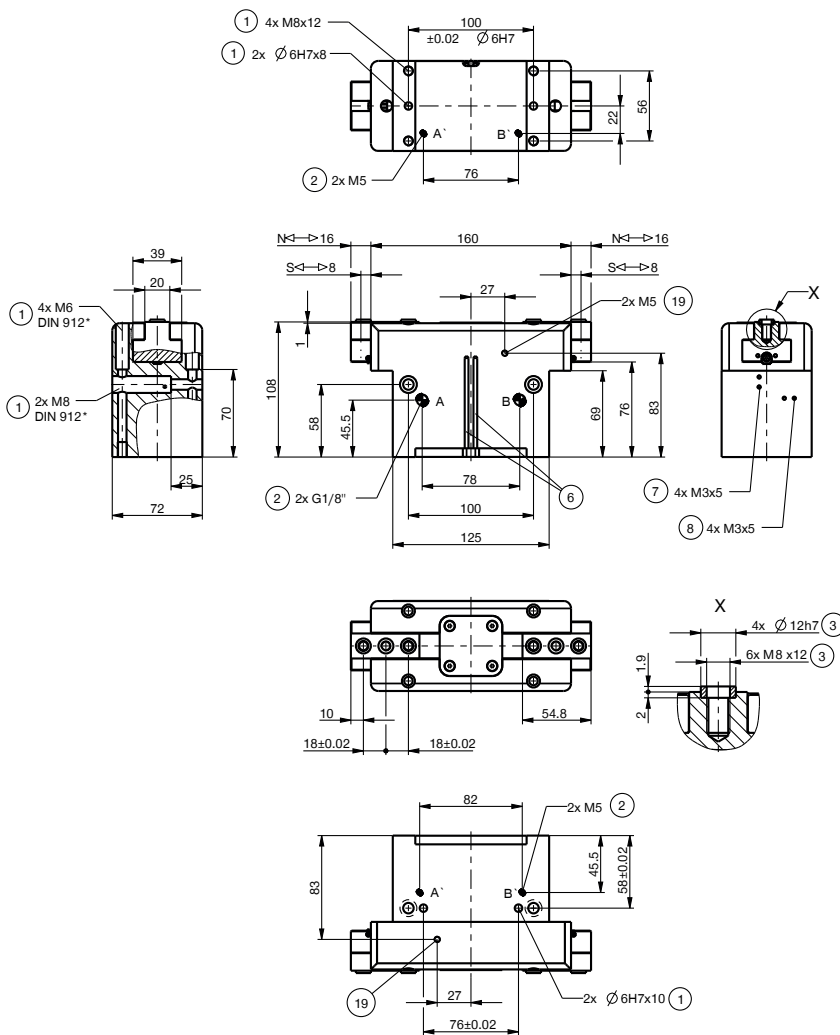
Magnetic field sensor Straight Cable 0,3 m - Connector M8

MFS204SKHC

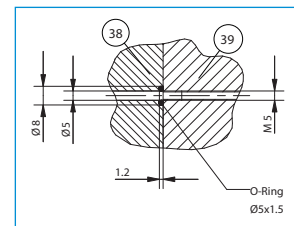
Order no.	► Technical Data*					
	GP416XN-C	GP416XNC-C	GP416XNO-C	GP416XS-C	GP416XSC-C	GP416XSO-C
Stroke per jaw [mm]	16	16	16	8	8	8
Gripping force in closing [N]	1860	2490	-	4160	5560	-
Gripping force in opening [N]	1960	-	2590	4390	-	5780
Gripping force secured by spring min. [N]	-	630	630	-	1400	1400
Closing time [s]	0.2	0.15	0.25	0.2	0.15	0.25
Opening time [s]	0.2	0.25	0.15	0.2	0.25	0.15
Repetition accuracy +/- [mm]	0.05	0.05	0.05	0.05	0.05	0.05
Operating pressure min. [bar]	3	4	4	3	4	4
Operating pressure max. [bar]	8	8	8	8	8	8
Operating temperature min. [°C]	5	5	5	5	5	5
Operating temperature max. [°C]	80	80	80	80	80	80
Air volume per cycle [cm³]	268	477	477	268	477	477
Weight [kg]	2.9	3.4	3.4	2.9	3.4	3.4

\*All data measured at 6 bar

NC / NO / SC / SO



- ① Gripper attachment
- ② Energy supply
- ③ Fixing for gripper finger
- ⑥ Integrated slot for magnetic field sensor
- ⑦ Fixing for mounting block
- ⑧ Fixing clamping bracket (KHA)
- ⑰ Air purge connection option
- ⑳ Adapter
- ㉑ Gripper
- A Air connection (close)
- B Air connection (open)
- A Air connection, alternative (close)
- B Air connection, alternative (open)



Hoseless air feed-through

N / S

