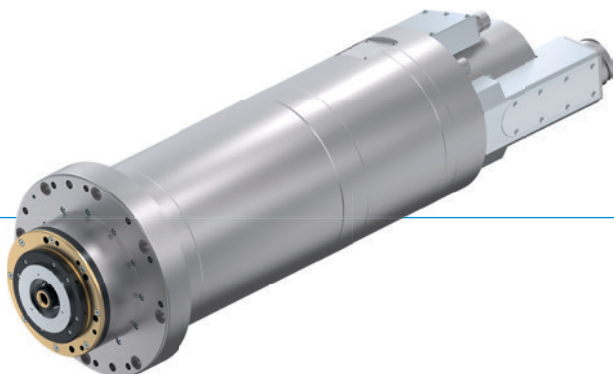


MOTOR SPINDLES

HF205-006-001

▶ PRODUCT ADVANTAGES



- ▶ **Rated power S1: 34 kW**
Rated torque S1: 83.7 Nm
Max. speed: 14,000 rpm
- ▶ Water cooling
- ▶ Hybrid bearings used for maximum performance
- ▶ Adapted for use in tooling machines
- ▶ Ideal for processing brass, aluminum, steel and cast iron

▶ EQUIPMENT FEATURES



Conus cleaning of tool fixation



Coolant through shaft



Labyrinth seal



Tool fixation monitoring



Purged air-seal



Automatic tool change



Vector controlled / feedback

▶ OPTIONS



Acceleration sensor

▶ ACCESSORIES

We would be glad to help you select and configure the right accessories.

▶ TECHNICAL DATA

▶ HF205-006-001

Three phase asynchron motor, 6-poles

Nominal output S1 [kW]	34.0
Rated torque S1 [Nm]	83.7
Nominal current S1 [A]	130.0
Nominal speed	3.880
Maximum speed	14,000
Tool interface	HSK-A63
Motor technology	Asynchronous
Number of poles	6
Release unit	Hydraulic
Cooling	Water
Weight [kg]	130

▶ Interface Diagram

	Interface
A	Tool unlocked
AZ	Tool clamping
E, F	Cooling system inlet and outlet
IKZ	Coolant through shaft
KR	Conus cleaning
SPL	Sealing air
XD1	Power and signal connector
XG2	Signal connector
XG3	Position and speed sensor

