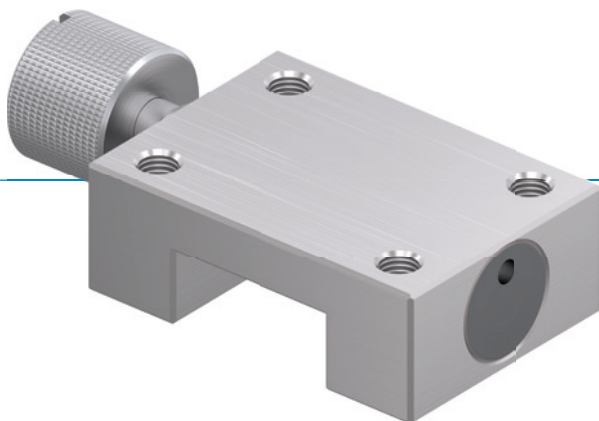


CLAMPING ELEMENTS | MANUAL

SERIES MINIHK

► PRODUCT ADVANTAGES



► **small construction**

For all common miniature profile rail guides

► **Tool-free opening and closing (bi-stable)**

By turning the knurled screw

► **Maintenance free**

Up to 50,000 static clamping cycles

► BENEFITS IN DETAIL

APPLICATION SCENARIOS

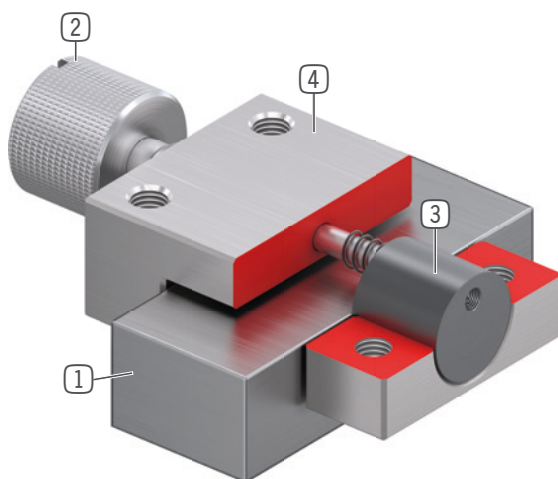
- **Assembly aids**
- **Optical equipment**
- **Medical equipment**

FURTHER INFORMATION

► **Spacer plate**

In addition, a spacer plate might have to be ordered as height compensation, depending on the height of the rail carriage (dimension D).

► INFORMATION ON THE SERIES



- ① **Miniature profile rail guide**
- Available for all common miniature profile rail guides
- ② **Stainless knurled screw**
- For opening and closing the clamping unit
- ③ **Clamping jaw**
- The floating bearings guarantee symmetrical application of force
- ④ **Housing**

► THE BEST PRODUCT FOR YOUR APPLICATION

► Technical data	
Series	MiniHK
Rail size	5-42 mm
Holding force	40-300 N
Clamping torque knurled screw	0,07-2,5 Nm
Spring storage	inexistent
B10d value	up to 50 000
Dynamic braking cycles	not suitable
Operation	manual
Operating temperature	-10 ... +70 [°C]