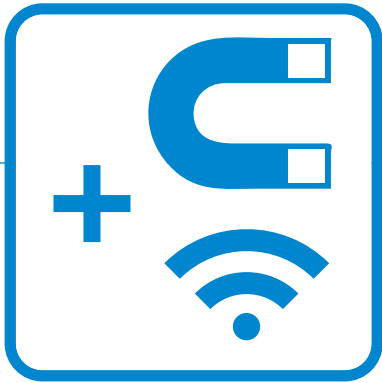


CLAMPING AND BRAKING ELEMENTS

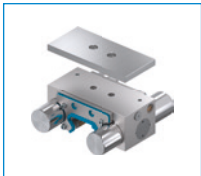
INDIVIDUALIZATION OF MAGNETIC FIELD SENSOR QUERY

► SPECIFICATIONS COMPARED TO STANDARD PRODUCT



- Sensor groove for direct status monitoring
- All standard magnetic field sensors can be used

► CUSTOMIZABLE SERIES



Series MBPS
Clamping and braking
element

► APPLICATION DESCRIPTION

- Brake elements with a spring mechanism are typically used as safety components to reliably hold the position and absorb the forces that occur in the event of an emergency stop or if there is no power supply.
- For a well-founded safety assessment, a direct status query such as via a magnetic field sensor is recommended.

► APPLICATION EXAMPLE

