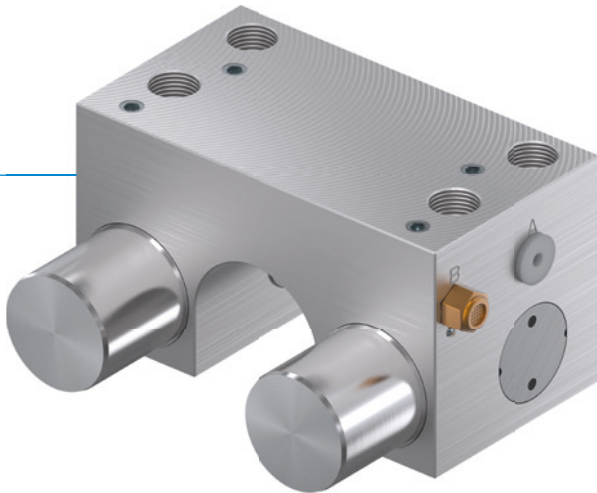


# CLAMPING ELEMENTS | PNEUMATIC SERIES MKRS

## ▶ PRODUCT ADVANTAGES



- ▶ **Independent of the manufacturer**  
For circular guides and shaft guides
- ▶ **Energize to open (NC)**  
through spring-loaded energy storage
- ▶ **high durability**  
Up to 5 million static clamping cycles
- ▶ **Safety element**  
Safe clamping in case of energy failure

## ▶ THE BEST PRODUCT FOR YOUR APPLICATION

### APPLICATION SCENARIOS

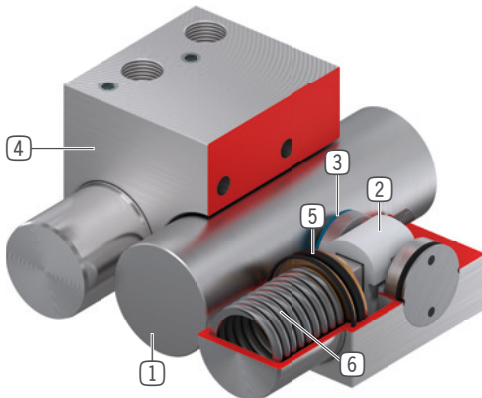
- ▶ **Clamping in case of pressure drop**
- ▶ **Clamping without energy requirement**

### FURTHER INFORMATION

- ▶ **Special variants on request, e.g.**
  - With proximity switch monitoring
  - With low opening pressure (3.0 bar)
  - With additional air connection (from above, from the front)
  - made of stainless steel

Series	▶ Technical data	
	MKRS	MKRS-LP
Shaft diameter	10-60 mm	10-60 mm
Holding force	350-1650 N	300-1350 N
Pressure min. / max.	5.5 / 6.5 [bar]	4 / 6.5 [bar]
Spring storage	existing	existing
PLUS connection	No	No
B10d value	up to 5 million	up to 5 million
Dynamic braking cycles	not suitable	not suitable
Operation	pneumatic	pneumatic
Operating temperature	-10 ... +70 [°C]	-10 ... +70 [°C]
Shaft tolerance	+/- 0,01 mm	+/- 0,01 mm
Hardness	min. 54 HRC	min. 54 HRC

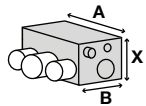
## ► BENEFITS IN DETAIL



- ① **Circular guide**
  - Compatible with circular and shaft guides
- ② **Wedge-type gear**
  - Power transmission between piston and clamping jaw
- ③ **Clamping jaw**
  - Pressed at the circular guide
- ④ **Housing**
- ⑤ **Pneumatic piston**
  - The piston moves the wedge-type gear longitudinally
- ⑥ **Spring-loaded energy storage**
  - For non-pressurized closing of the clamping unit

## ► TECHNICAL DATA

### ► SERIES MKRS CLAMPING NC (NORMALLY CLOSED) CLOSED WITHOUT PRESSURE



Order no.	Shaft Ø* [mm]	Holding force [N]	Holding torque [Nm]	A [mm]	B [mm]	X [mm]
MKRS1000A	10	350	2	50	56	16
MKRS1000A-LP	10	300	1	50	56	16
MKRS1200A	12	350	2	50	56	18
MKRS1200A-LP	12	300	1	50	56	18
MKRS1500A-A	15	400	3	54	56	22
MKRS1500A-LP-A	15	300	2	54	56	22
MKRS1600A	16	400	3	55	58	22
MKRS1600A-A	16	400	3	54	56	22
MKRS1600A-LP-A	16	300	2	54	56	22
MKRS2000A	20	600	6	66	60	25
MKRS2000A-LP	20	500	6	66	60	25
MKRS2500A	25	750	9	77	63	30
MKRS2500A-LP	25	650	8	77	63	30
MKRS3000A	30	1050	16	92	77.5	35
MKRS3000A-LP	30	850	12	92	77.5	35
MKRS3200A	32	1650	33	120	82	45
MKRS3200A-LP	32	1350	16	120	82	45
MKRS4000A	40	1650	34	120	82	45
MKRS4000A-LP	40	1350	27	120	82	45
MKRS5000A	50	1650	41	132	82	50
MKRS5000A-LP	50	1350	33	132	82	50
MKRS6000A	60	1650	49	142	82	50
MKRS6000A-LP	60	1350	40	142	82	50

\* Min. hardness of 54 HRC