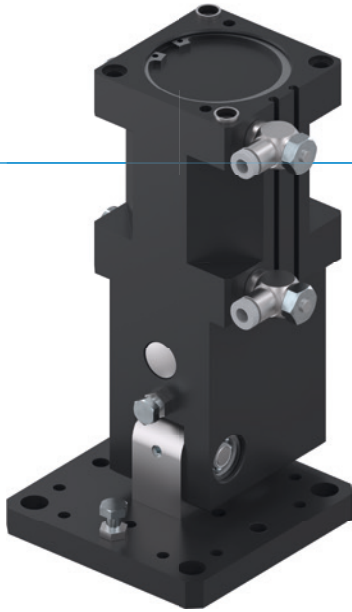


# ANGLE PIVOT UNITS

## SERIES SWM1000

### ▶ PRODUCT ADVANTAGES



#### “The slim”

##### ▶ Optimised design

Adjusted to a gantry axle, you can integrate the unit in your machine loading system to save space

##### ▶ Large locating flange

The large mounting surface simplifies your design and allows secure attachment of follow-on tools

##### ▶ Failure-free continuous operation

Our uncompromising “Made in Germany” quality guarantees up to 10 million maintenance-free cycles

### ▶ SERIES CHARACTERISTICS

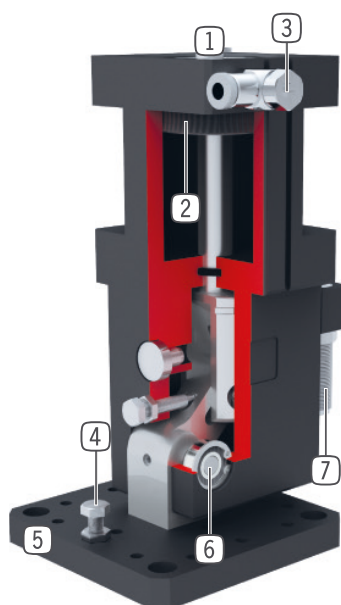
#### Installation size

#### SWM10XX

|  |   |
|--|---|
|  <b>10 million maintenance-free cycles (max.)</b> | ● |
|  <b>IP30</b>                                      | ● |
|  <b>Magnetic field sensor</b>                     | ● |
|  <b>Powerstop end position damping</b>            | ● |
|  <b>Positionability - 2 positions</b>             | ● |



## ► BENEFITS IN DETAIL



- ① **Mounting and positioning**
- ② **Drive**
  - double-acting pneumatic cylinder
- ③ **Air flow control valve**
  - for speed regulation
  - included in scope of delivery
- ④ **Adjustable end position**
  - +/- 3° adjustable end position
- ⑤ **Intake flange**
  - for connection to application-specific adapter plate (to be supplied by the customer)
- ⑥ **Force transfer 90° pivoting**
  - toggle lever principle
- ⑦ **Patented, hydraulic shock absorber**
  - adjustable end position damping

## ► TECHNICAL DATA

| Installation size | Swivel angle<br>[°] | Torque<br>[Nm] | Weight<br>[kg] | IP class |
|-------------------|---------------------|----------------|----------------|----------|
| SWM1035           | 90                  | 7 - 10         | 1              | IP30     |
| SWM1045           | 90                  | 14 - 21        | 1.2            | IP30     |
| SWM1054           | 90                  | 29 - 40        | 3.6            | IP30     |
| SWM1063           | 90                  | 39 - 64        | 3.5            | IP30     |
| SWM1080           | 90                  | 88 - 150       | 5.5            | IP30     |

## ► FURTHER INFORMATION IS AVAILABLE ONLINE

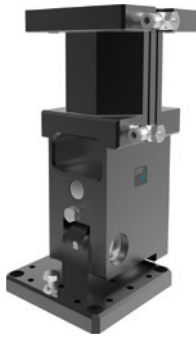


All information just a click away at: [www.zimmer-group.com](http://www.zimmer-group.com). Find data, illustrations, 3D models and operating instructions for your installation size using the order number for your desired product. Quick, clear and always up-to-date.

# ANGLE PIVOT UNITS

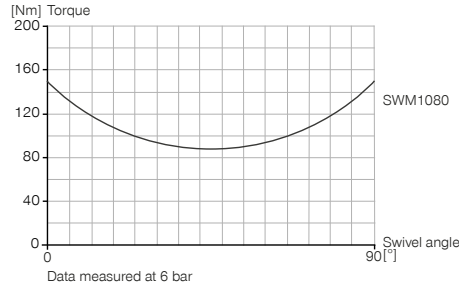
## INSTALLATION SIZE SWM1080

### ▶ PRODUCT SPECIFICATIONS



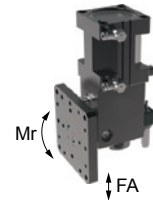
#### ▶ Moment of inertia

Shows the torque when lifting vs the swivel angle.



#### ▶ Forces and moments

Indicates the static load on the bearing.



|         |     |
|---------|-----|
| Fa [N]  | 880 |
| Mr [Nm] | 90  |

### ▶ INCLUDED IN DELIVERY



2 [piece]  
Flow Control Valves - with Swivel joint  
**DRV1-8X6**



2 [piece]  
Centering Disc  
**DST42000**

### ▶ RECOMMENDED ACCESSORIES



#### ENERGY SUPPLY



**DSV1-8**  
Pressure safety valve



**DSV1-8E**  
Pressure safety valve with quick exhaust



#### SENSORS



**MFS01-K-KHC-P1-PNP**  
Magnetic field sensor angled, cable 5 m



**MFS01-S-KHC-P1-PNP**  
Magnetic field sensor angled, cable 0.3 m - M8 connector



**MFS02-K-KHC-P1-PNP**  
Magnetic field sensor straight, cable 5 m



**MFS02-S-KHC-P1-PNP**  
Magnetic field sensor straight, cable 0.3 m - M8 connector



#### CONNECTIONS / OTHER



**ANS0085**  
Attachment Kit



**PHE14X10NHDE-A**  
Industrial shock absorbers PowerStop



**KAG500**  
Plug-in connector Straight Cable 5m - Socket M8 (female)



**KAW500**  
Plug-in connector Angled Cable 5m - Socket M8 (female)



**S8-G-3**  
Plug-in connector customizable Straight - Connector M8

| ► Technical data                       |                |
|--|----------------|
| <b>Order no.</b>                       | <b>SWM1080</b> |
| Swivel angle [°]                       | 90             |
| Swivel angle regulable +/- [°]         | 3              |
| Torque 0° [Nm]                         | 150            |
| Torque 45° [Nm]                        | 88             |
| Torque 90° [Nm]                        | 150            |
| Repetition accuracy +/- [°]            | 0.01           |
| Swivel time without extension load [s] | 0.9            |
| Operating pressure min. [bar]          | 3              |
| Operating pressure max. [bar]          | 8              |
| Nominal operating pressure [bar]       | 6              |
| Operating temperature min. [°C]        | 5              |
| Operating temperature max. [°C]        | +80            |
| Air volume per cycle [cm³]             | 700            |
| Protection to IEC 60529                | IP30           |
| Weight [kg]                            | 5.5            |

