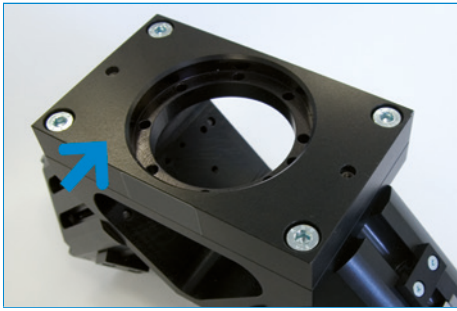


ANGLE FLANGE SERIES WFR



Flexible connection to your robot

The adapter plates are manufactured in accordance with EN ISO 9409-1 and therefore fit most robot types from a wide range of manufacturers.

Step 1: Select adapter plate

Simply determine the pitch circle diameter of the robot flange and you will receive the appropriate adapter plate.



Over 50 different variants

Adapter plate and angular flange can be combined with 13 different grippers - resulting in over 50 different variants. Select your suitable gripper from our main catalog. There you will find a wide variety of designs, with or without gripping force safety device, with different protection classes or temperature-resistant.

Step 2: Select angular flange

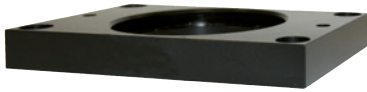
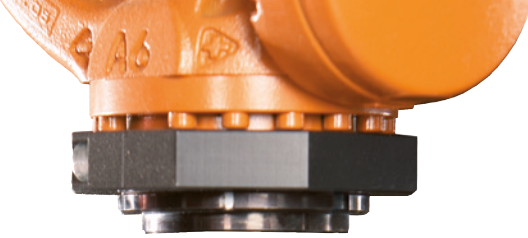
Select the gripper and this will result in the right angle flange.



Extend the functionality of your Angle flange

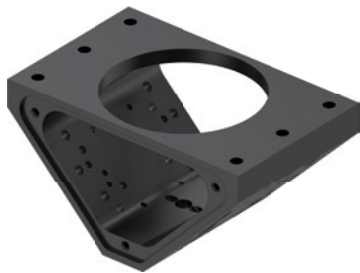
Cover plate, discharge nozzle or programming pins, with the extensive accessory, you can quickly and individually integrate additional functions.

3rd step: Select accessories



▶ STEP 1: ADAPTER PLATE

Order no.	▶ Technical Data			
	APR01	APR02	APR03	APR05
Connecting flange according EN ISO 9409-1	-	-	-	-
Certifications	LABS / REACH / RoHS	LABS / REACH / RoHS	LABS / REACH / RoHS	LABS / REACH / RoHS



▶ STEP 2: ANGLE FLANGE

Order no.	▶ Technical Data	
	WFR03	WFR04
Compatible with installation size	GPP5004 / GPP5006 / GEP5006 / GPD5004 / GPD5006 / GED5006	GPP5008 / GPP5010 / GEP5008 / GPD5008 / GPD5010 / GED5008 / GPW5008
Certifications	LABS / REACH / RoHS	LABS / REACH / RoHS



▶ STEP 3: ACCESSORIES

Order no.	▶ Technical Data	
	ABWFR01	ABWFR02
Design	cover plate	cover plate
Compatible with	WFR03	WFR04
Certifications	LABS / REACH / RoHS	LABS / REACH / RoHS



Order no.	DUWFR01
Design	Outlet nozzle
Compatible with	WFR03 / WFR04
Certifications	LABS / REACH / RoHS



Order no.	SPWFR01
Design	Programming tip
Compatible with	WFR03 / WFR04
Certifications	LABS / REACH / RoHS