

TOOL CHANGERS

SERIES WWR1000

▶ PRODUCT ADVANTAGES



▶ **Secure hold during pressure drop**

The combination of spring accumulator and mechanical force transmission ensures that the tool is held securely - even in the event of a sudden loss of pressure in the system.

▶ **High loads for major challenges**

With load capacities of over 1,000 kg, the tool changer is ideal for use on heavy-duty robots and enables stable, automated changing processes even under the most demanding conditions.

▶ **Inexhaustible variety of media transfer systems**

Whether pneumatics, vacuum, hydraulics, coolant, electrical signals or load - our modular system allows the integration of a wide variety of media carriers - flexibly adaptable to the most diverse process requirements.

▶ THE BEST PRODUCT FOR YOUR APPLICATION



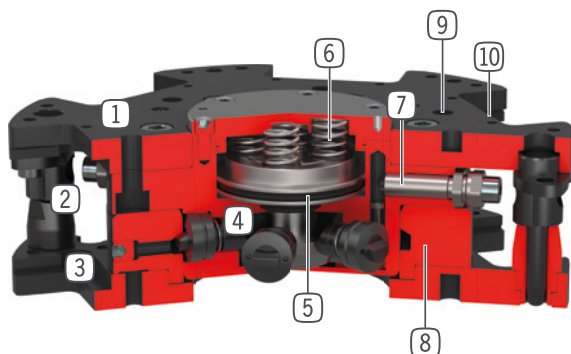
▶ **Our products welcome the challenge!**

Extreme conditions, all over the world—our tried and tested components and systems give you endless possibilities.

Find the best product for your specific use:

www.zimmer-group.com

► BENEFITS IN DETAIL



- 1 Fix part**
- For robot side assembly
- 2 Centering pins**
- twist protection and positioning for loose part
- 3 Loose part**
- For tool side assembly
- 4 Locking bolt**
- adapted to the clamping sleeve
- 5 Drive**
- double-acting pneumatic cylinder
- 6 Integrated spring**
- energy storage in case of drop in pressure
- 7 Piston position sensing**
- Via inductive proximity switch
- 8 Locking sleeve**
- 9 Robot flange**
- partial mounting circle in accordance with EN ISO 9409-1
- 1 0 Mounting for energy element**

► TECHNICAL DATA

	Connecting flange according EN ISO 9409-1	Electrical energy transfer	Fluid energy transfer
Installation size			
WWR1160	TK 160	optional	optional
WWR1200	TK 200	optional	optional

► FURTHER INFORMATION IS AVAILABLE ONLINE



All information just a click away at: www.zimmer-group.com. Find data, illustrations, 3D models and operating instructions for your installation size using the order number for your desired product. Quick, clear and always up-to-date.

TOOL CHANGERS

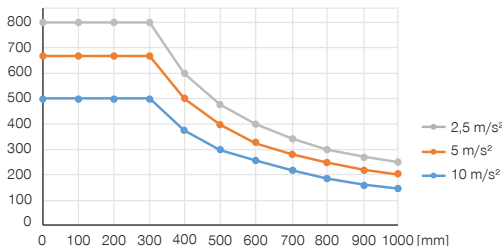
INSTALLATION SIZE WWR1160

▶ PRODUCT SPECIFICATIONS



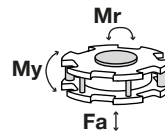
▶ Variable installation position

Shows the maximum handling weight depending on acceleration and lever arm. Does not replace the technical design.



▶ Forces and moments

Shows static forces and moments which may impact on the tool changer when locked.



Mr [Nm]	6000
My [Nm]	6000
Fa [N]	35000

▶ INCLUDED IN DELIVERY



2 [piece]
Mounting bracket for proximity switch
ZUB0014

▶ RECOMMENDED ACCESSORIES



ENERGY SUPPLY



GV1-8X8
Straight Fittings - Quick Connect Style



SENSORS



NJ8-E2S-17
Inductive proximity switch - Connector M8



CONNECTIONS / OTHER



Energy elements and accessories for tool changer



KAG500
Plug-in connector Straight Cable 5m - Socket M8 (female)

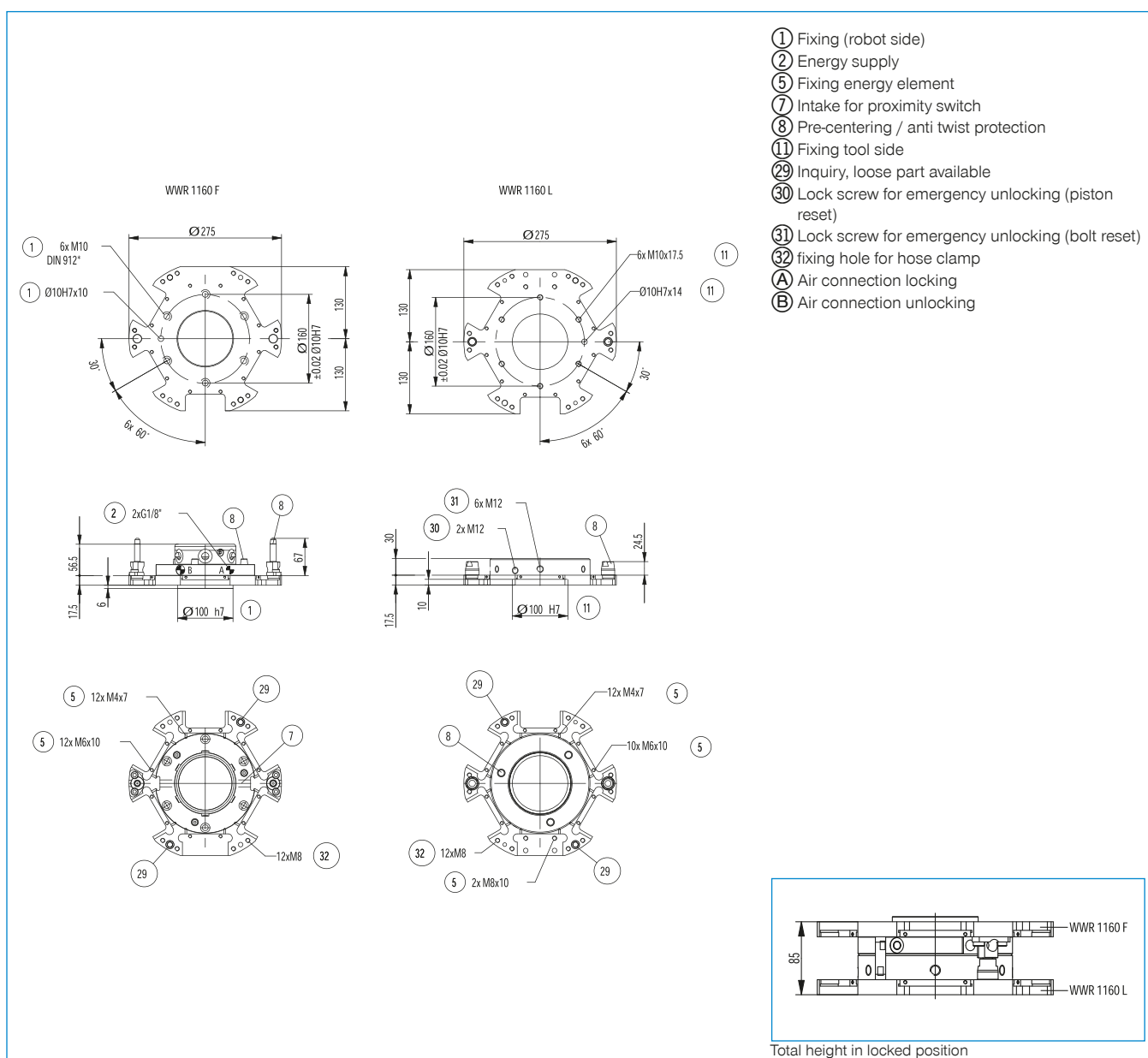


ZUB0022
Programming pins



ALSR1-1200
Storage station

Order no.	► Technical data	
	WWR1160F	WWR1160L
Connecting flange according EN ISO 9409-1	TK 160	TK 160
Electrical energy transfer	optional	optional
Fluid energy transfer	optional	optional
Self locking mechanism when locking	mechanical	mechanical
Locking stroke [mm]	1	
Repetition accuracy +/- [mm]	0.02	0.02
Offset at coupling max. in X,Y [mm]	3.0	3.0
Operating pressure [bar]	6 ... 8	6 ... 8
Nominal operating pressure [bar]	6	6
Operating temperature [°C]	5 ... +80	5 ... +80
Air volume per cycle [cm³]	48	
Weight [kg]	8.7	5.3



ENERGY ELEMENTS FOR TOOL CHANGER

SIZES WWR1160 / WWR1200

► CONNECTION DIAGRAM

