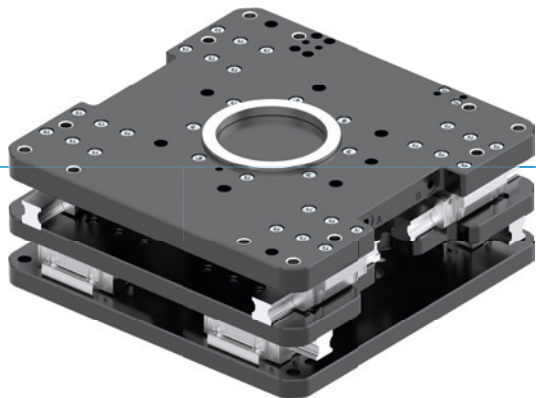


AXIS COMPENSATION MODULES

SERIES XYR9000

▶ PRODUCT ADVANTAGES



▶ Adjustable balancing force and stroke

Using adjustment screws, the properties of the axis compensation module can be optimally adapted to specific applications in a very short time.






▶ Robust design for maximum loads

The design reduces the moment load on your robot to a minimum and still ensures that processes run smoothly thanks to load capacities of up to 2,000 kg.

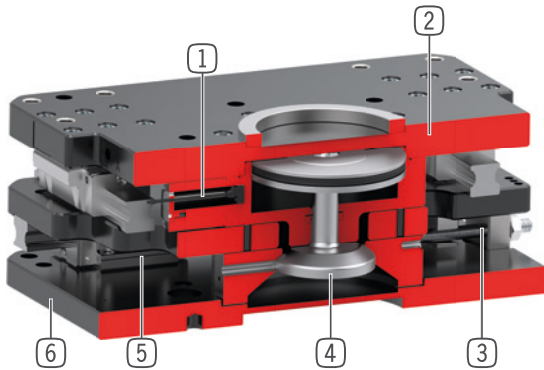
▶ Can be fixed in place centrally or de-centrally

Depending on the requirement, you can clamp centrally or lock the eccentric position. This significantly increases process reliability in tasks such as joining, assembly and handling.

▶ SERIES CHARACTERISTICS

Installation size	Version	
XYR9XXX	N-00	CL-00
 Position maintenance by means of clamping element		•
 1 million maintenance-free cycles (max.)	•	•
 Magnetic field sensor	•	•
 Protected against corrosion	•	•
 IP40	•	•

► BENEFITS IN DETAIL



- ① **Piston position sensing**
- With magnetic field or inductive sensor, available as optional accessories
- ② **Robust, lightweight housing**
- Low weight and low overall height thanks to parts made of hard-coated aluminum alloy
- ③ **Compensation stroke and compensation force**
- Adjustable for specific applications via adjustment screw
- ④ **Locking**
- Centrally via cone pistons with cylindrical section and with optional clamping elements for off-center clamping
- ⑤ **Linear guide**
- For maximum rigidity and for absorbing the highest forces and torques
- ⑥ **Compensation plate**
- to balance position errors in XY- direction

► TECHNICAL DATA

Installation size	Stroke X/Y level +/- [mm]	Retention force centred [N]	Weight [kg]	IP class
XYR9050	15.0	10000	37 - 40	IP40
XYR9075	15.0	10000	61 - 63	IP40
XYR9100	20.0	20000	89 - 93	IP40
XYR9150	20.0	20000	110 - 120	IP40
XYR9200	20.0	20000	140 - 150	IP40

► FURTHER INFORMATION IS AVAILABLE ONLINE



All information just a click away at: www.zimmer-group.com. Find data, illustrations, 3D models and operating instructions for your installation size using the order number for your desired product. Quick, clear and always up-to-date.

AXIS COMPENSATION MODULES

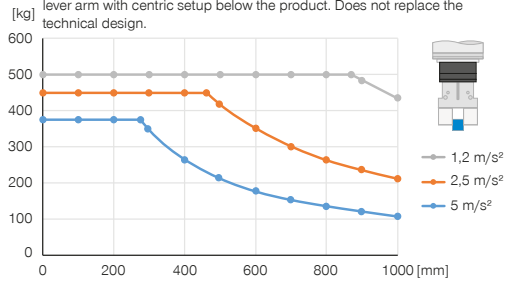
INSTALLATION SIZE XYR9050

▶ PRODUCT SPECIFICATIONS



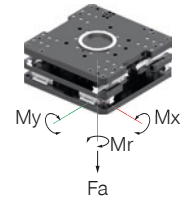
▶ Vertical design with centered holding force

Shows the maximum handling weight as a function of acceleration and lever arm with centric setup below the product. Does not replace the technical design.



▶ Forces and moments

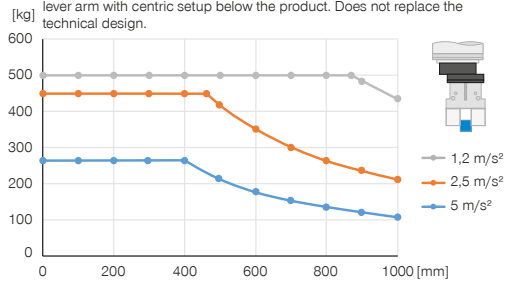
Shows static forces and moments



Mr [Nm]	1400
Mx [Nm]	1400
My [Nm]	1400
Fa [N]	15000

▶ Vertical design with decentered holding force

Shows the maximum handling weight as a function of acceleration and lever arm with centric setup below the product. Does not replace the technical design.



▶ INCLUDED IN DELIVERY (CL-00)



2 [piece]
Angled Fittings - Quick Connect Style
WVM5

▶ RECOMMENDED ACCESSORIES



SENSORS



ZUB188935
Alternate proximity bracket, M8



NJ8-E2S
Inductive proximity switch – M8



ZUB188937
Alternate proximity bracket, M12



NJ12-E2S
Inductive proximity switch, M12



SENSORS



ZUB197328
Query plunger (piston) for inductive proximity switch



ZUB198941
Piston position sensing with magnetic field sensor



CONNECTIONS / OTHER



ZUB188894
Equalizing force adjustment

