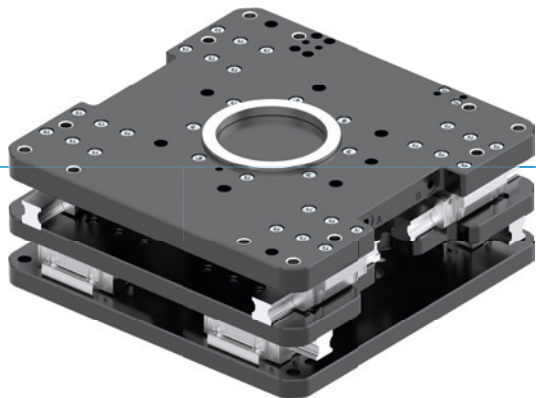


# AXIS COMPENSATION MODULES

## SERIES XYR9000

### ▶ PRODUCT ADVANTAGES



#### ▶ Adjustable balancing force and stroke

Using adjustment screws, the properties of the axis compensation module can be optimally adapted to specific applications in a very short time.






#### ▶ Robust design for maximum loads

The design reduces the moment load on your robot to a minimum and still ensures that processes run smoothly thanks to load capacities of up to 2,000 kg.

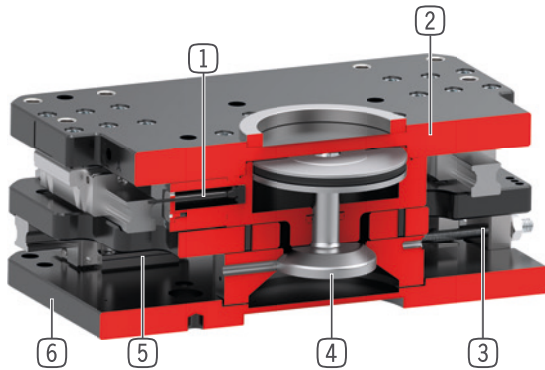
#### ▶ Can be fixed in place centrally or de-centrally

Depending on the requirement, you can clamp centrally or lock the eccentric position. This significantly increases process reliability in tasks such as joining, assembly and handling.

### ▶ SERIES CHARACTERISTICS

Installation size	Version	
XYR9XXX	N-00	CL-00
 Position maintenance by means of clamping element		•
 1 million maintenance-free cycles (max.)	•	•
 Magnetic field sensor	•	•
 Protected against corrosion	•	•
 IP40	•	•

## ► BENEFITS IN DETAIL



- ① **Piston position sensing**
  - With magnetic field or inductive sensor, available as optional accessories
- ② **Robust, lightweight housing**
  - Low weight and low overall height thanks to parts made of hard-coated aluminum alloy
- ③ **Compensation stroke and compensation force**
  - Adjustable for specific applications via adjustment screw
- ④ **Locking**
  - Centrally via cone pistons with cylindrical section and with optional clamping elements for off-center clamping
- ⑤ **Linear guide**
  - For maximum rigidity and for absorbing the highest forces and torques
- ⑥ **Compensation plate**
  - to balance position errors in XY- direction

## ► TECHNICAL DATA

Installation size	Stroke X/Y level +/- [mm]	Retention force centred [N]	Weight [kg]	IP class
<b>XYR9050</b>	15.0	10000	37 - 40	IP40
<b>XYR9075</b>	15.0	10000	61 - 63	IP40
<b>XYR9100</b>	20.0	20000	89 - 93	IP40
<b>XYR9150</b>	20.0	20000	110 - 120	IP40
<b>XYR9200</b>	20.0	20000	140 - 150	IP40

## ► FURTHER INFORMATION IS AVAILABLE ONLINE



All information just a click away at: [www.zimmer-group.com](http://www.zimmer-group.com). Find data, illustrations, 3D models and operating instructions for your installation size using the order number for your desired product. Quick, clear and always up-to-date.

# AXIS COMPENSATION MODULES

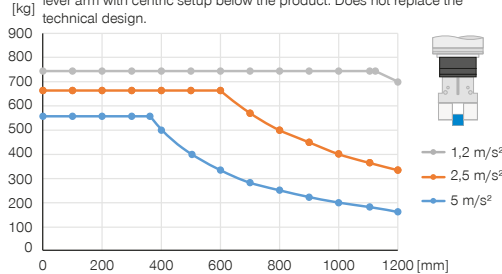
## INSTALLATION SIZE XYR9075

### ▶ PRODUCT SPECIFICATIONS



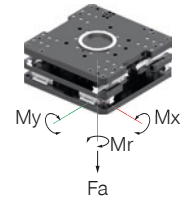
#### ▶ Vertical design with centered holding force

Shows the maximum handling weight as a function of acceleration and lever arm with centric setup below the product. Does not replace the technical design.



#### ▶ Forces and moments

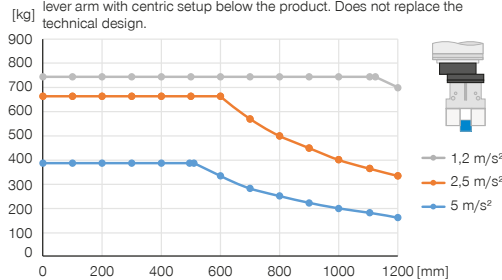
Shows static forces and moments



Mr [Nm]	1700
Mx [Nm]	1700
My [Nm]	1700
Fa [N]	15000

#### ▶ Vertical design with decentered holding force

Shows the maximum handling weight as a function of acceleration and lever arm with centric setup below the product. Does not replace the technical design.



### ▶ INCLUDED IN DELIVERY (CL-00)



2 [piece]  
Angled Fittings - Quick Connect Style  
**WVM5**

### ▶ RECOMMENDED ACCESSORIES

#### SENSORS



**ZUB188935**  
Alternate proximity bracket, M8



**NJ8-E2S**  
Inductive proximity switch – M8



**ZUB188937**  
Alternate proximity bracket, M12



**NJ12-E2S**  
Inductive proximity switch, M12

#### SENSORS



**ZUB202445**  
Query plunger (piston) for inductive proximity switch



**ZUB202075**  
Piston position sensing with magnetic field sensor

#### CONNECTIONS / OTHER



**ZUB188894**  
Equalizing force adjustment

Order no.	► Technical data	
	XYR9075N-00-A	XYR9075CL-00-A
Stroke X/Y level +/- [mm]*	15.0	15.0
Retention force centred [N]	10000	10000
Retention force decentred [N]		3500
Return force [N]	3000	3000
Repetition accuracy +/- [mm]	0.05	0.05
Operating pressure [bar]	4 ... 8	5.5 ... 6.5
Nominal operating pressure [bar]	6	6
Operating temperature [°C]	5 ... +80	5 ... +80
Air volume per cycle centred [cm <sup>3</sup> ]	600	600
Moment of inertia around the Z-axis [kgm <sup>2</sup> ]	2.7	2.8
Certifications	LABS / REACH / RoHS	LABS / REACH / RoHS
Protection to IEC 60529	IP40	IP40
Weight [kg]	61	64

\* Combined stroke in X/Y plane, see operating instructions for further information

