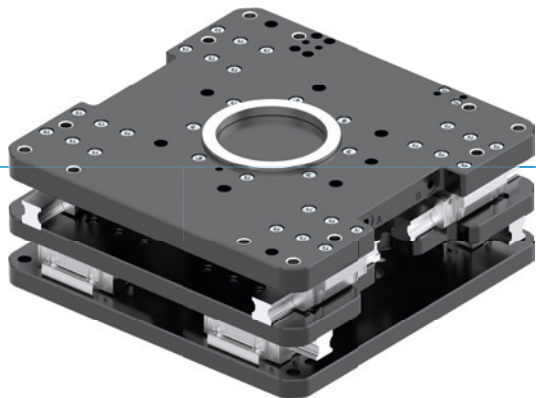


AXIS COMPENSATION MODULES

SERIES XYR9000

▶ PRODUCT ADVANTAGES



▶ Adjustable balancing force and stroke

Using adjustment screws, the properties of the axis compensation module can be optimally adapted to specific applications in a very short time.






▶ Robust design for maximum loads

The design reduces the moment load on your robot to a minimum and still ensures that processes run smoothly thanks to load capacities of up to 2,000 kg.

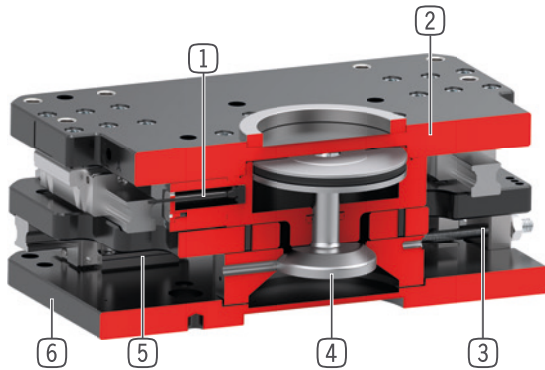
▶ Can be fixed in place centrally or de-centrally

Depending on the requirement, you can clamp centrally or lock the eccentric position. This significantly increases process reliability in tasks such as joining, assembly and handling.

▶ SERIES CHARACTERISTICS

Installation size	Version	
XYR9XXX	N-00	CL-00
 Position maintenance by means of clamping element		•
 1 million maintenance-free cycles (max.)	•	•
 Magnetic field sensor	•	•
 Protected against corrosion	•	•
 IP 40	•	•

► BENEFITS IN DETAIL



- ① **Piston position sensing**
 - With magnetic field or inductive sensor, available as optional accessories
- ② **Robust, lightweight housing**
 - Low weight and low overall height thanks to parts made of hard-coated aluminum alloy
- ③ **Compensation stroke and compensation force**
 - Adjustable for specific applications via adjustment screw
- ④ **Locking**
 - Centrally via cone pistons with cylindrical section and with optional clamping elements for off-center clamping
- ⑤ **Linear guide**
 - For maximum rigidity and for absorbing the highest forces and torques
- ⑥ **Compensation plate**
 - to balance position errors in XY- direction

► TECHNICAL DATA

Installation size	Stroke X/Y level +/- [mm]	Retention force centred [N]	Weight [kg]	IP class
XYR9050	15.0	10000	37 - 40	IP40
XYR9075	15.0	10000	61 - 63	IP40
XYR9100	20.0	20000	89 - 93	IP40
XYR9150	20.0	20000	110 - 120	IP40
XYR9200	20.0	20000	140 - 150	IP40

► FURTHER INFORMATION IS AVAILABLE ONLINE



All information just a click away at: www.zimmer-group.com. Find data, illustrations, 3D models and operating instructions for your installation size using the order number for your desired product. Quick, clear and always up-to-date.

AXIS COMPENSATION MODULES

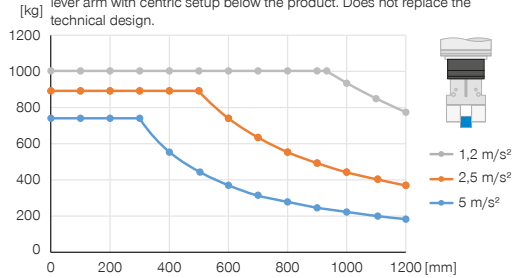
INSTALLATION SIZE XYR9100

▶ PRODUCT SPECIFICATIONS



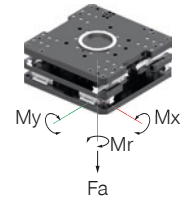
▶ Vertical design with centered holding force

Shows the maximum handling weight as a function of acceleration and lever arm with centric setup below the product. Does not replace the technical design.



▶ Forces and moments

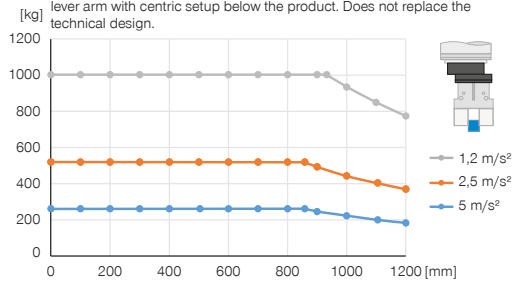
Shows static forces and moments



Mr [Nm]	3000
Mx [Nm]	4000
My [Nm]	4000
Fa [N]	30000

▶ Vertical design with decentered holding force

Shows the maximum handling weight as a function of acceleration and lever arm with centric setup below the product. Does not replace the technical design.



▶ INCLUDED IN DELIVERY (CL-00)



2 [piece]
Angled Fittings - Quick Connect Style
WVM5

▶ RECOMMENDED ACCESSORIES



SENSORS



ZUB188935
Alternate proximity bracket, M8



NJ8-E2S
Inductive proximity switch – M8



ZUB188937
Alternate proximity bracket, M12



NJ12-E2S
Inductive proximity switch, M12



SENSORS



ZUB196503
Query plunger (piston) for inductive proximity switch



ZUB202075
Piston position sensing with magnetic field sensor



CONNECTIONS / OTHER



ZUB192591
Equalizing force adjustment

Order no.	► Technical data	
	XYR9100N-00-A	XYR9100CL-00-A
Stroke X/Y level +/- [mm]*	20.0	20.0
Retention force centred [N]	20000	20000
Retention force decentred [N]		3500
Return force [N]	4700	4700
Repetition accuracy +/- [mm]	0.05	0.05
Operating pressure [bar]	4 ... 8	5.5 ... 6.5
Nominal operating pressure [bar]	6	6
Operating temperature [°C]	5 ... +80	5 ... +80
Air volume per cycle centred [cm ³]	1030	1030
Moment of inertia around the Z-axis [kgm ²]	4.1	4.2
Certifications	LABS / REACH / RoHS	LABS / REACH / RoHS
Protection to IEC 60529	IP40	IP40
Weight [kg]	89	92

* Combined stroke in X/Y plane, see operating instructions for further information

