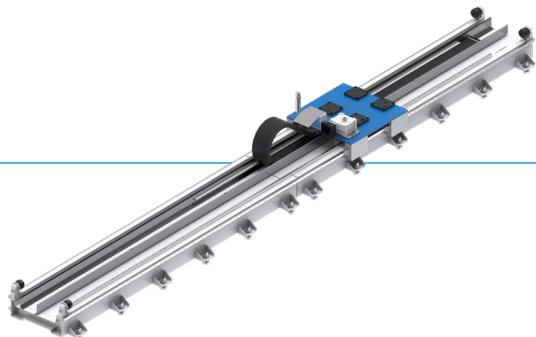


ROBOT TRANSFER AXIS

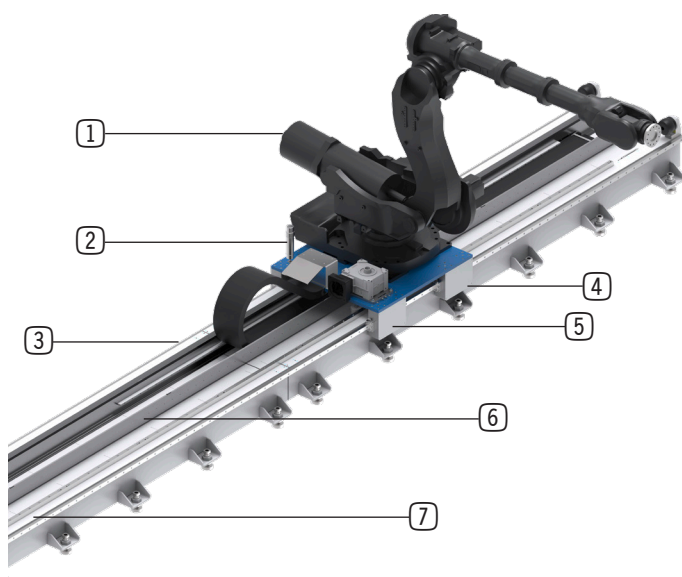
INSTALLATION SIZE ZRM 2500

▶ PRODUCT ADVANTAGES



- ▶ **Robust**
20% higher torque load than the benchmark
- ▶ **Flexible**
Thanks to configurable stroke and many options
- ▶ **Durable**
Longest service life on the market
- ▶ **Customized**
Adaptable to any application

▶ BENEFITS IN DETAIL



- ① **Free choice of robots**
 - Free choice of robot and drive motor
- ② **Sensor-monitored lubrication system**
 - Permanent lubrication for a long service life
- ③ **Energy chain**
 - Configurable position (right, center, left)
- ④ **Optional clamping**
 - High rigidity due to clamping of the carriage position
- ⑤ **High load capacity**
 - Four load capacities for a maximum robot weight of 250 kg, 1,000 kg, 1,500 kg and 2,500 kg.
- ⑥ **Optional cover for the travel path**
 - Protection from environmental influences
- ⑦ **Configurable total length**
 - Standard lengths can be freely combined with each other or customized (stroke in steps of 1,000 m)

► TECHNICAL DATA ON INSTALLATION SIZES

Installation size	Max. load capacity [kg]	Min./max. total length [mm]	Positioning accuracy [mm]	Max. acceleration [m/s ²]	Max. speed [m/s]
ZRM 250	250	2,000... 100,000	+/- 0.05	4	1.6
ZRM 1000	1,000	2,000... 100,000	+/- 0.05	4	1.6
ZRM 1500	1,500	3,500... 100,000	+/- 0.05	4	1.5
ZRM 2500	2,500	3,500... 100,000	+/- 0.05	3	1.5

► OPTIONS ON REQUEST

► Robot connection

Customization of the robot mounting hole pattern and its alignment

► Carriage

Second carriage for operating two robots on one axis

► Stroke length

Standardized extension modules can be configured as required

► Drive

Siemens servo motor or prepared for a specific motor

► Energy chain position

As an alternative to the energy chain placed on the left side, there is the option of centered or on the right side

► Energy chain version

In addition to the open energy chain, a closed one can be selected

► Floor mounting

Bolted to the floor, (as an option) welded to the floor or mounted on a platform

► Lubrication

Can be lubricated with a lubricator, central lubrication or manually

► Color

Customizable on request

► Further configuration options

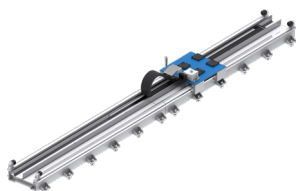
Sensors for end position monitoring and clamping element for securing the carriage position

► CHECKLIST



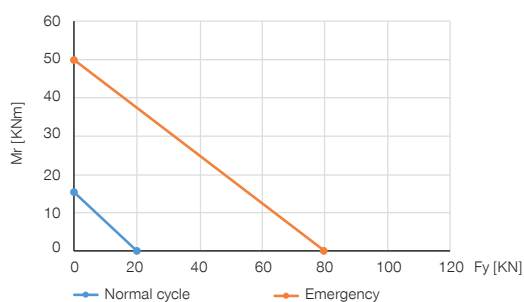
Use the checklists on our website to find the right product for your application:
www.zimmer-group.com/en-us/service-contact/pre-sales/technical-advice

▶ PRODUCT SPECIFICATIONS



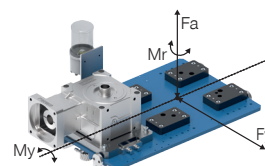
▶ Load diagram

Shows the maximum static payload



▶ Forces and torques

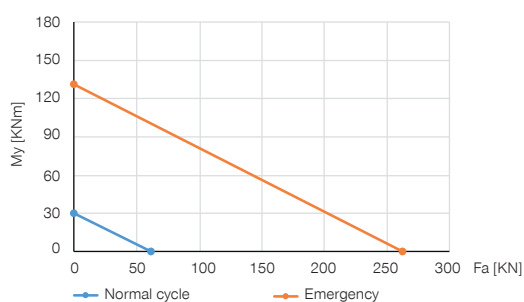
Displays static forces and torques.



My [kN/m]	30
Mr [kN/m]	15
Fa [kN]	52
Fy [kN]	20

▶ Load diagram

Shows the maximum static payload

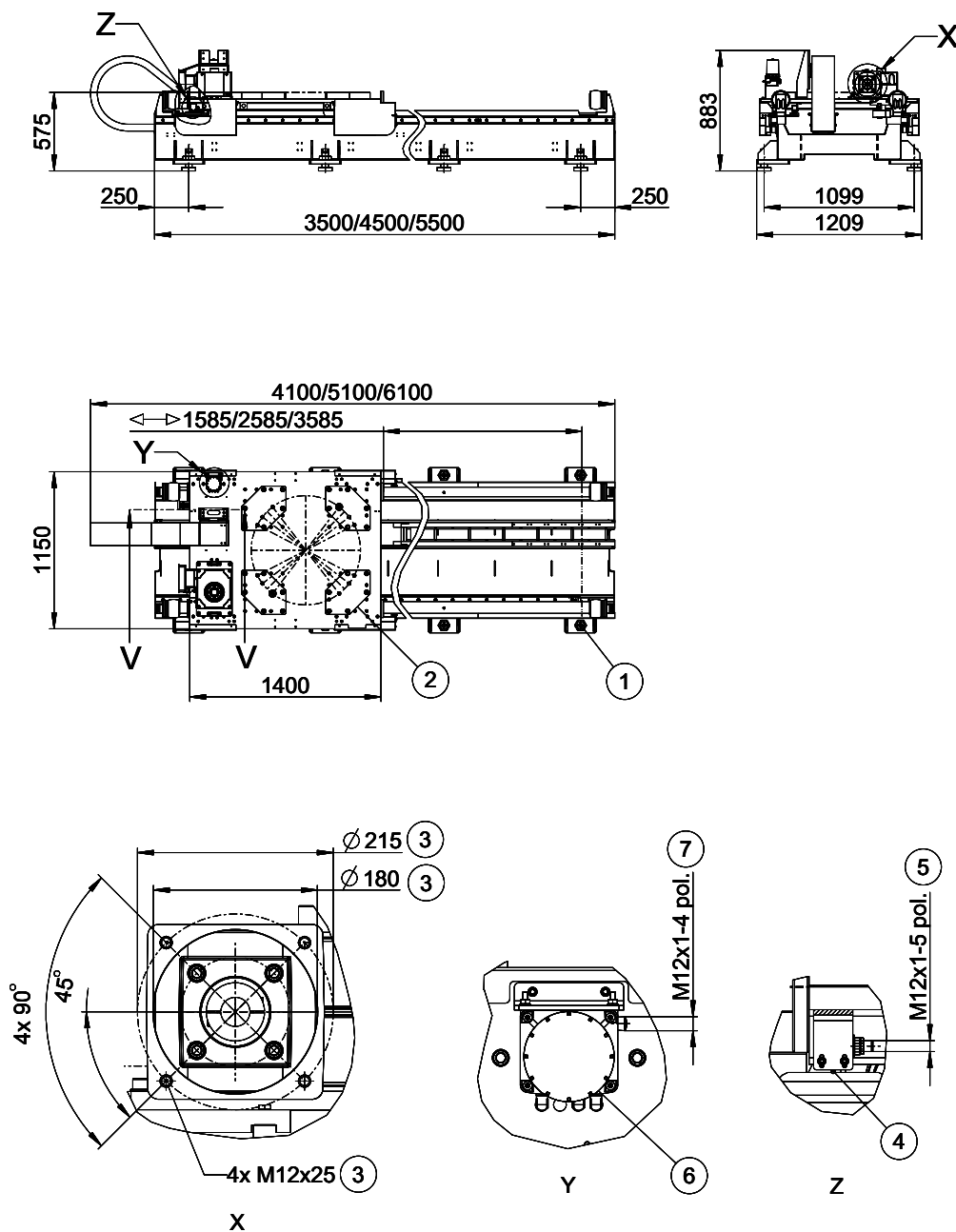


▶ TECHNICAL DATA

▶ Technical data

	ZRM194054-A	ZRM194041-A	ZRM192889-A
Number of trolleys	1	1	1
Max. load per trolley [kg]	2.500	2.500	2.500
Stroke Trolley 1 [mm]	1.585	2.585	3.585
Rail length [mm]	3.500	4.500	5.500
Overall length of the axle with energy chain [mm]	4.100	5.100	6.100
Max. acceleration [m/s ²]	3	3	3
Max. speed [m/s]	1,5	1,5	1,5
Gear ratio	1:6.75	1:6.75	1:6.75
Positioning repeatability +/- [mm]	0,05	0,05	0,05
Arrangement of the energy chain	center	center	center
Lubrication	automatically	automatically	automatically
Operating temperature [°C]	5 ... +40	5 ... +40	5 ... +40
Floor mounting Height compensation +/- [mm]	20	20	20
Weight [kg]	1.800	2.100	2.400

► TECHNICAL DRAWING



- ① Product attachment
- ② Robot attachment
- ③ Motor attachment
- ④ Limit switch
- ⑤ Energy supply for limit switch
- ⑥ Lubrication system for rack and pinion
- ⑦ Energy supply for lubrication system