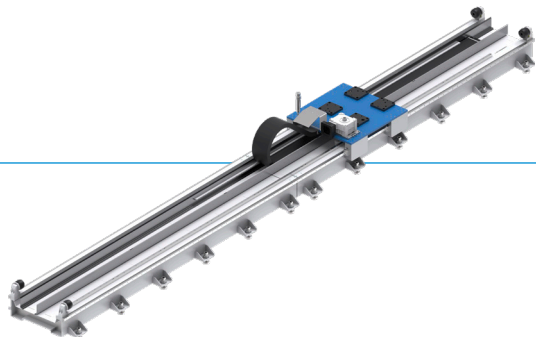


ROBOT TRANSFER AXIS

INSTALLATION SIZE ZRM 250

▶ PRODUCT ADVANTAGES



▶ **Robust**

20% higher torque load than the benchmark

▶ **Flexible**

Thanks to configurable stroke and many options

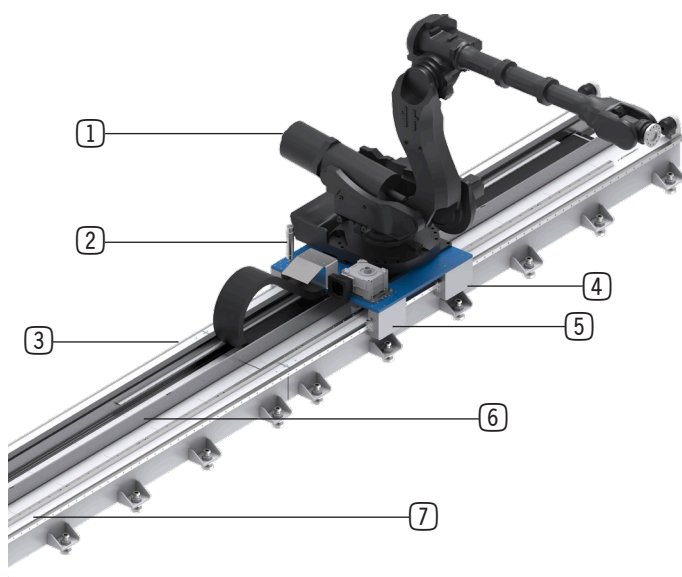
▶ **Durable**

Longest service life on the market

▶ **Customized**

Adaptable to any application

▶ BENEFITS IN DETAIL



① **Free choice of robots**

- Free choice of robot and drive motor

② **Sensor-monitored lubrication system**

- Permanent lubrication for a long service life

③ **Energy chain**

- Configurable position (right, center, left)

④ **Optional clamping**

- High rigidity due to clamping of the carriage position

⑤ **High load capacity**

- Four load capacities for a maximum robot weight of 250 kg, 1,000 kg, 1,500 kg and 2,500 kg.

⑥ **Optional cover for the travel path**

- Protection from environmental influences

⑦ **Configurable total length**

- Standard lengths can be freely combined with each other or customized (stroke in steps of 1,000 m)

► TECHNICAL DATA ON INSTALLATION SIZES

Installation size	Max. load capacity [kg]	Min./max. total length [mm]	Positioning accuracy [mm]	Max. acceleration [m/s ²]	Max. speed [m/s]
ZRM 250	250	2,000... 100,000	+/- 0.05	4	1.6
ZRM 1000	1,000	2,000... 100,000	+/- 0.05	4	1.6
ZRM 1500	1,500	3,500... 100,000	+/- 0.05	4	1.5
ZRM 2500	2,500	3,500... 100,000	+/- 0.05	3	1.5

► OPTIONS ON REQUEST

► Robot connection

Customization of the robot mounting hole pattern and its alignment

► Carriage

Second carriage for operating two robots on one axis

► Stroke length

Standardized extension modules can be configured as required

► Drive

Siemens servo motor or prepared for a specific motor

► Energy chain position

As an alternative to the energy chain placed on the left side, there is the option of centered or on the right side

► Energy chain version

In addition to the open energy chain, a closed one can be selected

► Floor mounting

Bolted to the floor, (as an option) welded to the floor or mounted on a platform

► Lubrication

Can be lubricated with a lubricator, central lubrication or manually

► Color

Customizable on request

► Further configuration options

Sensors for end position monitoring and clamping element for securing the carriage position

► CHECKLIST



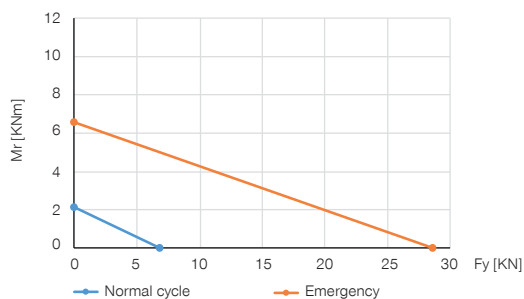
Use the checklists on our website to find the right product for your application:
www.zimmer-group.com/en-us/service-contact/pre-sales/technical-advice

► PRODUCT SPECIFICATIONS



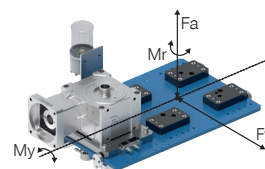
► Load diagram

Shows the maximum static payload



► Forces and torques

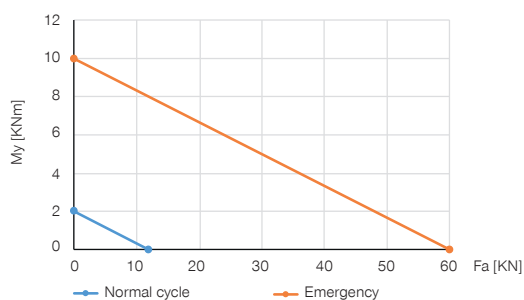
Displays static forces and torques.



My [kN/m]	2
Mr [kN/m]	2
Fa [kN]	12
Fy [kN]	7

► Load diagram

Shows the maximum static payload

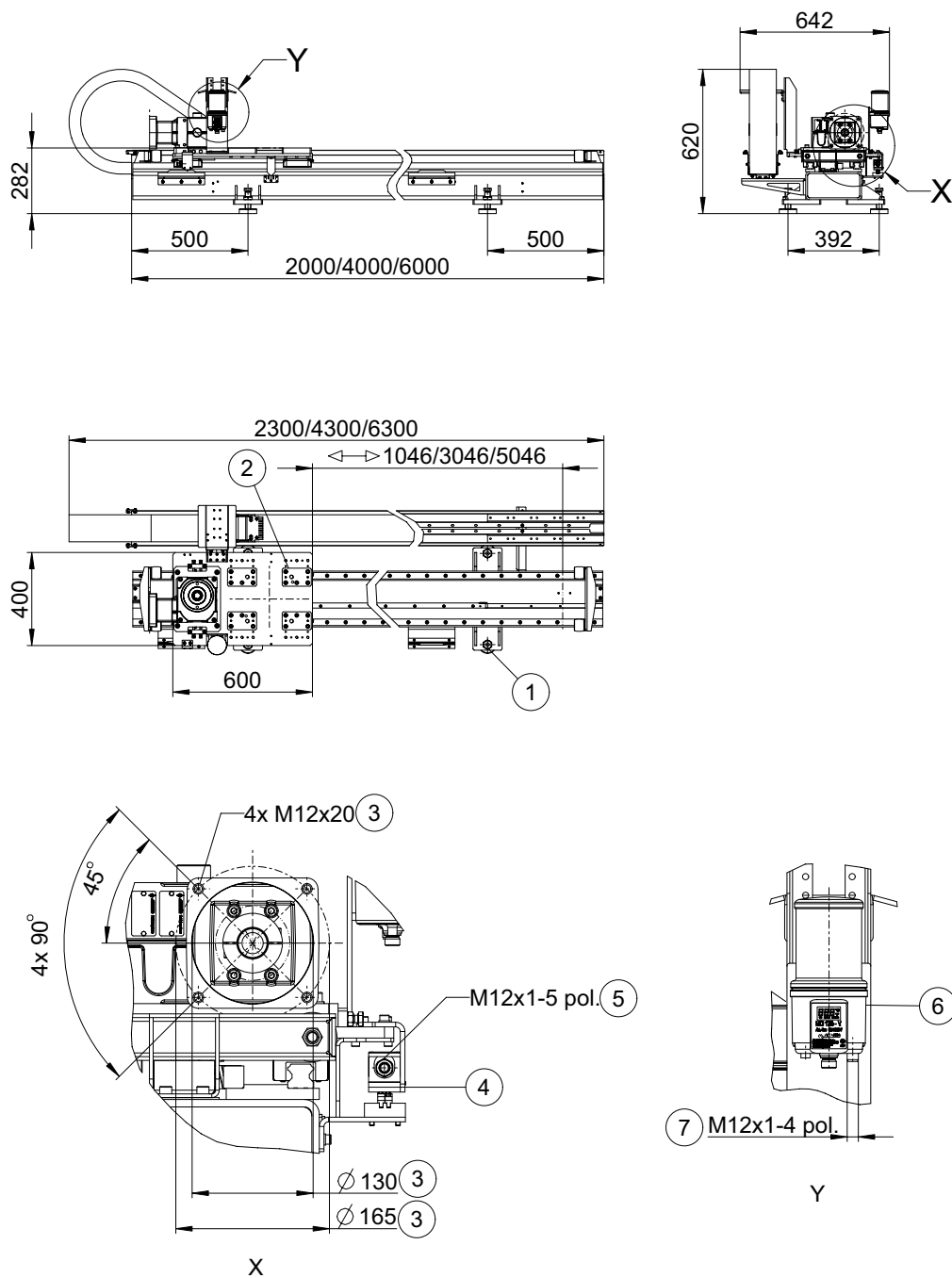


► TECHNICAL DATA

► Technical data

	ZRM194865-A	ZRM194864-A	ZRM194863-A
Number of trolleys	1	1	1
Max. load per trolley [kg]	250	250	250
Stroke Trolley 1 [mm]	1.046	3.046	5.046
Rail length [mm]	2.000	4.000	6.000
Overall length of the axle with energy chain [mm]	2.300	4.300	6.300
Max. acceleration [m/s ²]	4	4	4
Max. speed [m/s]	1,5	1,5	1,5
Gear ratio	1:4.75	1:4.75	1:4.75
Positioning repeatability +/- [mm]	0,05	0,05	0,05
Arrangement of the energy chain	right	right	right
Lubrication	automatically	automatically	automatically
Operating temperature [°C]	5 ... +40	5 ... +40	5 ... +40
Floor mounting Height compensation +/- [mm]	20	20	20
Weight [kg]	270	450	630

► TECHNICAL DRAWING



- ① Product attachment
- ② Robot attachment
- ③ Motor attachment
- ④ Limit switch
- ⑤ Energy supply for limit switch
- ⑥ Lubrication system for rack and pinion
- ⑦ Energy supply for lubrication system